

RoHS COMPLIANT

Material:

Contact: brass

Insulator material : Nylon66 UL 94V-0

Applicable PC board thickness :1.6mm

$A=2.0 \times \text{No. of circuit} / 2 - 2.0$

$B=2.0 \times \text{No. of circuits} / 2 + 1.9$

$2020P^{**}V^{*}0^{*}$
 $\frac{1}{1} \frac{2}{2} \frac{3}{3}$

1. No. of circuits

2. Plating

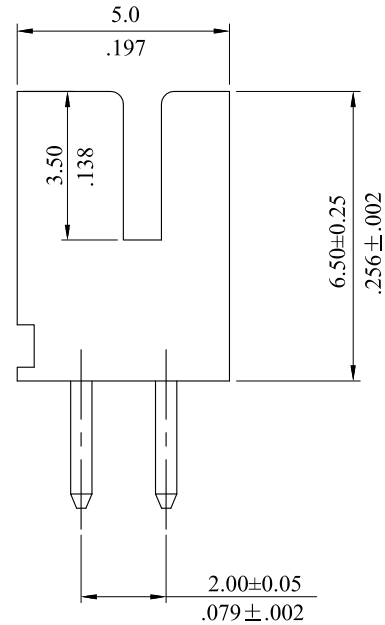
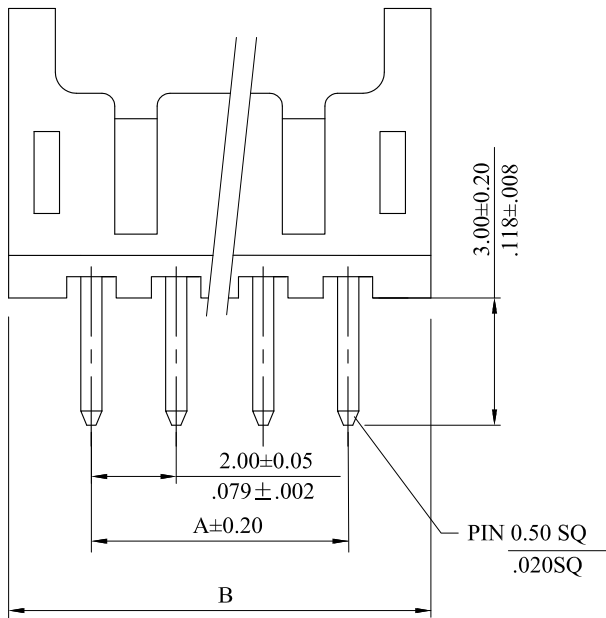
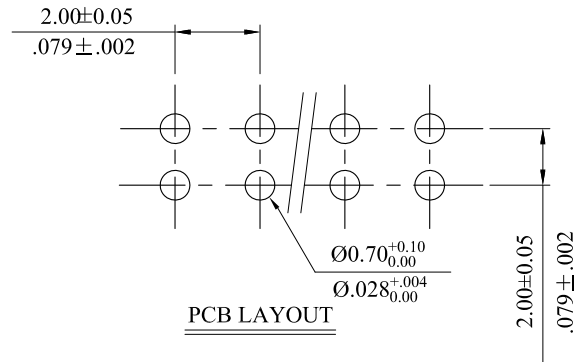
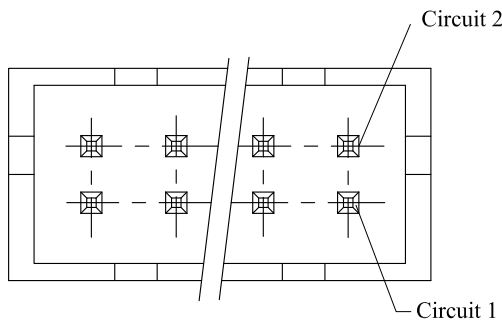
0 = Tin plated 120u"min. over 30u"min. nickel overall

U = Gold flash over 30u"min. nickel overall

3. Color

1=Black 3=Red 5=Yellow 7=Blue 0=Natural

POLES	DIMENSION.	
	A	B
4	2.00(.079)	5.90±0.20(.232±.008)
6	4.00(.157)	7.90±0.20(.311±.008)
8	6.00(.236)	9.90±0.20(.390±.008)
10	8.00(.315)	11.90±0.20(.469±.008)
12	10.00(.394)	13.90±0.25(.547±.010)
14	12.00(.472)	15.90±0.25(.626±.010)
16	14.00(.551)	17.90±0.25(.705±.010)
18	16.00(.630)	19.90±0.25(.783±.010)
20	18.00(.709)	21.90±0.25(.862±.010)
22	20.00(.787)	23.90±0.25(.941±.010)
24	22.00(.866)	25.90±0.25(1.020±.010)
26	24.00(.945)	27.90±0.25(1.098±.010)
28	26.00(1.024)	29.90±0.25(1.177±.010)
30	28.00(1.102)	31.9±0.30(1.256±.012)
32	30.00(1.181)	33.9±0.30(1.335±.012)
34	32.00(1.260)	35.9±0.30(1.413±.012)



E	ES111207			LEOCO CORPORATION	APPROVED:	BRADY				PART NO.:	2020P**V*0*				
D	ES101222				GENERAL TOLERANCES: (UNLESS SPECIFIED)	DATE:					TITLE:	2.00mm PITCH 180° WAFER			
C	ES080874			mm		inch	CHECKED:	CHARD				DRAWING NO.:	202004S		
B	ES071133			1 PLACE	± 0.30	± --	DATE:					SCALE	SIZE	SHEET	REV.
A	DWG REL			2 PLACES	± 0.20	± .012	DRAWN:	SAM				5:1	A4	1/1	E
REV.	ECO. NO.	CHG.	APP.	3 PLACES	± 0.10	± .008	DATE:	2011.12.12							
				4 PLACES	± --	± .004									
				ANGULAR ± (1°)											