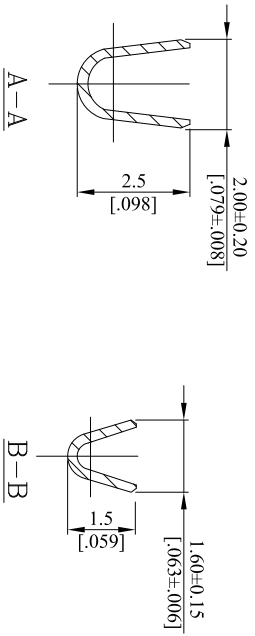
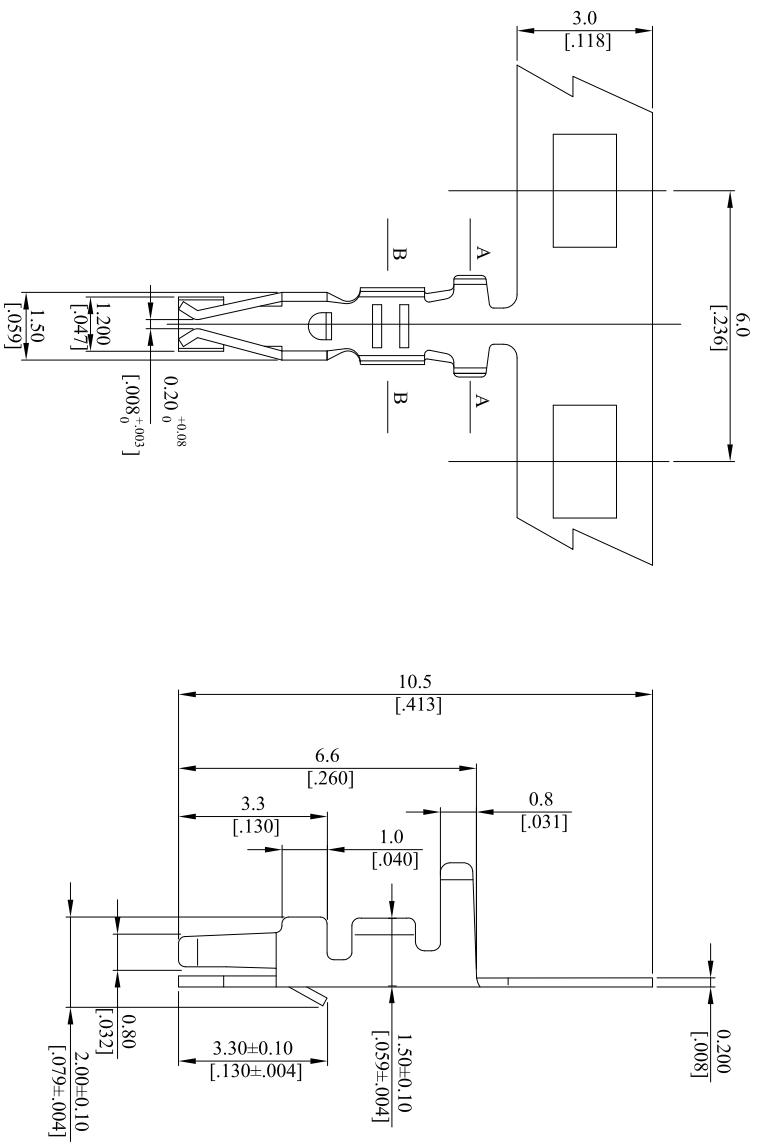


CUSTOMER DRAWING			
REV/	ECO. NO.	DESCRIPTION	DATE
B	ES031115		
C	ES101008		
D	ES101014		
E	ES101222		
F	ES160738	CHANGE DIMENSIONS	2016.7.28

Note:
 Material: Phosphor bronze/Tin plating
 Applicable wires: AWG 20~28

General part number:
 2020TPB 0 000

1. Plating:
 0= Tin plated 120µ" min. over 30µ" min. Nickel underplating overall



TOLERANCE UNLESS OTHERWISE SPECIFIED		LEOCO CORPORATION	
mm	[inch]	mm	inch
1 PLACES	± 0.30	± 0.30	± .012
2 PLACES	± 0.20	± 0.20	± .008
3 PLACES	± 0.10	± 0.10	± .004
4 PLACES	± --	± --	± .004

ANGULAR ±1°

APPROVED BY:	DATE:	TITLE:
Chard	2016.7.28	Crimping Terminal
CHECKED BY:	DATE:	
Angle	2016.7.28	
DRAWN BY:	DATE:	PART NO.:
Tess	2016.7.28	2020TPB0000
SIZE:	SCALE:	DRAWING NO.:
A3	1:1	202002S
		REV.:
		F
		SHEET:
		1 OF 1