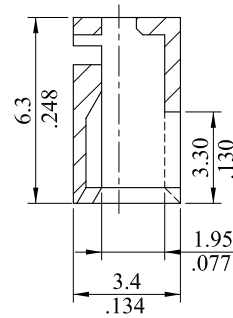
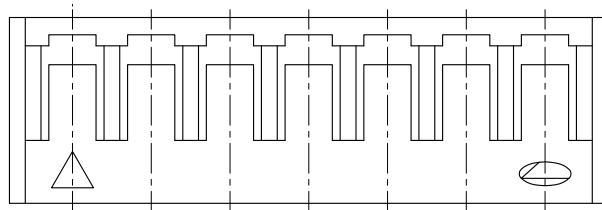
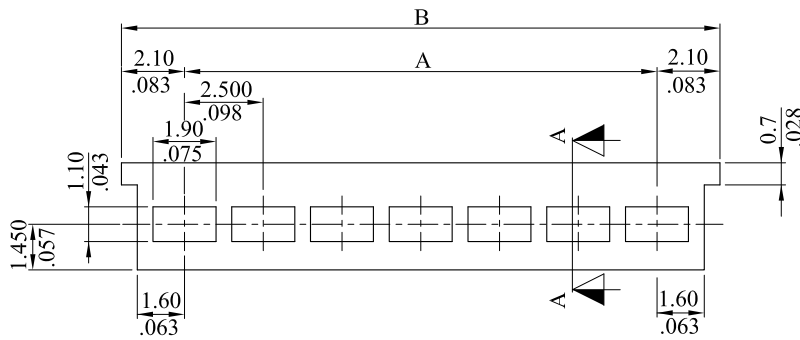
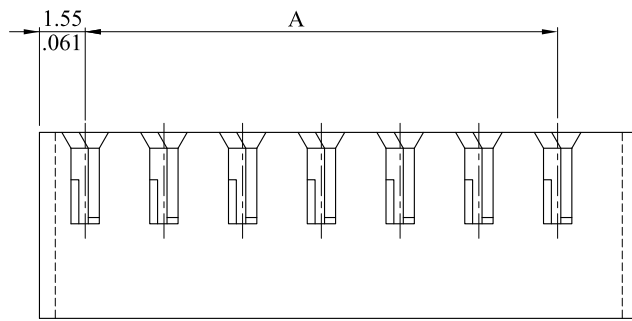


*** 2512 SERIES ***

MATERIAL: UL 94V-0 NYLON 6/6

RoHS COMPLIANT



SECTION A-A

20	47.50(1.870)	51.7(2.035)			
19	45.00(1.772)	49.2(1.937)	10	22.50(.886)	26.7(1.051)
18	42.50(1.673)	46.7(1.839)	9	20.000(.787)	24.2(.953)
17	40.00(1.575)	44.2(1.740)	8	17.500(.689)	21.7(.854)
16	37.50(1.476)	41.7(1.642)	7	15.000(.591)	19.2(.756)
15	35.00(1.378)	39.2(1.543)	6	12.500(.492)	16.7(.657)
14	32.50(1.280)	36.7(1.445)	5	10.000(.394)	14.2(.559)
13	30.00(1.181)	34.2(1.346)	4	7.500(.295)	11.7(.461)
12	27.50(1.083)	31.7(1.248)	3	5.000(.197)	9.2(.362)
11	25.00(.984)	29.2(1.150)	2	2.500(.098)	6.7(.264)
CIRCUITS	DIM.A.	DIM.B.	CIRCUITS	DIM.A.	DIM.B.

				leoco LEOCO CORPORATION		APPROVED:		PART NO.:																		
				GENERAL TOLERANCES: (UNLESS SPECIFIED)		DATE:		2512S**0000																		
						CHECKED:		TITLE:																		
				<table border="1" style="margin-left: auto; margin-right: auto;"> <thead> <tr> <th></th> <th>mm</th> <th>inch</th> </tr> </thead> <tbody> <tr> <td>1 PLACE</td> <td>± 0.30</td> <td>± --</td> </tr> <tr> <td>2 PLACES</td> <td>± 0.20</td> <td>± .012</td> </tr> <tr> <td>3 PLACES</td> <td>± 0.10</td> <td>± .008</td> </tr> <tr> <td>4 PLACES</td> <td>± --</td> <td>± .004</td> </tr> </tbody> </table>			mm	inch	1 PLACE	± 0.30	± --	2 PLACES	± 0.20	± .012	3 PLACES	± 0.10	± .008	4 PLACES	± --	± .004	DATE:		DRAWING NO.:			
	mm	inch																								
1 PLACE	± 0.30	± --																								
2 PLACES	± 0.20	± .012																								
3 PLACES	± 0.10	± .008																								
4 PLACES	± --	± .004																								
				ANGULAR ± (1°)		DRAWN:		251204S																		
						DATE:																				
REV.	ECO. NO.	CHG.	APP.			UNITS	SCALE	SIZE	SHEET	REV.																
						mm inch	4:1	A4	1/1	D																