

RoHS COMPLIANT

CUSTOMER DRAWING

REV.	ECO. NO.	
E	ES070658	
F	ES090738	
G	ES101242	
H	ES120704	
I	ES121222	
J	ES170105	Material: PBT → PA6T

Material:
 Insulator: PA6T, UL94V-0,Black
 Contact: Brass

General Part Number:
 2556P ** * * 00
 1 2 3

1.No.of circuits(1~40)

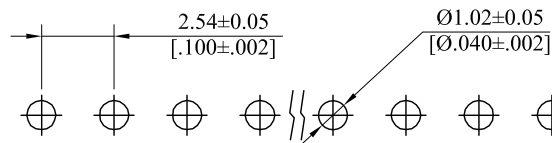
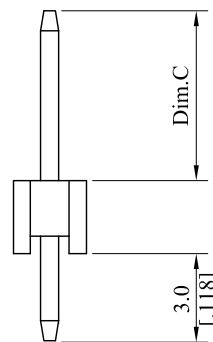
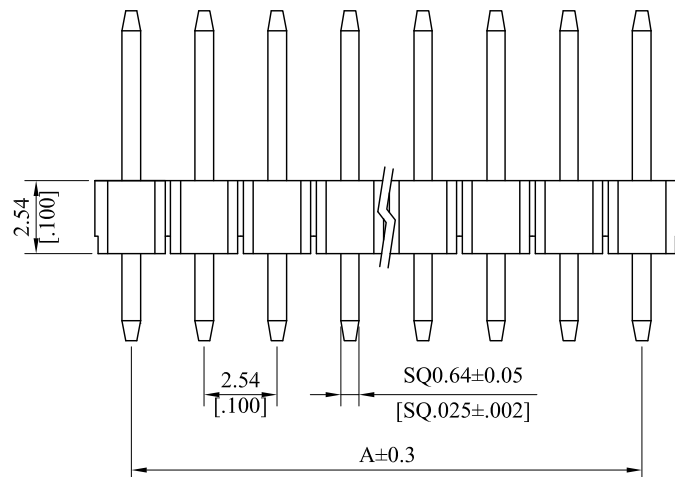
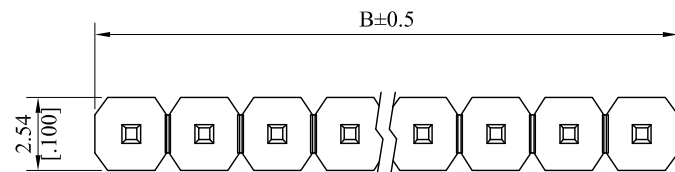
2.Plating

- T= Tin plated 120u"min. over 30u" min. Nickel underplating overall
- M= Matte Tin plated 80u"min. over 30u" min. Nickel underplating overall
- U= Gold flash over 30u" min. Nickel underplating overall
- W= 15u" min. Gold over 30u" min. Nickel underplating overall
- Z= 30u" min. Gold over 30u" min. Nickel underplating overall
- F= Selective Gold flash on contact area over 30μ" min. Nickel underplating overall, Tin plated on solder tails
- J= 15μ" min. Selective Gold on contact area over 30μ" min. Nickel underplating overall, Tin plated on solder tails
- K= 30μ" min. Selective Gold on contact area over 30μ" min. Nickel underplating overall, Tin plated on solder tails

3. Pin Length options:

- A: Dim.C=6.26mm B: Dim.C=7.26mm C: Dim.C=8.86mm
- D: Dim.C=5.86mm I: Dim.C=4.40mm J: Dim.C=16.00mm

A=2.54mm *No.of spaces
 B=A+2.54mm



P.C.B LAYOUT

TOLERANCE UNLESS OTHERWISE SPECIFIED			LEOCO CORPORATION <i>http://www.leoco.com.tw</i>		
mm	mm	inch	APPROVED BY:	DATE:	TITLE:
[inch]			Chard	2016.12.15	2.54 Pitch Pin Header
			CHECKED BY:	DATE:	
1 PLACE	± 0.30	± ---	Angel	2016.12.15	PART NO.: 2556P****00
2 PLACES	± 0.20	± .012	Spring	2016.12.15	
3 PLACES	± 0.10	± .008			DRAWING NO.: 255636S REV.: J SHEET: 1 OF 1
4 PLACES	± ---	± .004			
ANGULAR ±1°			SIZE: A3	SCALE: 1:1	