

*** 3941 V Series ***

Material :

* Insulator : UL 94V-0 Nylon 6/6

* Contact : Brass

* Plating : Tin plated 120μ " min over 30μ " min. nickel overall

RoHS COMPLIANT

Ordering Information:

3941P *** 000
1 2

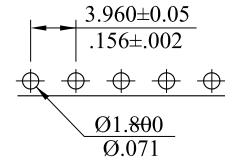
1. No. of circuits

2. Pin options:

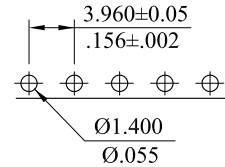
V=Square pin

R=Round pin

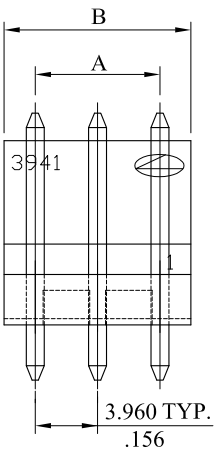
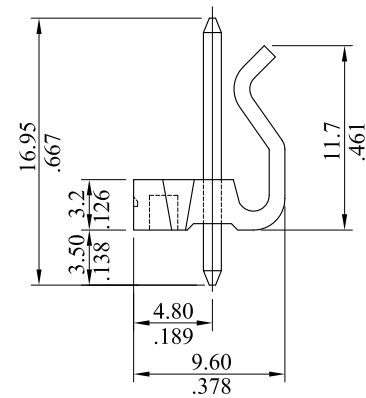
For square pin



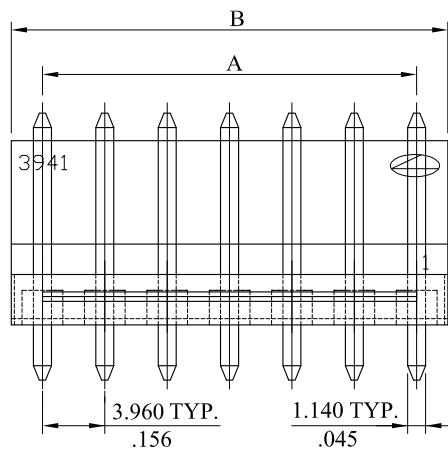
For round pin



Recommended Hole Pattern



2 through 3 circuits



4 through 20 circuits

Circuits	Part No.	Dimension	
		A	B
2	3941P02*000	3.96±0.15(.156±.006)	7.9±0.30(.311±.012)
3	3941P03*000	7.920±0.15(.312±.006)	11.9±0.30(.469±0.12)
4	3941P04*000	11.88±0.20(.468±.008)	15.8±0.30(.622±.012)
5	3941P05*000	15.84±0.20(.624±.008)	19.8±0.30(.780±.012)
6	3941P06*000	19.80±0.20(.780±.008)	23.8±0.30(.937±.012)
7	3941P07*000	23.76±0.20(.936±.008)	27.7±0.30(1.091±.012)
8	3941P08*000	27.72±0.20(1.092±.008)	31.7±0.30(1.248±.012)
9	3941P09*000	31.68±0.20(1.248±.008)	35.6±0.30(1.402±.012)
10	3941P10*000	35.64±0.30(1.403±.012)	39.6±0.40(1.559±.016)
11	3941P11*000	39.60±0.30(1.560±.012)	43.6±0.40(1.717±.016)
12	3941P12*000	43.56±0.30(1.716±.012)	47.5±0.40(1.870±.016)
13	3941P13*000	47.52±0.30(1.871±.012)	51.5±0.40(2.028±.016)
14	3941P14*000	51.48±0.30(2.027±.012)	55.4±0.40(2.181±.016)
15	3941P15*000	55.44±0.30(2.183±.012)	59.4±0.40(2.339±.016)
16	3941P16*000	59.40±0.30(2.339±.012)	63.4±0.40(2.496±.016)
17	3941P17*000	63.36±0.30(2.494±.012)	67.3±0.40(2.650±.016)
18	3941P18*000	67.32±0.30(2.650±.012)	71.3±0.40(2.807±.016)
19	3941P19*000	71.28±0.30(2.806±.012)	75.2±0.40(2.961±.016)
20	3941P20*000	75.24±0.30(2.962±.012)	79.2±0.40(3.118±.016)

F	ES101227			<p>LECO CORPORATION</p> <p>GENERAL TOLERANCES: (UNLESS SPECIFIED)</p> <table border="1"> <thead> <tr> <th></th> <th>mm</th> <th>inch</th> </tr> </thead> <tbody> <tr> <td>1 PLACE</td> <td>± 0.30</td> <td>± --</td> </tr> <tr> <td>2 PLACES</td> <td>± 0.20</td> <td>± .012</td> </tr> <tr> <td>3 PLACES</td> <td>± 0.10</td> <td>± .008</td> </tr> <tr> <td>4 PLACES</td> <td>± --</td> <td>± .004</td> </tr> </tbody> </table> <p>ANGULAR ± (1°)</p>		mm	inch	1 PLACE	± 0.30	± --	2 PLACES	± 0.20	± .012	3 PLACES	± 0.10	± .008	4 PLACES	± --	± .004	APPROVED:	PART NO.:			
	mm	inch																						
1 PLACE	± 0.30	± --																						
2 PLACES	± 0.20	± .012																						
3 PLACES	± 0.10	± .008																						
4 PLACES	± --	± .004																						
E	ES091235			DATE:	3941P***000																			
D	ES080803			CHECKED:	TITLE:																			
C	ES020431			DATE:	HEADER																			
A	DWG REL			DRAWN:	DRAWING NO.:																			
REV.	ECO. NO.	CHG.	APP.	DATE:	394105S																			
					UNITS	SCALE	SIZE	SHEET	REV.															
					mm inch	2:1	A4	1/1	F															