

Material: Phosphor Bronze

Accepts wire range: AWG #16 ~ #26

RoHS COMPLIANT

6742TPB * 000
1

1.Plating:

O=Tin plated 120μ " min over 30μ " min. nickel overall

F=Selective gold flash on contact area over 30μ" min. nickel overall,

Tin plated on solder or other area

J=15μ"min. Selective gold on contact area over 30μ" min.nickel overall,

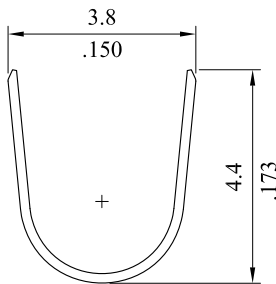
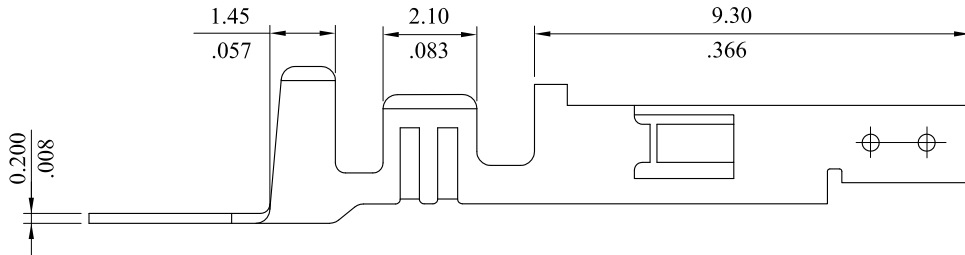
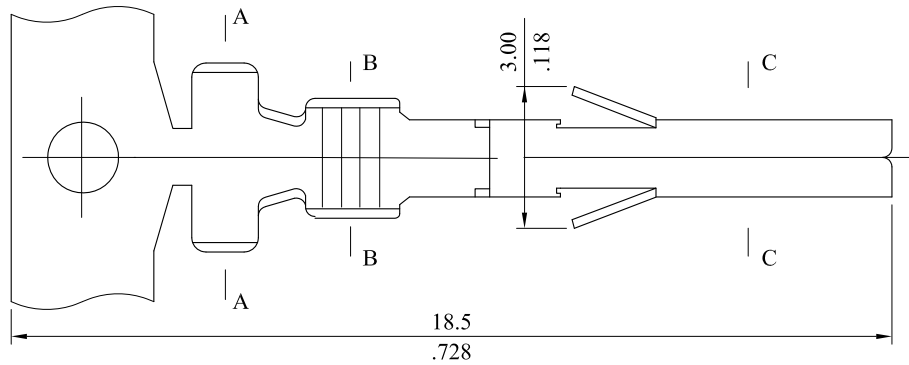
Tin plated on solder or other area

K=30μ"min.Selective gold on contact area over 30μ" min. nickel overall,

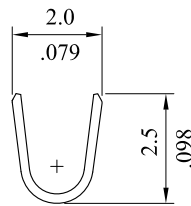
Tin plated on solder or other area

W= 15μ "min. gold over 30μ " min. nickel overall

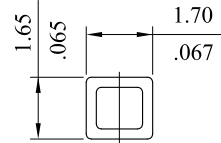
U=Gold flash(1~3μ") over 30μ "min. nickel overall



SEC A-A



SEC B-B



SEC C-C

				leoco LEOCO CORPORATION		APPROVED:		PART NO.:									
				GENERAL TOLERANCES: (UNLESS SPECIFIED)		DATE:		6742TPB*000									
D	ES101211					CHECKED:		TITLE:									
						DATE:		Crimp Terminal									
C	ES060745					DRAWN:		DRAWING NO.:									
B	ES060741					DATE:		674204S									
A	DWG REL							UNITS		SCALE		SIZE		SHEET		REV.	
REV.	ECO. NO.	CHG.	APP.	ANGULAR ± (1°)				mm inch		6:1		A4		1/1		D	