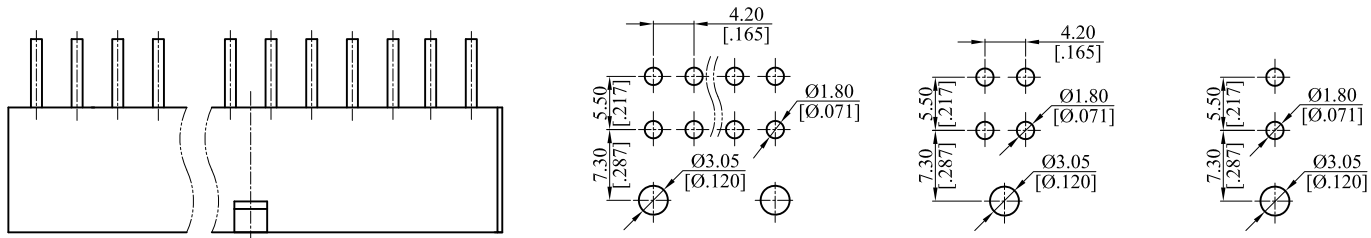


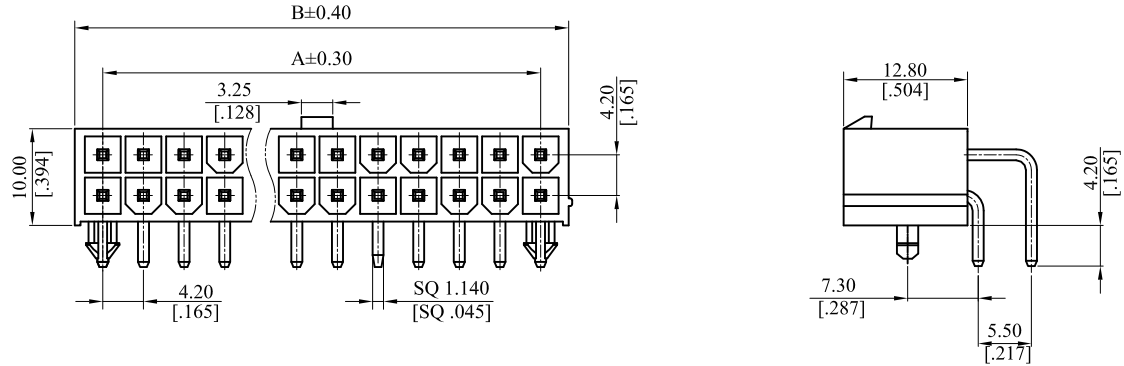
RoHS COMPLIANT

CUSTOMER DRAWING			
REV.	ECO. NO.	DESCRIPTION	DATE
A	DWG. REL.	APPROVED	2018.02.08
B	ES190411	B-6 Modify the plating code "T" to "0"	2019.04.24



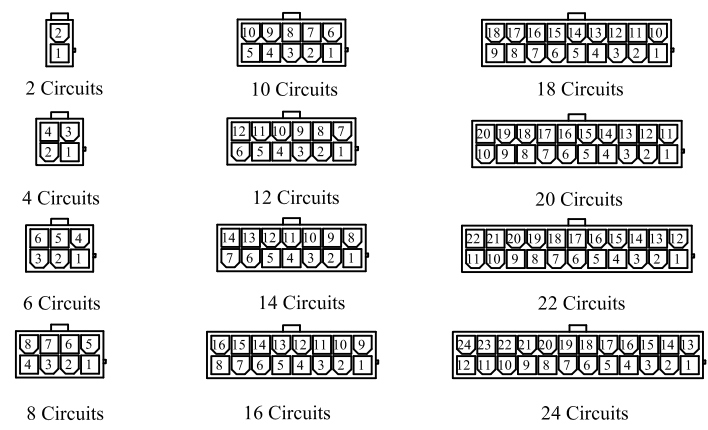
For 06~24 circuit      For 4 circuit      For 2 circuit

Recommended P.C.B Layout  
General Tolerance ±0.05



Note:  
Material:  
Insulator: Thermoplastic  
Contact: Brass  
  
General part number:  
6745P \*\* H \* 0 \*  
1 2 3  
1. No. of circuits(02~24)  
2. Plating:  
0=Tin plated 120µ" min. over 30µ" min. Nickel underplating overall.  
U=Gold flash over 30µ" min. Nickel underplating overall .  
W=15µ" min. Gold over 30µ" min. Nickel underplating overall  
Z=30µ" min. Gold over 30µ" min. Nickel underplating overall  
3. Options:  
E=UL94V-2, without screw hole and with mounting pegs, Nature  
F=UL94V-0, without screw hole and with mounting pegs, White  
  
A=4.20mm(.165")\*No. of Spaces  
B=A+5.40mm(.213")

Detail Circuit Pattern Schedule:



TOLERANCE UNLESS OTHERWISE SPECIFIED			LEOCO CORPORATION <a href="http://www.leoco.com.tw">http://www.leoco.com.tw</a>		
mm	mm	inch	APPROVED BY:	DATE:	TITLE:
[inch]			Chard	2019.04.24	4.2mm(.165") Pitch Right Angle PCB Power Connector
1 PLACE	± 0.30	± ---	CHECKED BY:	DATE:	
2 PLACES	± 0.20	± .012	Angel	2019.04.24	
3 PLACES	± 0.10	± .008	DRAWN BY:	DATE:	PART NO.: 6745P**H*0*
4 PLACES	± ---	± .004	Dylan	2019.04.24	
ANGULAR ±1°			SIZE: A3	SCALE: 1:1	DRAWING NO.: 674537S
					REV.: B
					SHEET: 1 OF 1