

RoHS COMPLIANT

* Material: NYLON 6T, UL94V-0

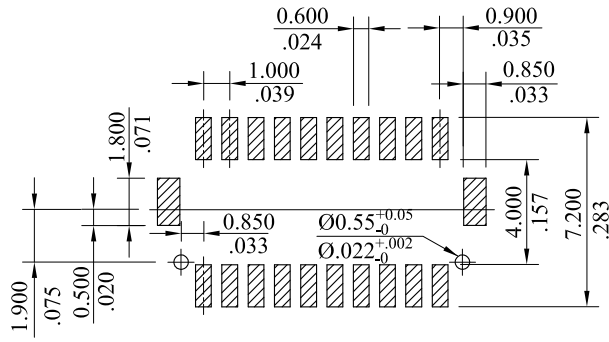
* Pin Material: Brass/Tin-plated

* Solder Tabs: Brass/Tin-plated

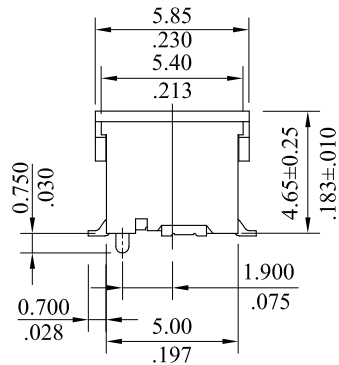
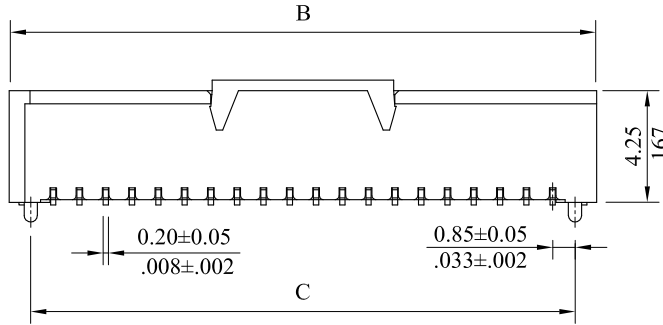
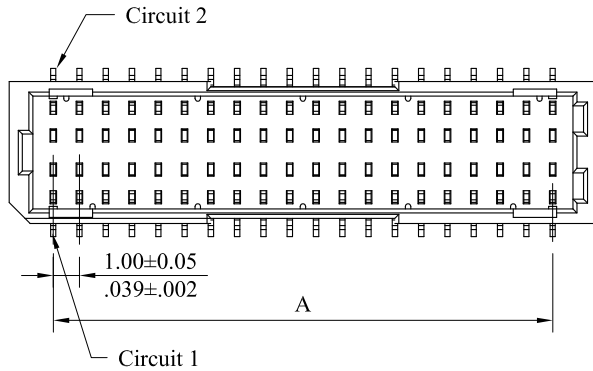
Ordering Information:

1020P ** M * 00
 1 2 3

- 1.No.of circuits
- 2.M:SMT TYPE
- 3.V: Straight Type
- J: Have Pillar Straight Type



Recommended Hole Pattern



No.of circuits	DIM. A	DIM. B	DIM. C
2X10	9.00(.354)	12.30(.484)	10.70(.421)
2X15	14.00(.551)	17.30(.681)	15.70(.618)
2X20	19.00(.748)	22.30(.878)	20.70(.815)
2X25	24.00(.945)	27.30(1.075)	25.70(1.012)

leoco LEOCO CORPORATION

GENERAL TOLERANCES:
(UNLESS SPECIFIED)

	mm	inch
1 PLACE	± 0.30	± --
2 PLACES	± 0.20	± .012
3 PLACES	± 0.10	± .008
4 PLACES	± --	± .004

ANGULAR ± (1°)

APPROVED:

DATE:

CHECKED:

DATE:

DRAWN:

DATE:

PART NO.:

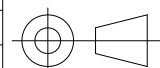
1020P**M*00

TITLE:

HEADER

DRAWING NO.:

102003S



UNITS
mm
inch

SCALE	SIZE	SHEET	REV.
2:1	A4	1/1	B

REV.	ECO. NO.	CHG.	APP.
B	ES101138		
A	DWG REL		