

\*\*\* 1055 Series \*\*\*

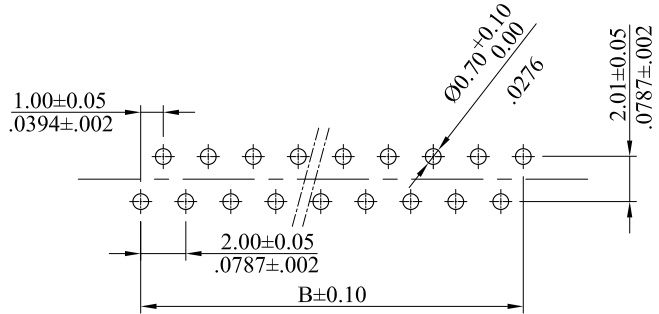
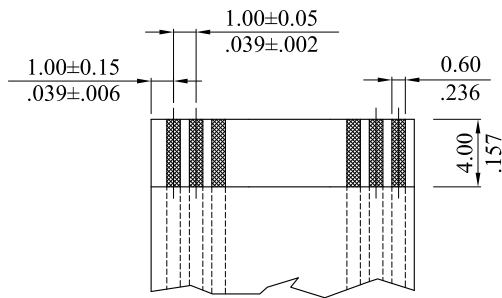
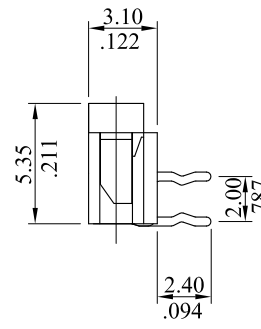
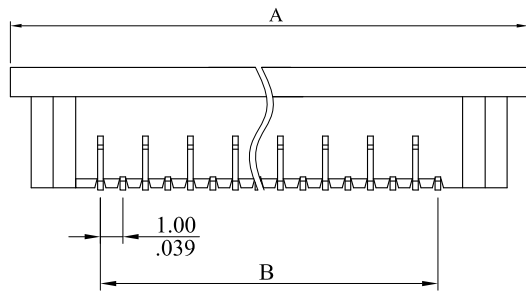
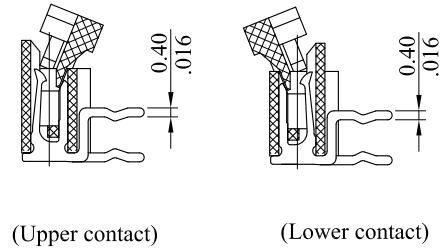
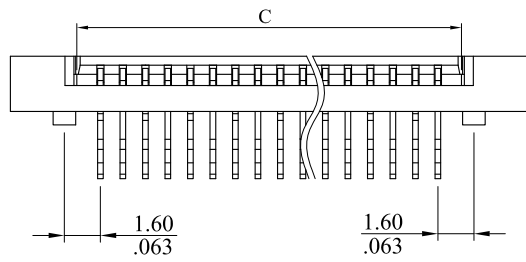
RoHS COMPLIANT

Material:

- \* Insulator: Thermalplastic PA46 UL94V-0
- \* Terminal: Phosphor bronze C5191

Electrical:

- \* Current Rating: 0.5A
- \* Contact Resistance: 30 mΩ Max.
- \* Withstanding Voltage: 500V
- \* Insulator Resistance: 500MΩ Min.
- \* Temperature Rating : -20°C to +85°C



				LECO CORPORATION GENERAL TOLERANCES: (UNLESS SPECIFIED)	APPROVED:	PART NO.:					
					DATE:	1055S**HT*0					
				mm	inch	CHECKED:	TITLE:				
				1 PLACE	± 0.30	± --	1.0mm(.039") Pitch				
				2 PLACES	± 0.20	± .012	FFC/FPC Connector				
B	ES101209			3 PLACES	± 0.10	± .008	DRAWING NO.:				
				4 PLACES	± --	± .004	105502S				
A	DWG REL			ANGULAR ± ( 1° )		DATE:	UNITS	SCALE	SIZE	SHEET	REV.
REV.	ECO. NO.	CHG.	APP.				mm inch	3:1	A4	1/2	B

Ordering Information :

RoHS COMPLIANT

1055S \*\* H T \* 0  
1 2 3

1. No. of circuits


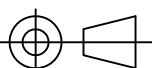
2. Plating:

T=Tin plated 100~200u" over 50~100u" nickel overall

3. 1 = Upper contact

2 = Lower contact

Circuits	Dim.A	Dim.B	Dim.C
04	11.00(.433)	3.00(.118)	5.10(.201)
05	12.00(.472)	4.00(.157)	6.10(.240)
06	13.00(.512)	5.00(.197)	7.10(.280)
07	14.00(.551)	6.00(.236)	8.10(.319)
08	15.00(.591)	7.00(.276)	9.10(.358)
09	16.00(.630)	8.00(.315)	10.10(.398)
10	17.00(.669)	9.00(.354)	11.10(.437)
11	18.00(.709)	10.00(.394)	12.10(.476)
12	19.00(.748)	11.00(.433)	13.10(.516)
13	20.00(.787)	12.00(.472)	14.10(.555)
14	21.00(.827)	13.00(.512)	15.10(.594)
15	22.00(.866)	14.00(.551)	16.10(.634)
16	23.00(.906)	15.00(.591)	17.10(.673)
17	24.00(.945)	16.00(.630)	18.10(.713)
18	25.00(.984)	17.00(.669)	19.10(.752)
19	26.00(1.024)	18.00(.709)	20.10(.791)
20	27.00(1.063)	19.00(.748)	21.10(.831)
21	28.00(1.102)	20.00(.787)	22.10(.870)
22	29.00(1.142)	21.00(.827)	23.10(.909)
23	30.00(1.181)	22.00(.866)	24.10(.949)
24	31.00(1.220)	23.00(.906)	25.10(.988)
25	32.00(1.260)	24.00(.945)	26.10(1.028)
26	33.00(1.299)	25.00(.984)	27.10(1.067)
27	34.00(1.339)	26.00(1.024)	28.10(1.106)
28	35.00(1.378)	27.00(1.063)	29.10(1.146)
29	36.00(1.417)	28.00(1.102)	30.10(1.185)
30	37.00(1.457)	29.00(1.142)	31.10(1.224)
31	38.00(1.496)	30.00(1.181)	32.10(1.268)
32	39.00(1.535)	31.00(1.220)	33.10(1.303)
33	40.00(1.575)	32.00(1.260)	34.10(1.343)
34	41.00(1.614)	33.00(1.299)	35.10(1.382)
35	42.00(1.654)	34.00(1.339)	36.10(1.421)

				 LEOCO CORPORATION			APPROVED:		PART NO.:				
							GENERAL TOLERANCES: (UNLESS SPECIFIED)		DATE:		1055S**HT*0		
						CHECKED:		TITLE:					
						DATE:		1.0mm(.039") Pitch FFC/FPC Connector					
						DRAWN:		DRAWING NO.:					
						DATE:		105502S					
B	ES101209			1 PLACE	± 0.30	± --		UNITS	SCALE	SIZE	SHEET	REV.	
A	DWG REL			2 PLACES	± 0.20	± .012		mm	3:1	A4	2/2	B	
REV.	ECO. NO.	CHG.	APP.	3 PLACES	± 0.10	± .008		inch					
				4 PLACES	± --	± .004							
				ANGULAR ± ( 1° )									