

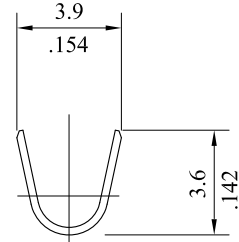
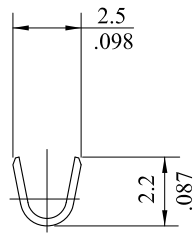
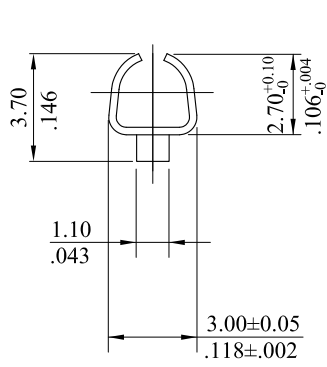
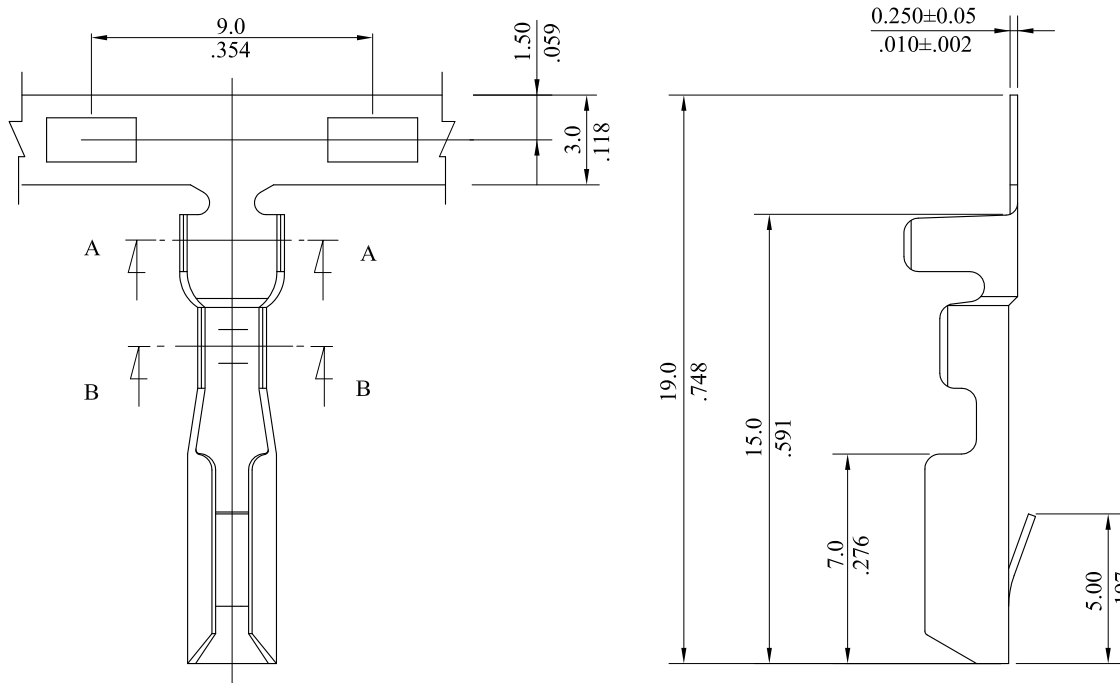
Notes:

1084TPB*000

I : Nickel
0 : Tin

P : Phosphor Bronze

RoHS COMPLIANT



				leoco LEOCO CORPORATION		APPROVED:		PART NO.: 1084TPB*000				
				GENERAL TOLERANCES: (UNLESS SPECIFIED)		DATE:		TITLE: TERMINAL				
						CHECKED:		DRAWING NO.: 108401S				
						DATE:						
B	ES101209			1 PLACE	± 0.30	± --	DRAWN:					
				2 PLACES	± 0.20	± .012	DATE:					
				3 PLACES	± 0.10	± .008	UNITS		SCALE	SIZE	SHEET	REV.
				4 PLACES	± --	± .004	mm		4:1	A4	1/1	B
REV.	ECO. NO.	CHG.	APP.	ANGULAR ± (1°)		inch						