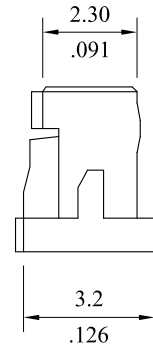
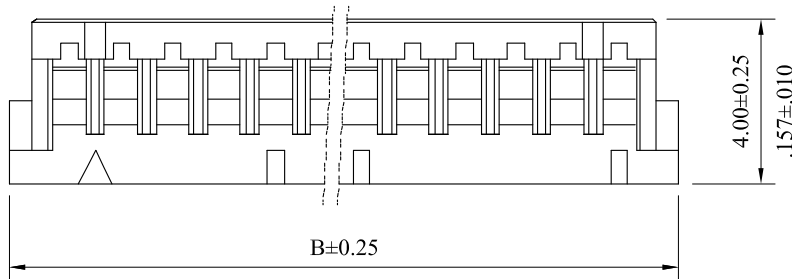
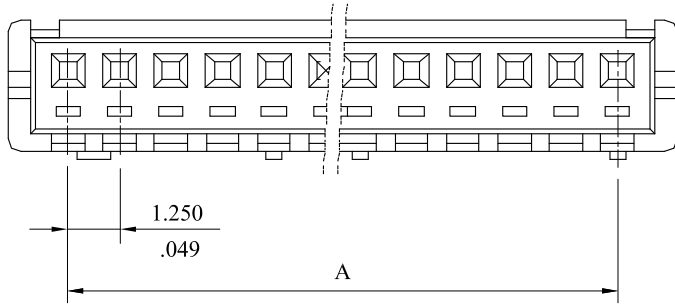


RoHS COMPLIANT

* Material: Nylon 66,UL94V-0



No.of circuits	DIM. A	DIM. B	No.of circuits	DIM. A	DIM. B
2	1.25(.049)	4.15(.163)	12	13.75(.541)	16.65(.656)
3	2.50(.098)	5.40(.213)	13	15.00(.591)	17.90(.705)
4	3.75(.148)	6.65(.262)	14	16.25(.640)	19.15(.754)
5	5.00(.197)	7.90(.311)	15	17.50(.689)	20.40(.803)
6	6.25(.246)	9.15(.360)	16	18.75(.738)	21.65(.852)
7	7.50(.295)	10.40(.409)	17	20.00(.787)	22.90(.902)
8	8.75(.344)	11.65(.459)	18	21.25(.837)	24.15(.951)
9	10.00(.394)	12.90(.508)	19	22.50(.886)	25.40(1.000)
10	11.25(.443)	14.15(.557)	20	23.75(.935)	26.65(1.049)
11	12.50(.492)	15.40(.606)			

				LEOCO CORPORATION		APPROVED:		PART NO.:					
				GENERAL TOLERANCES: (UNLESS SPECIFIED)		DATE:		1252S**0000					
						CHECKED:		TITLE:					
						DATE:		HOUSING					
						DRAWN:		DRAWING NO.:					
						DATE:		125201S					
D	ES101209							UNITS	SCALE	SIZE	SHEET	REV.	
C	ES081001							$\frac{mm}{inch}$	5:1	A4	1/1	D	
B	ES070872			1 PLACE	± 0.30	± --							
A	DWG REL			2 PLACES	± 0.20	± .012							
REV.	ECO. NO.	CHG.	APP.	3 PLACES	± 0.10	± .008							
				4 PLACES	± --	± .004							
				ANGULAR ± (1°)									