

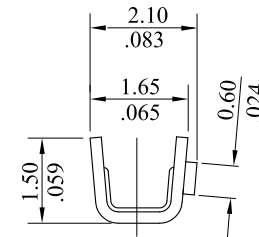
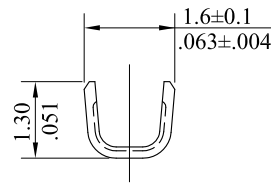
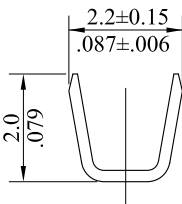
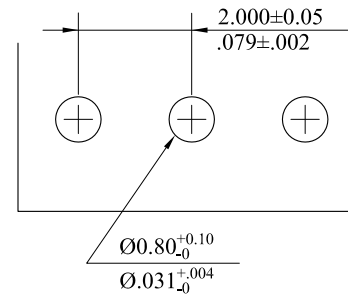
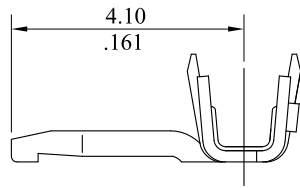
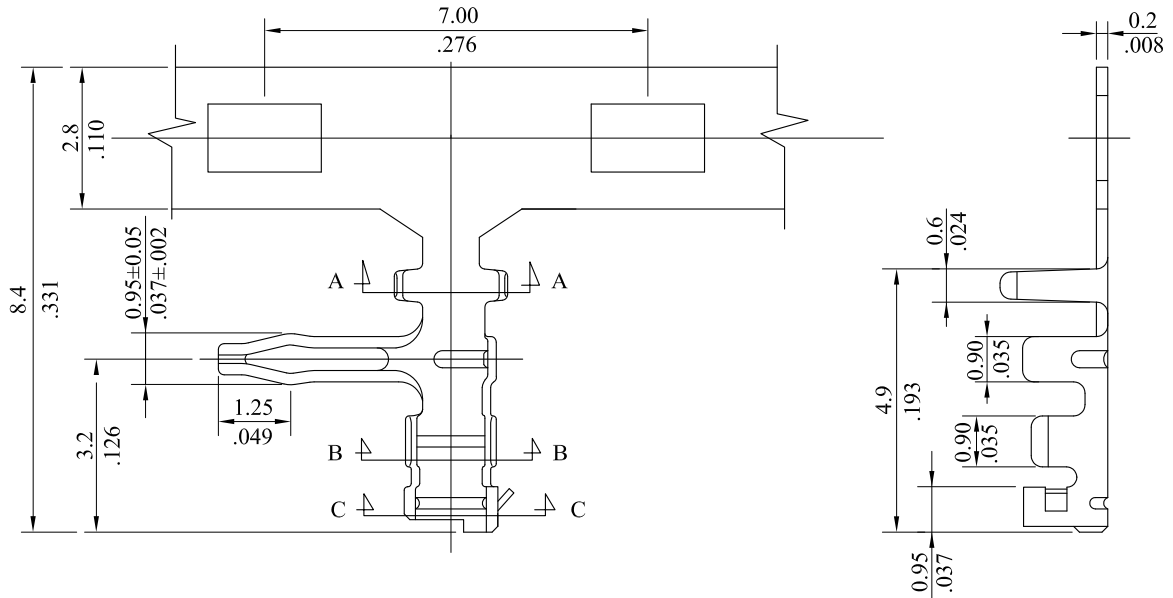
* Plating : Tin plated 120μ" min. over 30μ"min. nickel overall

RoHS COMPLIANT

Ordering information:

2012T * B0H0A

- P = Phosphor bronze
- C = Brass



SEC. A-A

SEC. B-B

SEC. C-C

leoco LEOCO CORPORATION

GENERAL TOLERANCES:
(UNLESS SPECIFIED)

	mm	inch
1 PLACE	± 0.30	± ---
2 PLACES	± 0.20	± .012
3 PLACES	± 0.10	± .008
4 PLACES	± ---	± .004

ANGULAR ± (1°)

APPROVED:

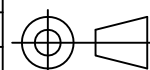
DATE:

CHECKED:

DATE:

DRAWN:

DATE:



PART NO.:

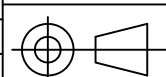
2012T*B0H0A

TITLE:

TERMINAL

DRAWING NO.:

201206S



UNITS
mm
inch

SCALE
7:1

SIZE
A4

SHEET
1/1

REV.
C

REV.	ECO. NO.	CHG.	APP.
C	ES101222		
B	ES090454		
A	DWG REL		