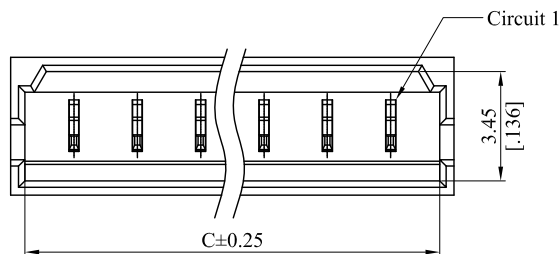


RoHS COMPLIANT

CUSTOMER DRAWING

REV.	ECO. NO.	DESCRIPTION	DATE
A	DWG. REL.	APPROVED	2018.04.19

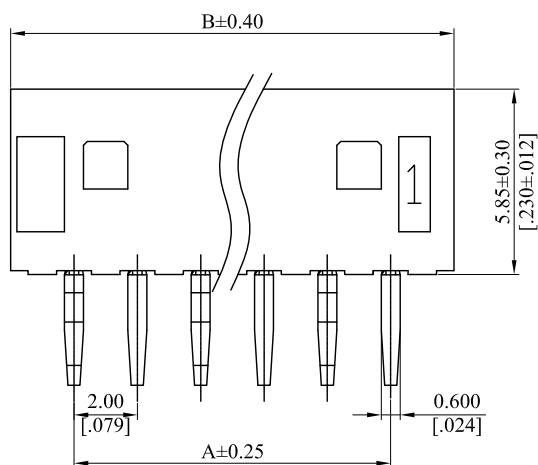


Recommended PCB Layout

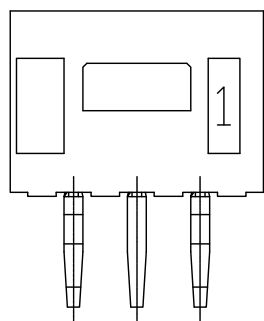
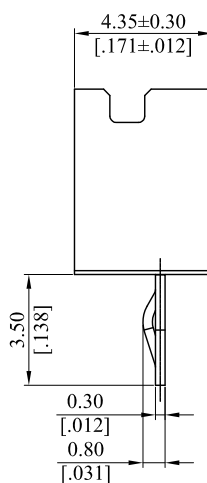
Note:
 Material:
 Insulator: Thermoplastic, UL94 V-0, Natural
 Contact: Copper Alloy/Tin Plated

General Part Number:
 2015P ** V000
 1
 1. No. of circuits(02~15)

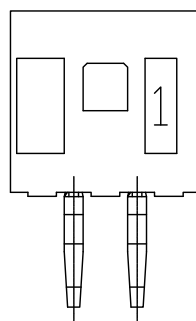
A=2.00mm(.079")*No. of spaces
 B=A+4.00mm(.157")
 C=A+3.10mm(.122")



04P-15P



03P



02P

TOLERANCE UNLESS OTHERWISE SPECIFIED			LEOCO CORPORATION http://www.leoco.com.tw		
	mm	inch	APPROVED BY:	DATE:	TITLE:
1 PLACE	± 0.30	± --	Chard	2018.04.19	2.00mm(.079") Pitch Wafer Vertical Type
2 PLACES	± 0.20	± .012	CHECKED BY:	DATE:	
3 PLACES	± 0.10	± .008	Angel	2018.04.19	PART NO.: 2015P**V000
4 PLACES	± --	± .004	DRAWN BY:	DATE:	
ANGULAR ±1°			Brian	2018.04.19	
SIZE:	A3	SCALE:	1:1		DRAWING NO.:
					201506S
					REV.:
					A
					SHEET:
					1 OF 1