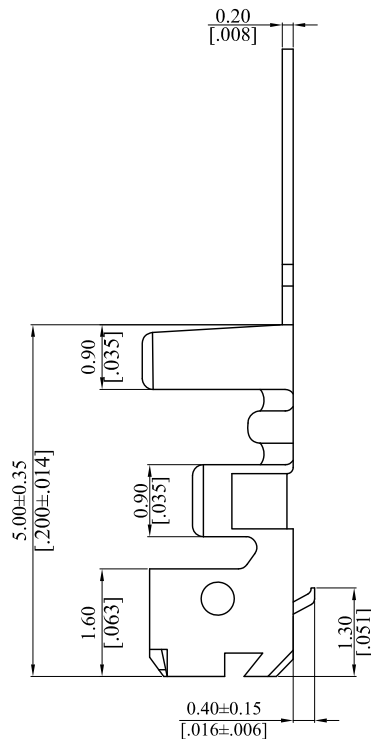
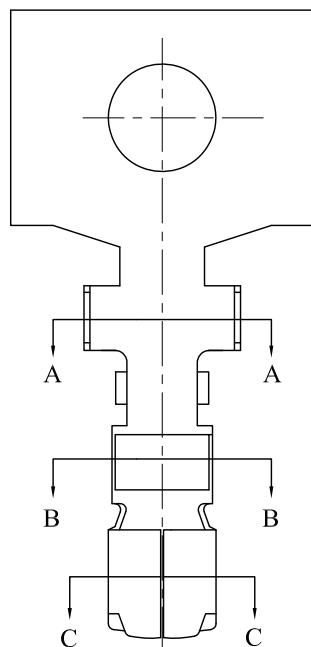


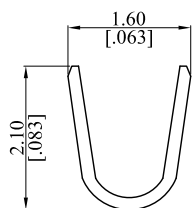
RoHS COMPLIANT

CUSTOMER DRAWING

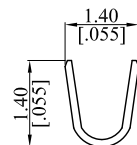
REV.	ECO. NO.	DESCRIPTION	DATE
C	DWG.REL.	APPROVED	2018.04.19



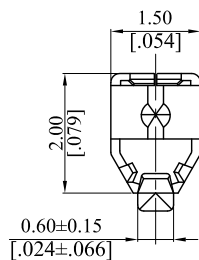
Note:  
Material: Phosphor Bronze/Tin Plated  
Wire Range: AWG 24-30




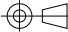
Section: A-A



Section: B-B



Section: C-C

TOLERANCE UNLESS OTHERWISE SPECIFIED			 <b>LEOCO CORPORATION</b> <a href="http://www.leoco.com.tw">http://www.leoco.com.tw</a>			
<b>mm</b> [inch]	mm	inch	APPROVED BY: Chard	DATE: 2018.04.19	TITLE:  Crimp Terminal	
1 PLACE	± 0.30	± --	CHECKED BY: Angel	DATE: 2018.04.19		
2 PLACES	± 0.20	± .012	DRAWN BY: Brian	DATE: 2018.04.19	PART NO.: 2015TPB0000	
3 PLACES	± 0.10	± .008	SIZE: A3	SCALE: 1:1		DRAWING NO.: 201502S
4 PLACES	± --	± .004	ANGULAR ±1°		REV.: C	SHEET: 1 OF 1