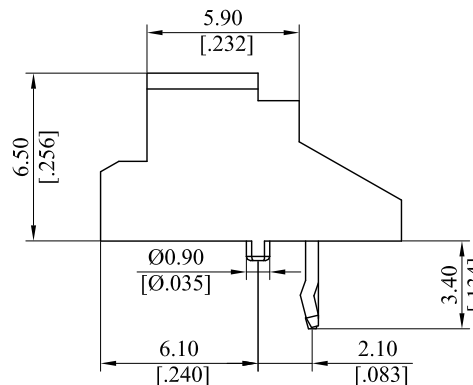
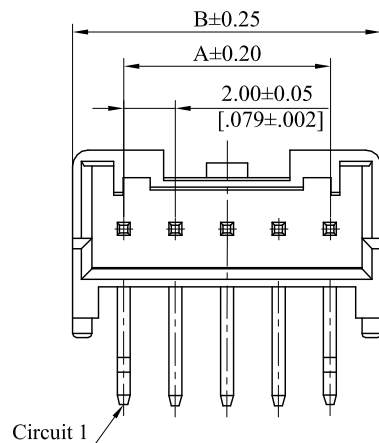
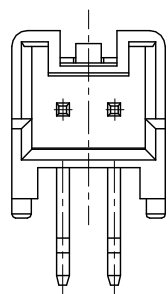


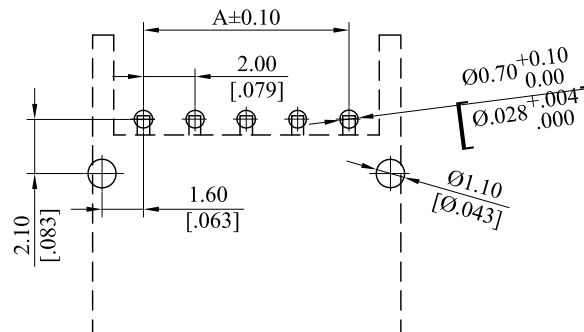
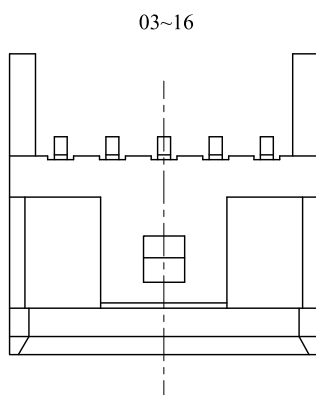
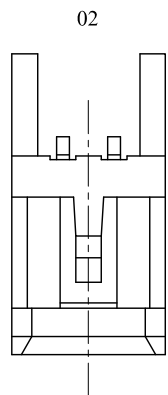
RoHS COMPLIANT

CUSTOMER DRAWING			
REV.	ECO. NO.	DESCRIPTION	DATE
A	DWG. REL.	APPROVED	2017.02.08



Material:  
 Base: PA66, UL94 V-0, White;  
 Terminal: Copper alloy;

General Part Number:  
 2029P \*\* HT01  
 1/2  
 1.No. of circuits  
 2. Plating:  
 T= Tin plated 80µ" min. over 20µ" min. Nickel  
 underplating overall



A=2.00mm\*(No.of circuits-1)  
 B=A+3.96mm

Recommended P.C.B Layout  
 General Tolerance: ±0.05

TOLERANCE UNLESS OTHERWISE SPECIFIED			<b>LEOCO CORPORATION</b> <a href="http://www.leoco.com.tw">http://www.leoco.com.tw</a>		
mm			APPROVED BY:	DATE:	TITLE:
[inch]	mm	inch	Chard	2017.03.13	2.0mm Pitch Shrouder Header Right Angle Type
1 PLACE	± 0.30	± ---	CHECKED BY:	DATE:	
2 PLACES	± 0.20	± .012	Topmoon	2017.03.13	PART NO.: 2029P**HT01
3 PLACES	± 0.10	± .008	DRAWN BY:	DATE:	
4 PLACES	± ---	± .004	Jim	2017.03.13	DRAWING NO.: 202902S
ANGULAR ±1°			SIZE:	SCALE:	
			A3	1:1	A
					SHEET: 1 OF 1