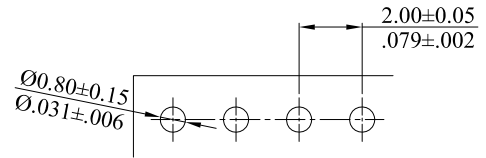
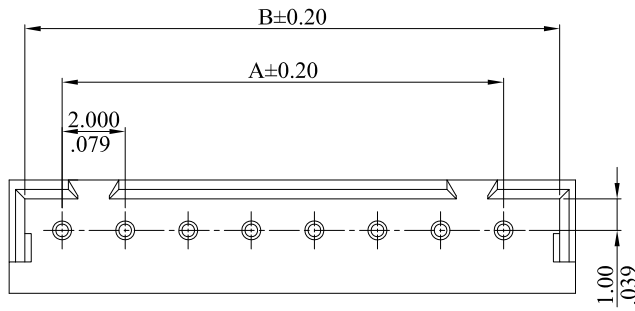


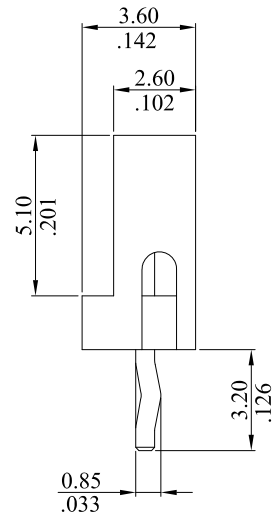
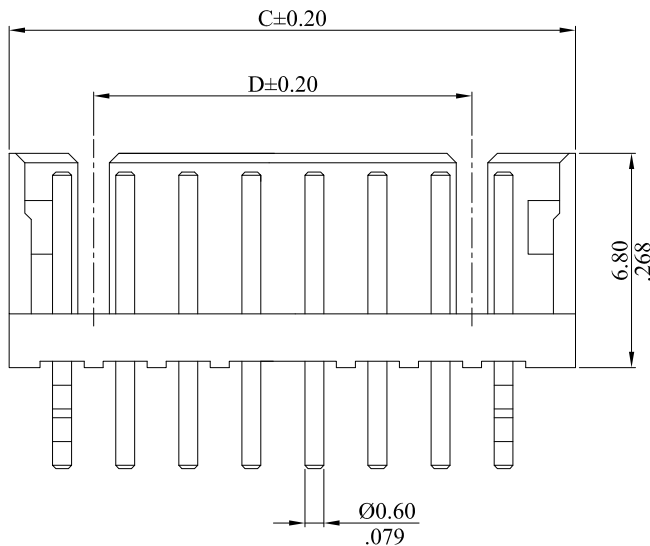
RoHS COMPLIANT

Insulation: Nylon66,UL94V-0
 Black: White
 Contact: Brass/Tin plated 120u" min. over 30u" min. nickel overall

Ordering Information
 2056P**V00A
 1
 1. No.of circuits



Recommended P.C.B Layout (Top Side)



$A = 2.00\text{mm}(.079\text{'}) \times \text{No. of spaces}$
 $B = A + 2.96\text{mm}(.117\text{'})$
 $C = A + 3.96\text{mm}(.156\text{'})$
 $D = A - 2.00\text{mm}(.079\text{'})$

				LEOCO CORPORATION		APPROVED: CHARD		PART NO.: 2056P**V00A					
				GENERAL TOLERANCES: (UNLESS SPECIFIED)		DATE:		TITLE: 2.00mm PITCH 180° WAFER					
						CHECKED: SAM							
						DATE: 12.05.11		DRAWING NO.: 205601S					
						DRAWN: ANGEL							
						DATE: 12.05.11							
A	DWG REL							UNITS		SCALE	SIZE	SHEET	REV.
REV.	ECO. NO.	CHG.	APP.	ANGULAR $\pm (1^\circ)$				mm / inch		4:1	A4	1/1	A