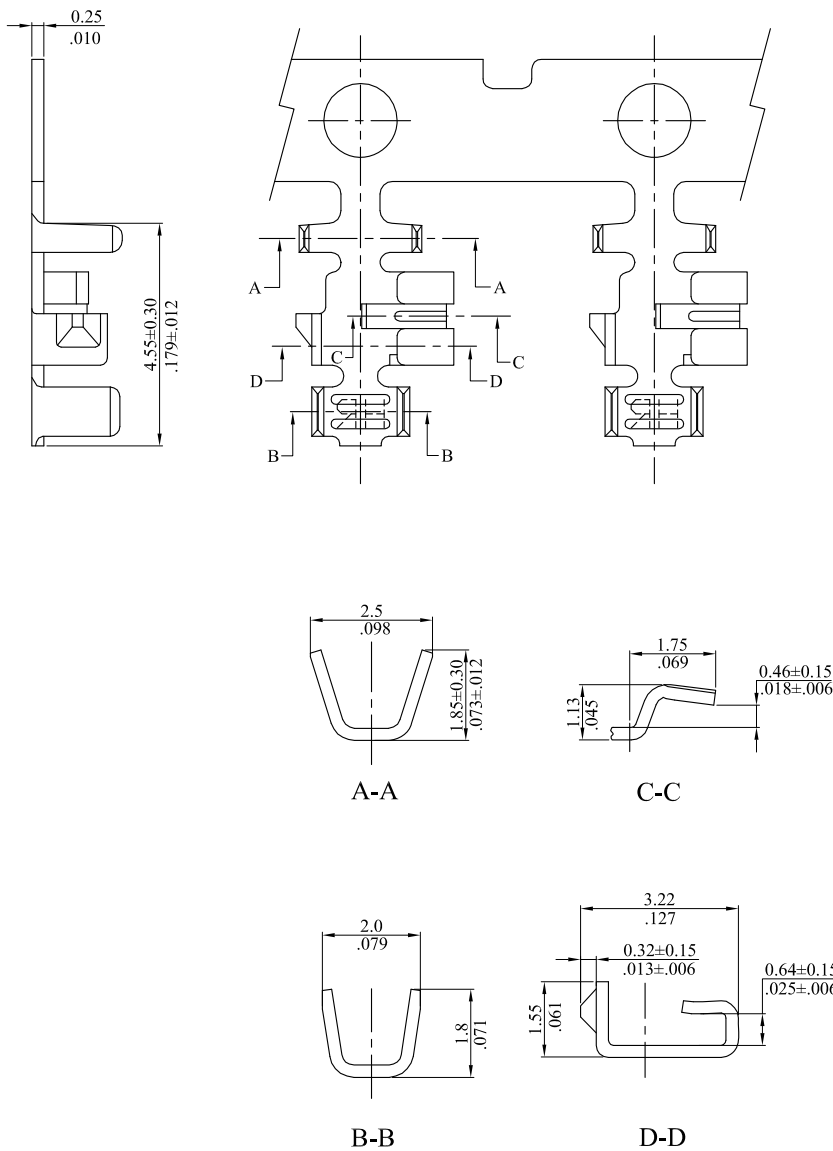


RoHS COMPLIANT

Material: Phosphor Bronze  
AWG: #22~#26

Order Information:  
2056TPB\*00A

1  
1.0=Plating: Tin plated  
N=Unplated



				LECO CORPORATION	APPROVED:	PART NO.:				
					GENERAL TOLERANCES: (UNLESS SPECIFIED)	DATE:	2056TPB*00A			
					CHECKED:	TITLE:				
					DATE:	TERMINAL				
					DRAWN:	DRAWING NO.:				
					SMILE 2012.07.09	205603S				
					DATE:	UNITS	SCALE	SIZE	SHEET	REV.
REV.	ECO. NO.	CHG.	APP.	ANGULAR ± ( 1° )		mm inch	~	A4	1/1	A