

Ordering information:

- \* Insulator : Thermoplastic, UL 94V-O Rated.
- \* Contactor : Brass
- \* Shell : Brass

2075 S 0 \* 0 \* \* L  
1 2 3

RoHS COMPLIANT

1. Contact plating:

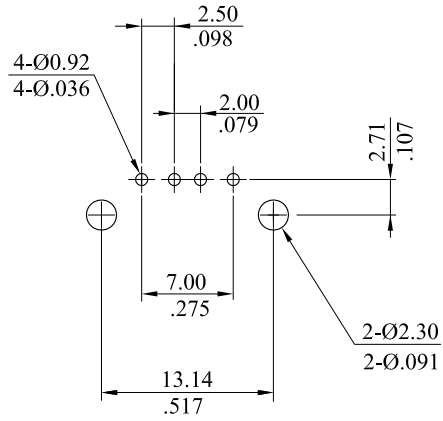
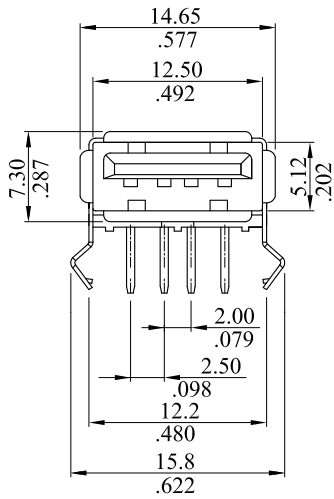
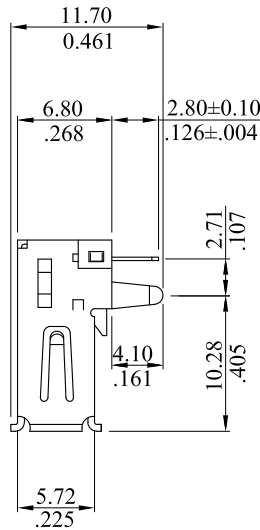
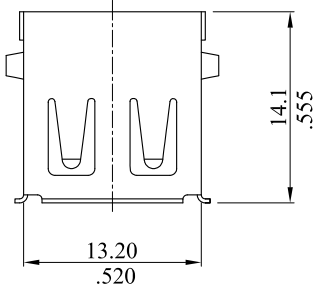
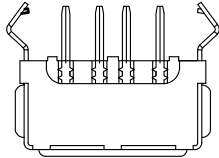
- J= 15u"min. seckective gold plated over 50μ"min. nickel
- K = 30u"min. selective gold plated over 50u" min.nickel
- F = Selective gold flash over 50μ"min.nickel

2. Type:

1 : H type+rear shell

3. Color :

0 : Beige 1 : Black 2 : White



RECOMMENDED HOLE PATTERN

I	ES141001	Update Notes	LEOCO CORPORATION	APPROVED:	PART NO.:																			
H	ES101222			DATE:	2075S0*01*L																			
G	ES090103		GENERAL TOLERANCES: (UNLESS SPECIFIED)	CHECKED:	TITLE:																			
F	ES071037			DATE:	USB CONNECTOR																			
E	ES061207		<table border="1"> <thead> <tr> <th></th> <th>mm</th> <th>inch</th> </tr> </thead> <tbody> <tr> <td>1 PLACE</td> <td>± 0.30</td> <td>± --</td> </tr> <tr> <td>2 PLACES</td> <td>± 0.20</td> <td>± .012</td> </tr> <tr> <td>3 PLACES</td> <td>± 0.10</td> <td>± .008</td> </tr> <tr> <td>4 PLACES</td> <td>± --</td> <td>± .004</td> </tr> </tbody> </table>		mm	inch	1 PLACE	± 0.30	± --	2 PLACES	± 0.20	± .012	3 PLACES	± 0.10	± .008	4 PLACES	± --	± .004	DRAWN:	DRAWING NO.:				
	mm	inch																						
1 PLACE	± 0.30	± --																						
2 PLACES	± 0.20	± .012																						
3 PLACES	± 0.10	± .008																						
4 PLACES	± --	± .004																						
REV.	ECO. NO.	DESCRIPTION	ANGULAR ± ( 1° )	Chaos DATE: 10/08'14	UNITS mm / inch	SCALE	SIZE	SHEET	REV.															
					~	A4	1/1	I																