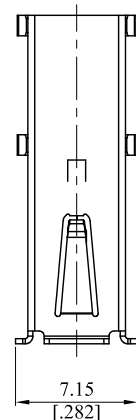
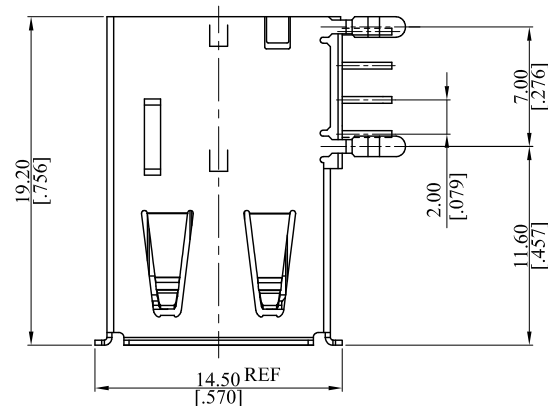
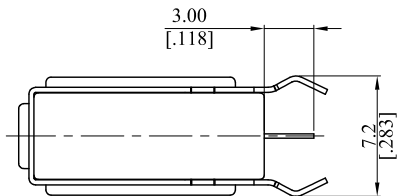


RoHS COMPLIANT

CUSTOMER DRAWING

REV.	ECO. NO.	DESCRIPTION
A	DWG. REL.	APPROVED
B	ES071037	
C	ES101222	
D	ES160414	Update Dim



Note:

Material:

Insulator: High Temperature Thermoplastic with G.F, UL94 V-0;  
 Contact: Copper Alloy, T=0.25mm;  
 Shell : Copper Alloy, T=0.30mm.

Ordering Information:

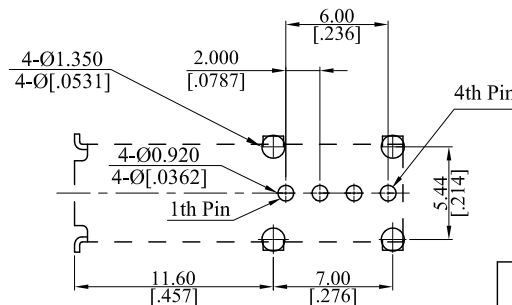
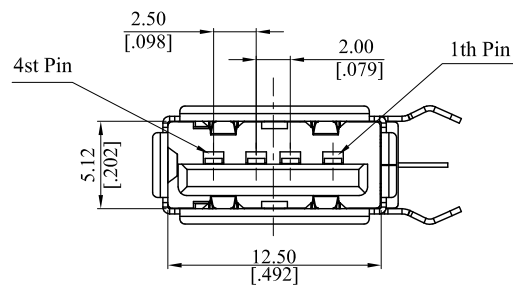
2075 S 0 \* 0 7 \* Z  
 1 2

1. Plating:

F: Selective Gold flash on contact area over 30µ" min. Nickel underplating overall, Tin plated on solder tails.  
 J: 15µ" min. Selective Gold on contact area over 30µ" min. Nickel underplating overall, Tin plated on solder tails;  
 K: 30µ" min. Selective Gold on contact area over 30µ" min. Nickel underplating overall, Tin plated on solder tails;

2. Color :

0 : Beige 1 : Black 2 : White



RECOMMENDED HOLE PATTERN

Tolerance=±0.05

TOLERANCE UNLESS OTHERWISE SPECIFIED			LEOCO CORPORATION <a href="http://www.leoco.com.tw">http://www.leoco.com.tw</a>	
mm	mm	inch	APPROVED BY:	DATE:
[inch]			Chard	2016.12.16
1 PLACE	± 0.30	± ---	CHECKED BY:	DATE:
2 PLACES	± 0.20	± .012	Jack	2016.12.16
3 PLACES	± 0.10	± .008	DRAWN BY:	DATE:
4 PLACES	± ---	± .004	Sandra	2016.12.16
ANGULAR ±1°			SIZE:	SCALE:
			A3	1:1
			TITLE: USB A Type,H Type,Female	
			PART NO.: 2075S0*07*Z	
			DRAWING NO.:	REV.:
			207560S	D
			SHEET:	1 OF 1