

RoHS COMPLIANT

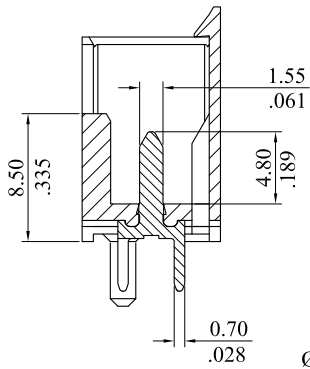
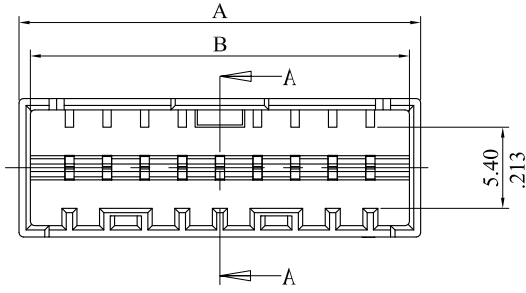
Notes:

1. Insulator: Thermalplastic PA66+30%GF, UL94V-0, Nature
2. Terminal: Brass  
Finish: Tin plated 120u" min. overall or Silver plated.
3. Compliant IEC 60695-2-11 and IEC 60335-1(750°C ,Flamme<2S) .
- 4.\* For 3P is 5.70mm, 2P is 3.00mm.

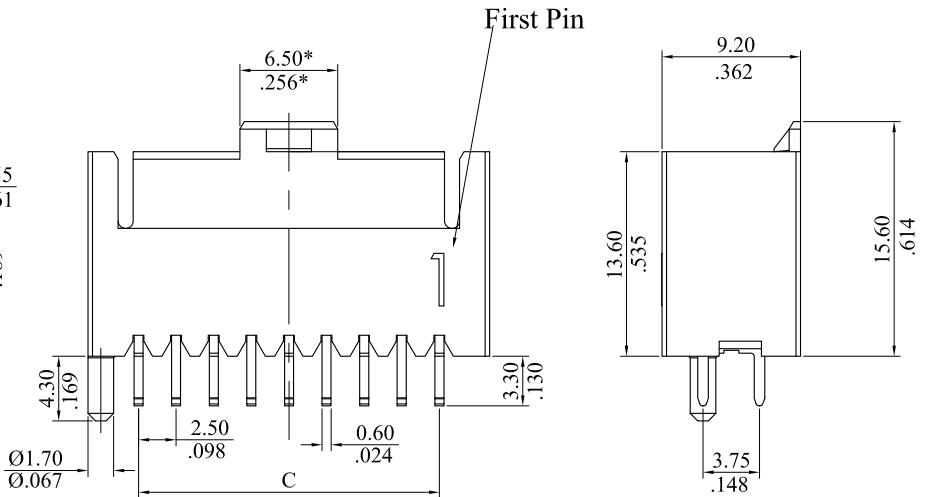
Ordering Information:

2514P\*\*D0\*\*  
1 2 3 4

1. No. of circuits
2. U: Post is at the upside  
S: Post is at the upside, terminal is Silver plated.  
D: Post is at the downside
3. 0=Normal PCB layout  
1=Reverse PCB layout
4. See the Table of next page.



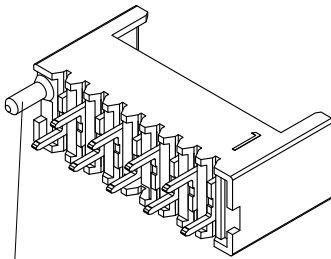
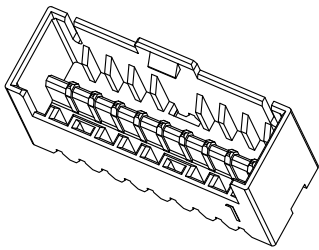
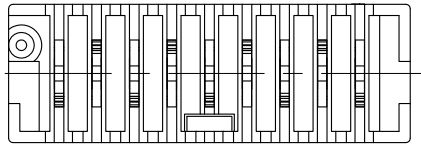
SECTION A-A



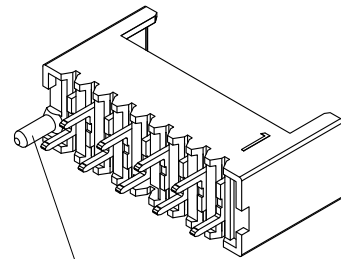
$A=C+6.7$

$B=C+5.2$

$C=2.50*(\text{No. of circuit}-1)$



2514P\*\*D0\*\*



2514P\*\*U1\*\*

E	ES150807	新增KEY位变化	<b>LECO CORPORATION</b>	APPROVED: <b>Chard</b> 2015.8.6	PART NO.: <b>2514P*****</b>															
D	ES150409	新增KEY位变化		DATE:	CHECKED: <b>Topmoon</b> 2015.8.6	TITLE: Rast 2.5 Wafer														
C	ES130617	新增KEY位变化	GENERAL TOLERANCES: (UNLESS SPECIFIED)	DATE:	DRAWN: <b>Gavin</b> 2015.8.6															
B	ES120315	新增KEY位变化	<table border="1"> <thead> <tr> <th></th> <th>mm</th> <th>inch</th> </tr> </thead> <tbody> <tr> <td>1 PLACE</td> <td>± 0.30</td> <td>± --</td> </tr> <tr> <td>2 PLACES</td> <td>± 0.20</td> <td>± .012</td> </tr> <tr> <td>3 PLACES</td> <td>± 0.10</td> <td>± .008</td> </tr> <tr> <td>4 PLACES</td> <td>± --</td> <td>± .004</td> </tr> </tbody> </table>		mm	inch	1 PLACE	± 0.30	± --	2 PLACES	± 0.20	± .012	3 PLACES	± 0.10	± .008	4 PLACES	± --	± .004	DATE:	DRAWING NO.: <b>251405S</b>
	mm	inch																		
1 PLACE	± 0.30	± --																		
2 PLACES	± 0.20	± .012																		
3 PLACES	± 0.10	± .008																		
4 PLACES	± --	± .004																		
A	DWG REL		ANGULAR ±1°	DATE:	<table border="1"> <thead> <tr> <th>UNITS</th> <th>SCALE</th> <th>SIZE</th> <th>SHEET</th> <th>REV.</th> </tr> </thead> <tbody> <tr> <td>mm</td> <td>2:1</td> <td>A4</td> <td>1/5</td> <td>E</td> </tr> </tbody> </table>	UNITS	SCALE	SIZE	SHEET	REV.	mm	2:1	A4	1/5	E					
UNITS	SCALE	SIZE	SHEET	REV.																
mm	2:1	A4	1/5	E																
REV.	ECO. NO.	DISCRIPTION																		

Notes:

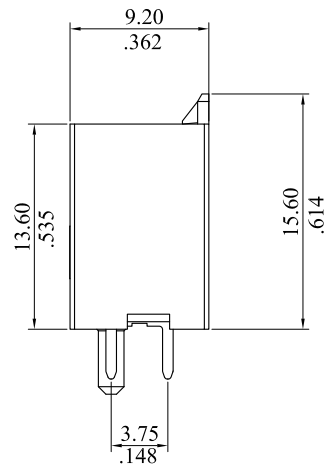
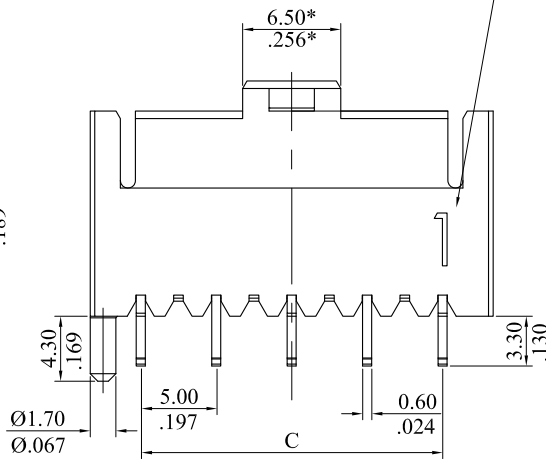
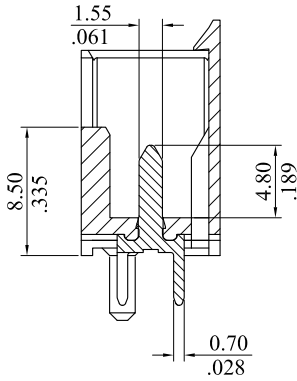
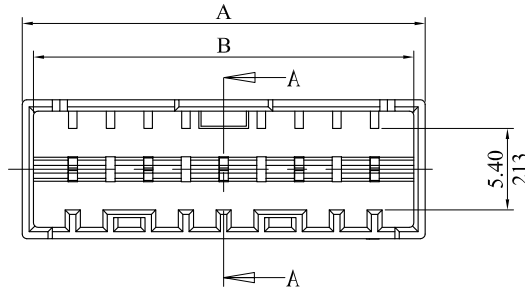
1. Insulator: Thermalplastic PA66+30%GF, UL94V-0, Nature
2. Terminal: Brass  
Finish: Tin plated 120u" min. overall or Silver plated.
3. Compliant IEC 60695-2-11 and IEC 60335-1(750°C ,Flamme<2S) .
- 4.\* For 3P is 5.70mm, 2P is 3.00mm.

RoHS COMPLIANT

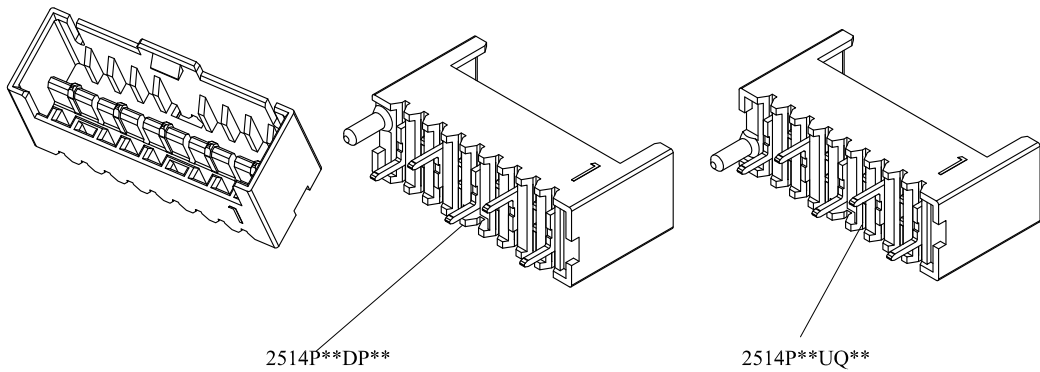
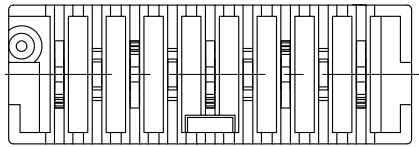
Ordering Information:

2514P \*\* D P \*\*  
1 2 3 4

1. No. of circuits
- U: Post is at the upside  
S: Post is at the upside, terminal is Silver plated.  
D: Post is at the downside
- P=Normal PCB layout(Pitch=5.0mm)  
Q=Reverse PCB layout(Pitch=5.0mm)
4. See the Table of next page.

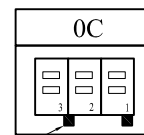
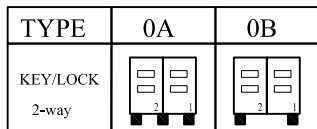


A=C+6.7  
B=C+5.2  
C=2.50\*(No. of circuit-1)

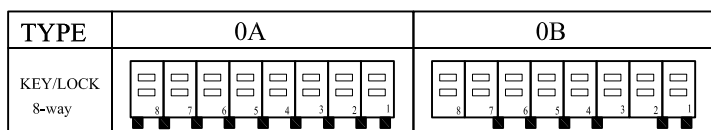
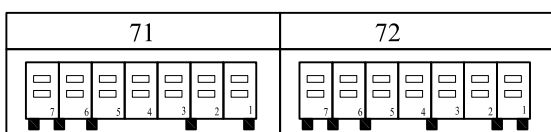
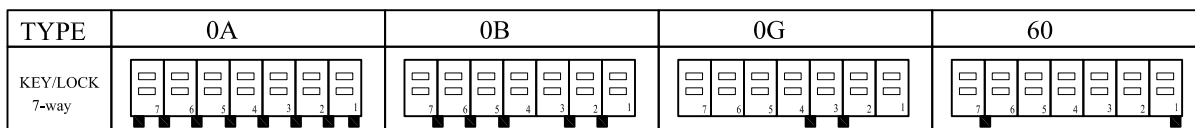
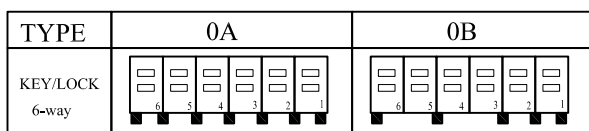
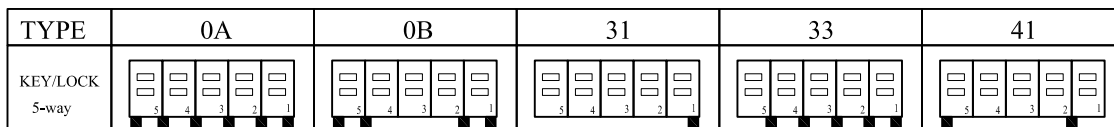
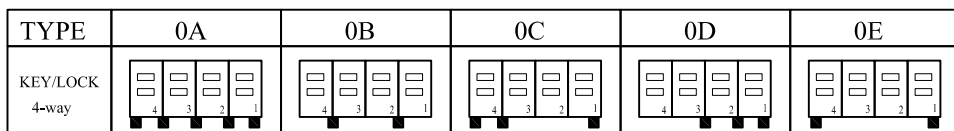
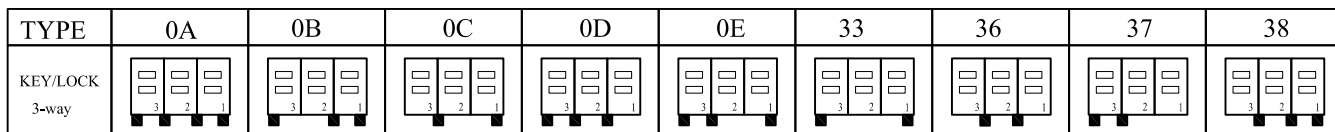


E	ES150807	新增KEY位变化	<b>LECO CORPORATION</b> GENERAL TOLERANCES: (UNLESS SPECIFIED)	APPROVED: <b>Chard</b> 2015.8.6	PART NO.: <b>2514P*****</b>																
D	ES150409	新增KEY位变化		<table border="1"> <thead> <tr> <th></th> <th>mm</th> <th>inch</th> </tr> </thead> <tbody> <tr> <td>1 PLACE</td> <td>± 0.30</td> <td>± --</td> </tr> <tr> <td>2 PLACES</td> <td>± 0.20</td> <td>± .012</td> </tr> <tr> <td>3 PLACES</td> <td>± 0.10</td> <td>± .008</td> </tr> <tr> <td>4 PLACES</td> <td>± --</td> <td>± .004</td> </tr> </tbody> </table>		mm	inch	1 PLACE	± 0.30	± --	2 PLACES	± 0.20	± .012	3 PLACES	± 0.10	± .008	4 PLACES	± --	± .004	DATE: CHECKED: <b>Topmoon</b> 2015.8.6	TITLE: Rast 2.5 Wafer
	mm	inch																			
1 PLACE	± 0.30	± --																			
2 PLACES	± 0.20	± .012																			
3 PLACES	± 0.10	± .008																			
4 PLACES	± --	± .004																			
C	ES130617	新增KEY位变化	DATE: DRAWN: <b>Gavin</b> 2015.8.6	DRAWING NO.: <b>251405S</b>																	
B	ES120315	新增KEY位变化	DATE:																		
A	DWG REL																				
REV.	ECO. NO.	DISCRIPTION	ANGULAR ±1°	UNITS mm	SCALE 2:1	SIZE A4	SHEET 2/5	REV. E													

\* See from top side

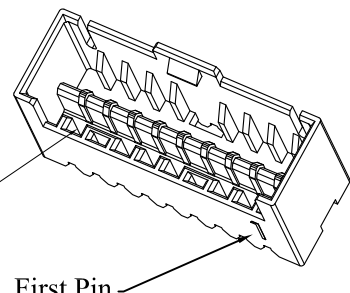
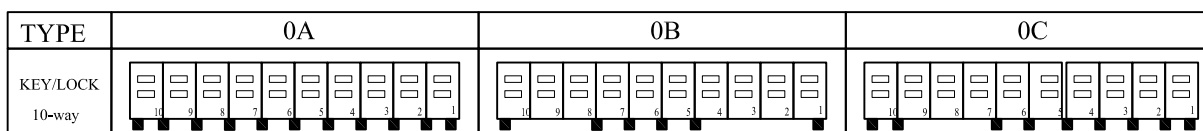
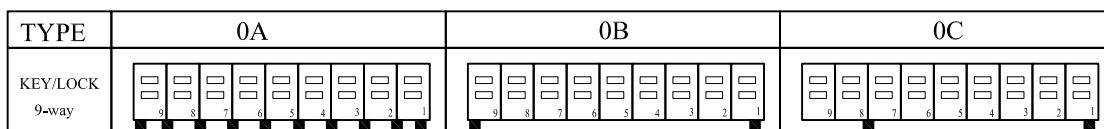


Empty Key



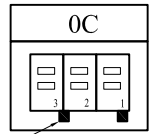
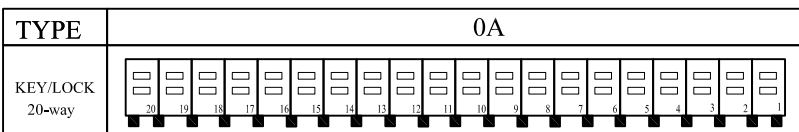
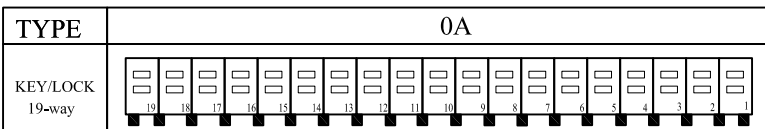
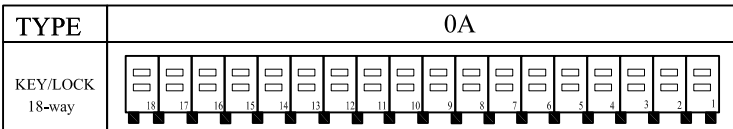
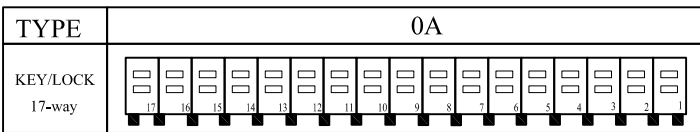
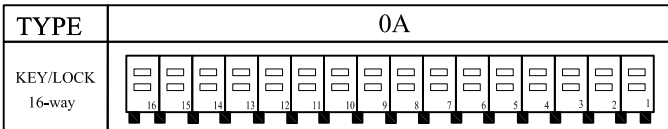
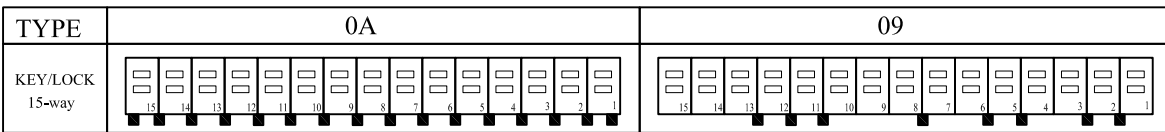
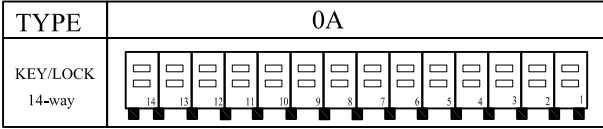
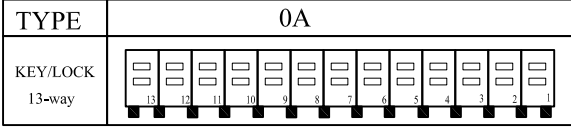
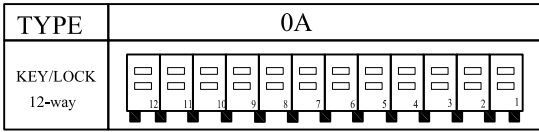
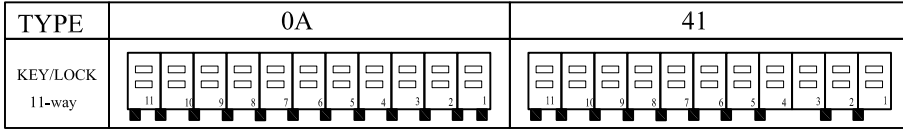
Empty KEY

First Pin

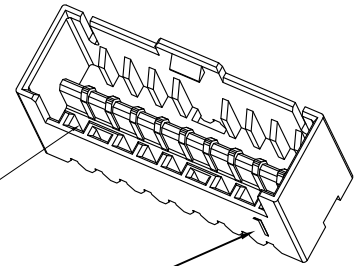


E	ES150807	新增KEY位变化	LEOCO CORPORATION GENERAL TOLERANCES: (UNLESS SPECIFIED)	APPROVED: Chard 2015.8.6	PART NO.: 2514P*****																
D	ES150409	新增KEY位变化		<table border="1"> <tr> <td></td> <td>mm</td> <td>inch</td> </tr> <tr> <td>1 PLACE</td> <td>± 0.30</td> <td>± --</td> </tr> <tr> <td>2 PLACES</td> <td>± 0.20</td> <td>± .012</td> </tr> <tr> <td>3 PLACES</td> <td>± 0.10</td> <td>± .008</td> </tr> <tr> <td>4 PLACES</td> <td>± --</td> <td>± .004</td> </tr> </table>		mm	inch	1 PLACE	± 0.30	± --	2 PLACES	± 0.20	± .012	3 PLACES	± 0.10	± .008	4 PLACES	± --	± .004	CHECKED: Topmoon 2015.8.6	TITLE: Rast 2.5 Wafer
	mm	inch																			
1 PLACE	± 0.30	± --																			
2 PLACES	± 0.20	± .012																			
3 PLACES	± 0.10	± .008																			
4 PLACES	± --	± .004																			
C	ES130617	新增KEY位变化	DATE: 2015.8.6	DRAWN: Gavin 2015.8.6	DRAWING NO.: 251405S																
B	ES120315	新增KEY位变化	DATE: 2015.8.6	UNITS: mm	SCALE: 2:1																
A	DWG REL		ANGULAR ±1°	SIZE: A4	SHEET: 3/5																
REV.	ECO. NO.	DISCRIPTION		mm	SCALE: 2:1																
				mm	SIZE: A4																
				mm	SHEET: 3/5																
				mm	REV.: E																

\* See from top side



Empty Key



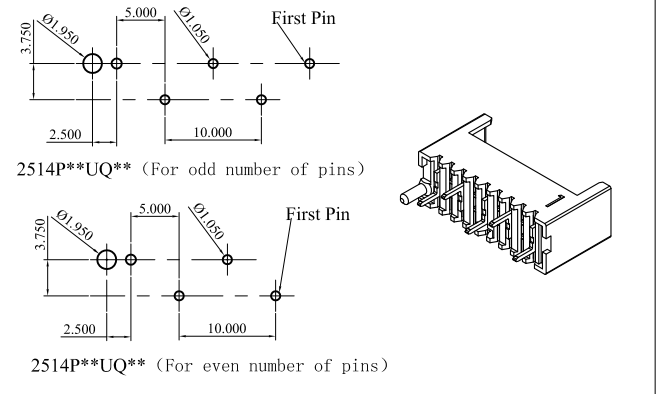
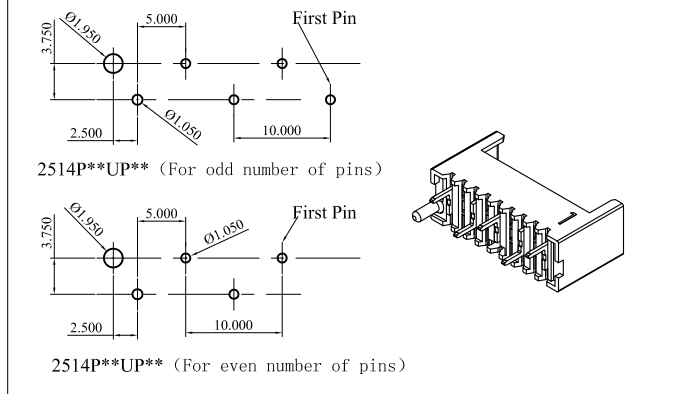
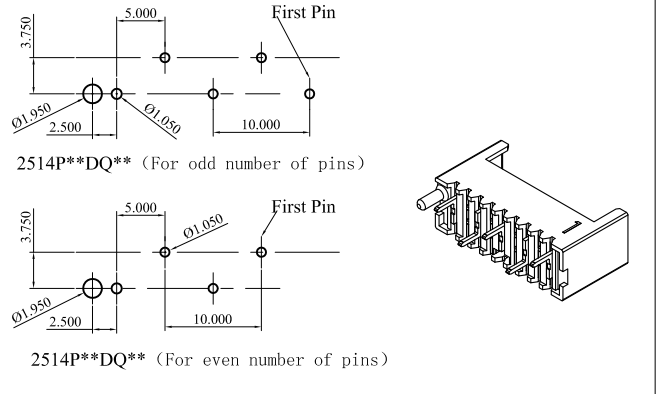
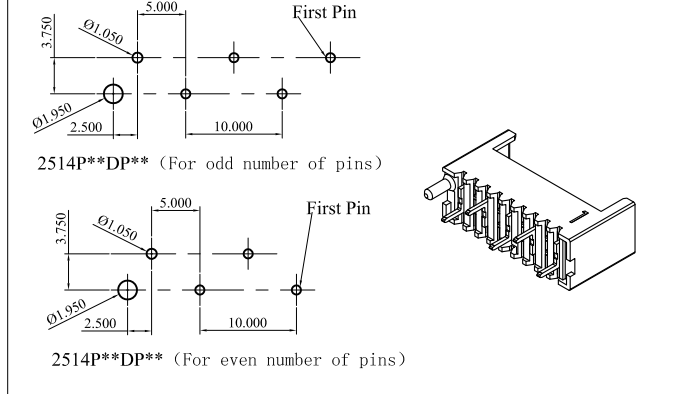
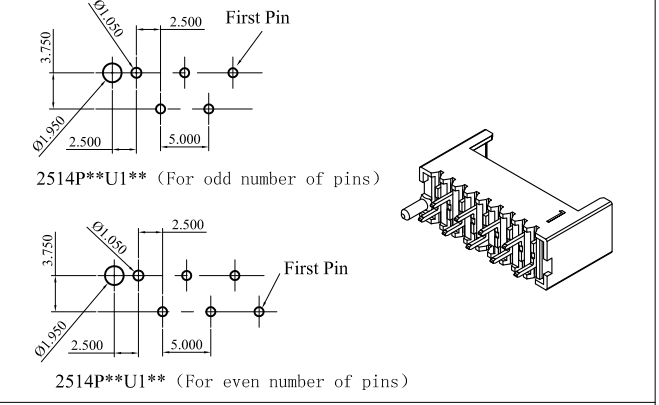
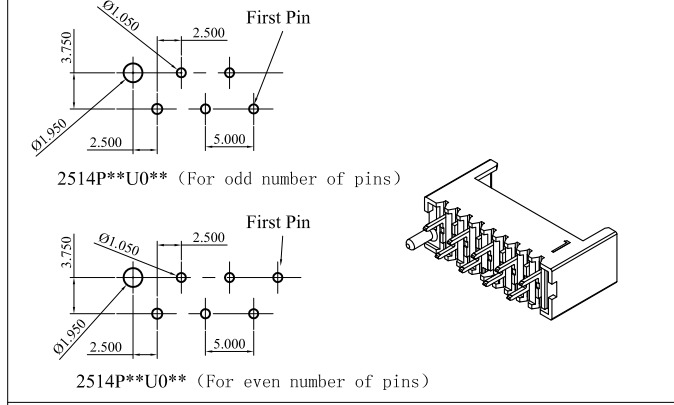
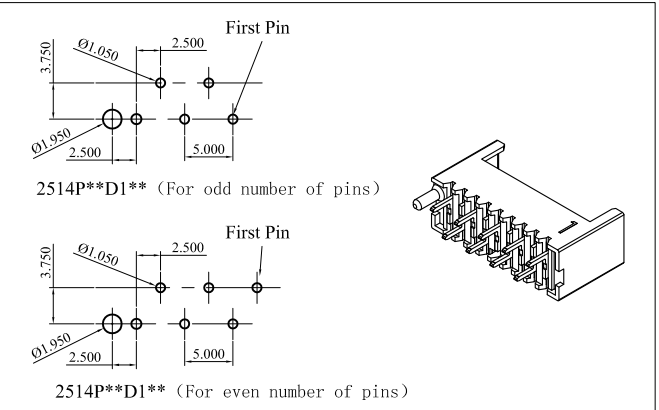
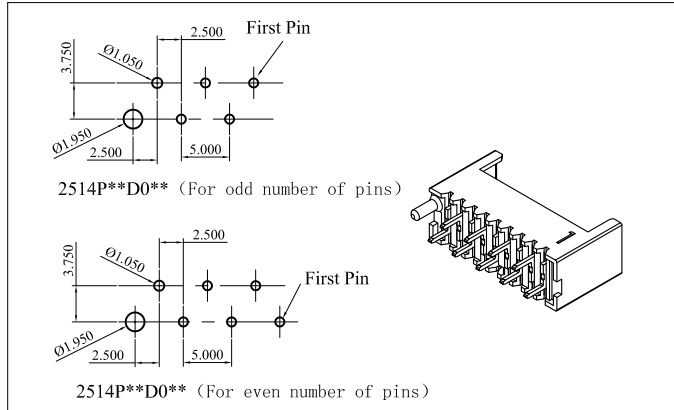
Empty KEY

First Pin

E	ES150807	新增KEY位变化	LECO CORPORATION GENERAL TOLERANCES: (UNLESS SPECIFIED)	APPROVED:	Chard	PART NO.:	2514P*****				
D	ES150409	新增KEY位变化		mm	DATE:	2015.8.6	TITLE:	Rast 2.5 Wafer			
C	ES130617	新增KEY位变化		inch	CHECKED:	Topmoon	DRAWING NO.:	251405S			
B	ES120315	新增KEY位变化		1 PLACE ± 0.30 ± --	DATE:	2015.8.6	UNITS	SCALE	SIZE	SHEET	REV.
A	DWG REL		2 PLACES ± 0.20 ± .012	DRAWN:	Gavin	mm	2:1	A4	4/5	E	
REV.	ECO. NO.	DISCRIPTION	3 PLACES ± 0.10 ± .008	DATE:	2015.8.6						
			4 PLACES ± -- ± .004			ANGULAR ±1°					

Normal PCB layout

Reverse PCB layout



E	ES150807	新增KEY位变化	<b>LECO CORPORATION</b> GENERAL TOLERANCES: (UNLESS SPECIFIED)	APPROVED:	Chard	PART NO.:	2514P*****					
D	ES150409	新增KEY位变化		1 PLACE	DATE:	2015.8.6	TITLE:	Rast 2.5 Wafer				
C	ES130617	新增KEY位变化		2 PLACES	CHECKED:	Topmoon	DRAWING NO.:	251405S				
B	ES120315	新增KEY位变化		3 PLACES	DATE:	2015.8.6	SCALE	2:1	SIZE	A4	SHEET	5/5
A	DWG REL			4 PLACES	DRAWN:	Gavin	REVISION	E				
REV.	ECO. NO.	DISCRIPTION	ANGULAR ±1°			UNITS	mm					