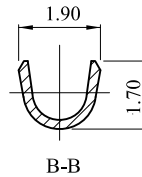
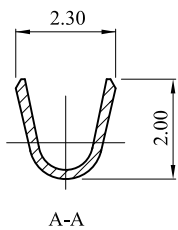
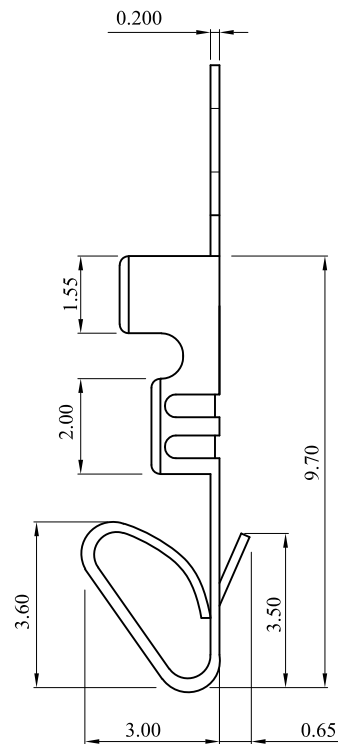
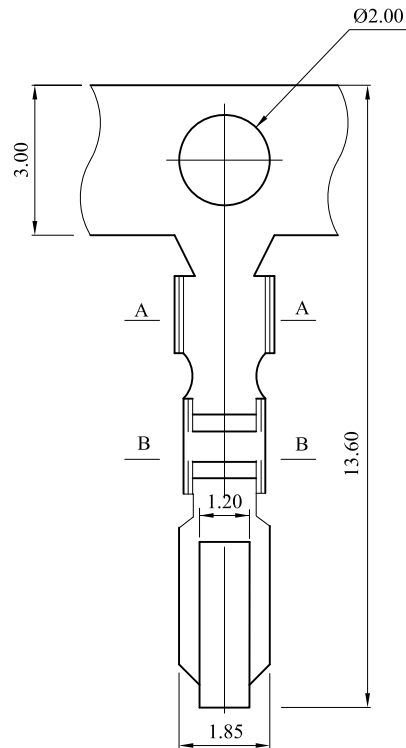


CUSTOMER DRAWING			
REV.	ECO. NO.	DESCRIPTION	DATE
C	DWG. REL.	APPROVED	
D	ES160506		2015.05.05
E	ES220713	Area 4-C: 3.40→3.50 Area 4-B: 1.50→1.55	2022.07.19



Note:

Ordering Information:

2533T * B * 000
1 2

1. Material:

C=Brass;
P=Phosphor Bronze

2. Plating:

U=Gold flash over 30µ" min. Nickel underplating overall
O=Tin plated 120µ" min. over 30µ" min. Nickel underplating overall
F=Selective Gold flash on contact area over 30µ" min. Nickel underplating overall, Tin plated on solder tails

TOLERANCE UNLESS OTHERWISE SPECIFIED			LEOCO CORPORATION http://www.leoco.com.tw		
mm	mm	inch	APPROVED BY:	DATE:	TITLE:
1 PLACE	± 0.30	± ---	Chard	2022.07.19	Crimping Terminal
2 PLACES	± 0.20	± ---	CHECKED BY:	DATE:	
3 PLACES	± 0.10	± ---	Aagel	2022.07.19	PART NO.: 2533T*B*000
4 PLACES	± ---	± ---	DRAWN BY:	DATE:	
ANGULAR ±1°			Janey	2022.07.19	DRAWING NO.: 253301S
SIZE:	A3	SCALE:	1:1	REV.: E	
				SHEET: 1 OF 1	