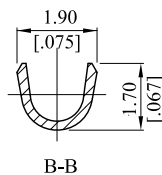
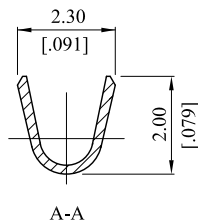
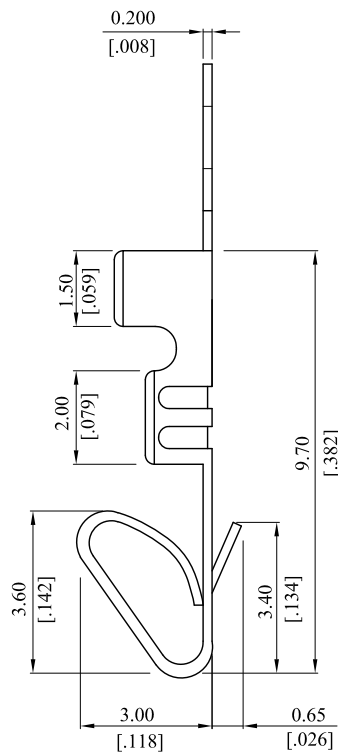
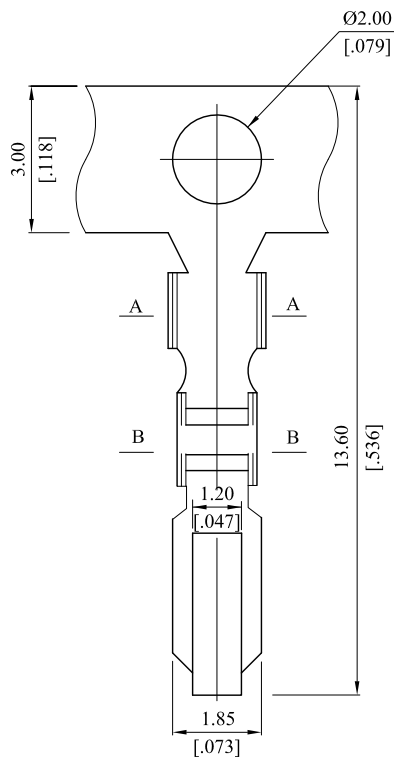


RoHS COMPLIANT

CUSTOMER DRAWING			
REV.	ECO. NO.	DESCRIPTION	DATE
C	DWG. REL.	APPROVED	
D	ES160506		2015.05.05



Note:

Ordering Information:

2533T * B * 000
1 2

1. Material:

C=Brass;

P=Phosphor Bronze

2. Plating:

U=Gold flash over 30μ" min. Nickel underplating overall

O=Tin plated 120μ" min. over 30μ" min. Nickel underplating overall

F=Selective Gold flash on contact area over 30μ" min. Nickel underplating overall, Tin plated on solder tails

TOLERANCE UNLESS OTHERWISE SPECIFIED			LEOCO CORPORATION http://www.leoco.com.tw		
mm			APPROVED BY:	DATE:	TITLE:
[inch]	mm	inch	Chard	2015.05.05	Crimping Terminal
1 PLACE	± 0.30	± ---	CHECKED BY:	DATE:	
2 PLACES	± 0.20	± .012	Angel	2015.05.05	PART NO.: 2533T*B*000
3 PLACES	± 0.10	± .008	DRAWN BY:	DATE:	
4 PLACES	± ---	± .004	Jessi	2015.05.05	DRAWING NO.: 253301S
ANGULAR ±1°			SIZE:	SCALE:	
			A3	1:1	D
					SHEET: 1 OF 1