

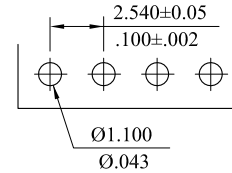
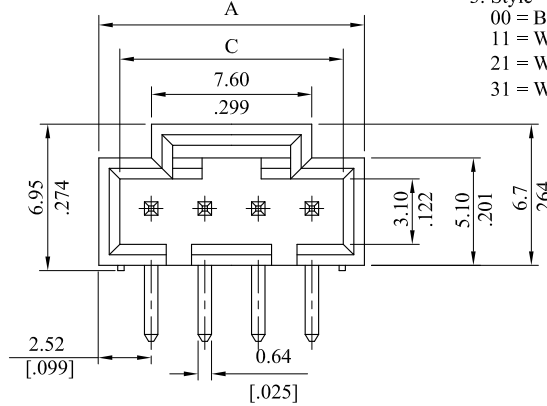
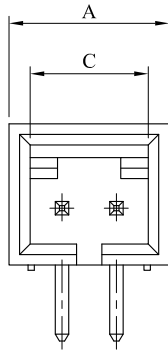
Material :
 * Insulator : PBT+30%GF
 * Contact : Copper alloy

Ordering Information :

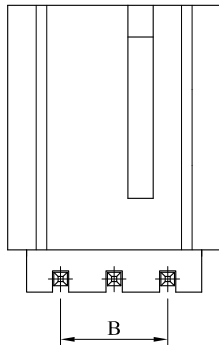
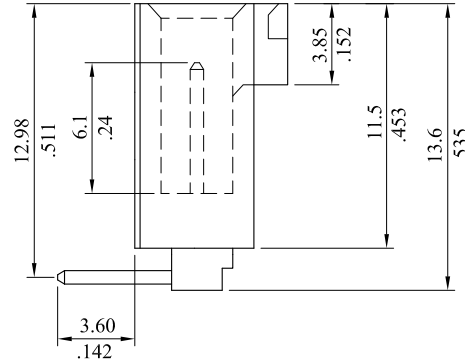
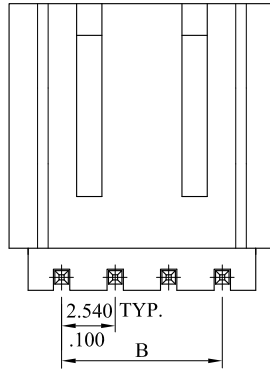
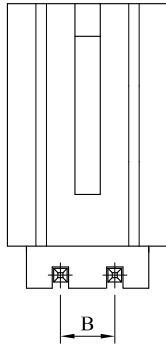
2550P ** H * * *
 1 2 3

RoHS COMPLIANT

- No. of circuits.
- Plating
 T= Tin plated 80~200u". Under plating: Ni 20~100u".
- Style
 00 = Black Base+Copper alloy Pin
 11 = White Base+Copper alloy Pin
 21 = White Base+Phosphor bronze Pin with "x" point
 31 = White Base+Copper alloy Pin with "x" point



Recommended Hole Pattern



Circuits	Dim.A	Dim.B	Dim.C
2	7.59(.299)	2.54(.100)	5.59(.220)
3	10.13(.399)	5.08(.200)	8.13(.320)
4	12.67(.499)	7.62(.300)	10.67(.420)
5	15.21(.599)	10.16(.400)	13.21(.520)
6	17.75(.699)	12.70(.500)	15.75(.620)
7	20.29(.799)	15.24(.600)	18.29(.720)
8	22.83(.899)	17.78(.700)	20.83(.820)
9	25.37(.999)	20.32(.800)	23.37(.920)
10	27.91(1.099)	22.86(.900)	25.91(1.020)
11	30.45(1.199)	25.40(1.000)	28.45(1.120)
12	32.99(1.299)	27.94(1.100)	30.99(1.220)

2	PK*0640158*	PIN	*	Copper alloy, Sn80~200u"			
1	2550B**00*H	BASE	1	PBT+30%GF UL94V-0			
NO.	PARTS NO.	TITLE	Q'TY.	MATERIAL			
I	ES151111	Add P/N for kink Pin	APPROVED: Chard DATE: 2015.11.11				
H	ES140602	Dimension Adjusting	PART NO.: 2550P**H***				
G	ES101242		CHECKED: Topmoon DATE: 2015.11.11				
F	ESO71009		TITLE: 2.54mm(.100") Pitch Shrouded Header				
E	ESO60117		DRAWN: Cedric DATE: 2015.11.11				
REV.	ECO. NO.	DESCRIPTION	UNITS	SCALE	SIZE	SHEET	REV.
			mm inch	4:1	A4	1/1	I
ANGULAR ± (1°)							

LECO CORPORATION

GENERAL TOLERANCES:
(UNLESS SPECIFIED)

	mm	inch
1 PLACE	± 0.30	± --
2 PLACES	± 0.20	± .012
3 PLACES	± 0.10	± .008
4 PLACES	± --	± .004

