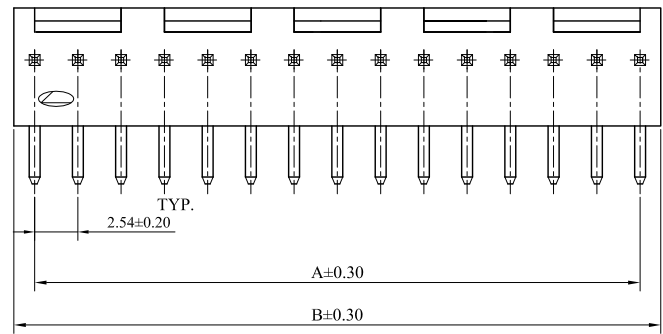


RoHS COMPLIANT

CUSTOMER DRAWING

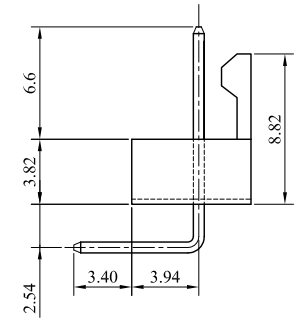
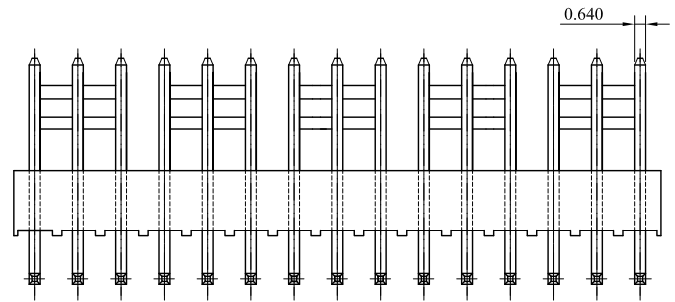
REV.	ECO. NO.	DESCRIPTION	DATE
G	ES121202	Change the depth of base bottom gap	2013.01.09
H	ES160911	Change the drawing frame	2016.09.30
I	ES220712	B2 Area Correct tolerance: 2.540±0.10→2.54±0.20	2022.07.13



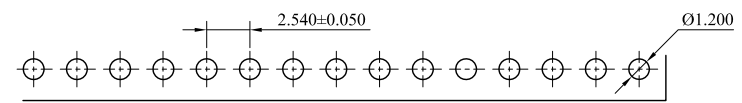
Note:
Material:
Insulator : Nylon 6/6 ,UL 94V-2 Color:Nature
Contact : Brass

Ordering Information:
2571P ** H * 00
I 2
1. No.of circuits
2. Plating:
O= Tin plated 120µ"min. over 30µ" min. Nickel underplating overall
U= Gold flash over 30µ" min. Nickel underplating overall

A=2.54(.100")xNo.of Spaces
B=A+2.54(.100")



circuits	Number of split lock(Order)	circuits	Number of split lock(Order)	circuits	Number of split lock(Order)
2P	1	10P	3(3.3.4)	18P	6(3.3.3.3.3)
3P	1	11P	3(4.3.4)	19P	6(3.3.3.3.4)
4P	1	12P	4(3.3.3.3)	20P	6(4.3.3.3.4)
5P	1	13P	4(3.3.3.4)		
6P	2(3.3)	14P	4(4.3.3.4)		
7P	2(3.4)	15P	5(3.3.3.3.3)		
8P	2(4.4)	16P	5(3.3.3.3.4)		
9P	3(3.3.3)	17P	5(4.3.3.3.4)		



Recommended Hole Pattern

TOLERANCE UNLESS OTHERWISE SPECIFIED			LECO CORPORATION http://www.leoco.com.tw			
mm	mm	inch	APPROVED BY:	DATE:	TITLE:	
[inch]			Chard	2022.07.13	2.54mm(.100")Pitch Right Angle Header	
1 PLACE	± 0.30	± --	CHECKED BY:	DATE:		
2 PLACES	± 0.20	± .012	DRAWN BY:	DATE:	PART NO.:	
3 PLACES	± 0.10	± .008	Aimee	2022.07.13	2571P**H*00	
4 PLACES	± --	± .004	SIZE:	SCALE:	DRAWING NO.:	
ANGULAR ±1°			A3	1:1	REV.:	
					I	
					SHEET:	
					1 OF 1	