

Ordering Information:

2595S \*\*\* 001  
1 2

- No. of circuits
- Plating:

T= Tin plated 120μ " min over 30μ " min. nickel overall

U= Gold flash over 30μ " min. nickel overall

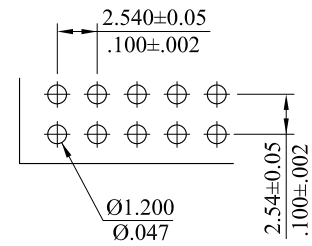
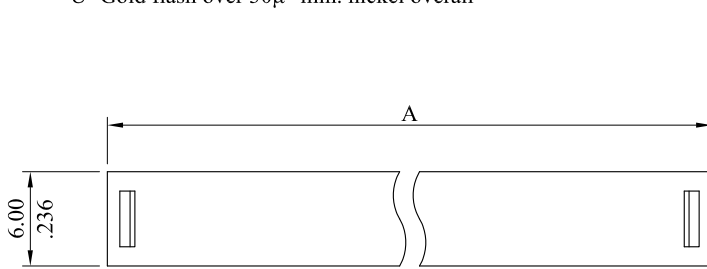
\*\*\* 2595 Series \*\*\*

Material :

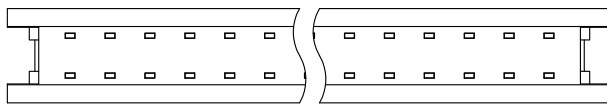
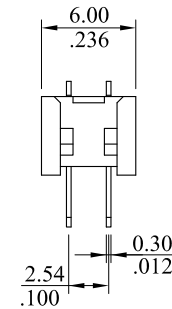
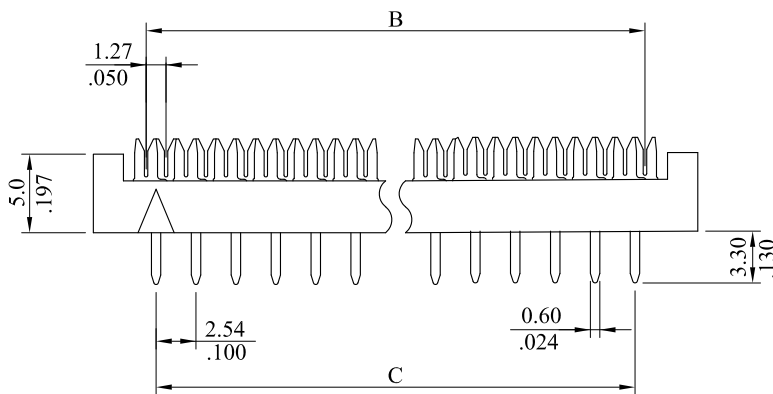
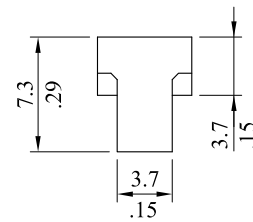
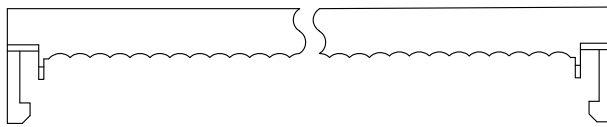
\* Insulator : PBT, UL 94V-0

\* Contact : COPPER ALLOY

RoHS COMPLIANT



Recommended Hole Pattern



Circuits	Dim.A	Dim.B	Dim.C
6	13.07(.515)	6.350(.250)	5.08(.200)
8	15.61(.615)	8.890(.350)	7.62(.300)
10	18.15(.715)	11.430(.450)	10.16(.400)
12	20.69(.815)	13.970(.550)	12.70(.500)
14	23.23(.915)	16.510(.650)	15.24(.600)
16	25.77(1.015)	19.050(.750)	17.78(.700)
18	28.31(1.115)	21.590(.850)	20.32(.800)
20	30.85(1.215)	24.130(.950)	22.86(.900)
24	35.93(1.415)	29.210(1.150)	27.94(1.100)
26	38.47(1.515)	31.750(1.250)	30.48(1.200)
30	43.55(1.715)	36.830(1.450)	35.56(1.400)
34	48.63(1.915)	41.910(1.650)	40.64(1.600)
36	51.17(2.015)	44.450(1.750)	43.18(1.700)
40	56.25(2.215)	49.530(1.950)	48.26(1.900)
50	68.95(2.715)	62.230(2.450)	60.96(2.400)
60	81.65(3.215)	74.930(2.950)	73.66(2.900)
64	86.73(3.415)	80.010(3.150)	78.74(3.100)

H	ES150109	Correct material description wrong: Update Dim. C-3;3.50>3.7;add dim B-3;3.7;delete B-3;2.30	<b>LECO CORPORATION</b>															
G	ES101238																	
F	ES071009																	
E	ES060648																	
D	ES050846																	
REV.	ECO. NO.	DESCRIPTION	<p>GENERAL TOLERANCES: (UNLESS SPECIFIED)</p> <table border="1"> <thead> <tr> <th></th> <th>mm</th> <th>inch</th> </tr> </thead> <tbody> <tr> <td>1 PLACE</td> <td>± 0.30</td> <td>± --</td> </tr> <tr> <td>2 PLACES</td> <td>± 0.20</td> <td>± .012</td> </tr> <tr> <td>3 PLACES</td> <td>± 0.10</td> <td>± .008</td> </tr> <tr> <td>4 PLACES</td> <td>± --</td> <td>± .004</td> </tr> </tbody> </table> <p>ANGULAR ± ( 1° )</p>		mm	inch	1 PLACE	± 0.30	± --	2 PLACES	± 0.20	± .012	3 PLACES	± 0.10	± .008	4 PLACES	± --	± .004
	mm	inch																
1 PLACE	± 0.30	± --																
2 PLACES	± 0.20	± .012																
3 PLACES	± 0.10	± .008																
4 PLACES	± --	± .004																

APPROVED:	PART NO.: 2595S***001				
DATE:	TITLE: 2.54*2.54mm In Line Connector				
CHECKED:	DRAWING NO.: 259502S				
DATE:	SMILE				
DRAWN:	DATE:2015.01.22				
	UNITS	SCALE	SIZE	SHEET	REV.
	mm / inch	~	A4	1/1	H