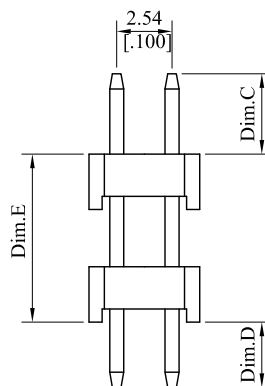
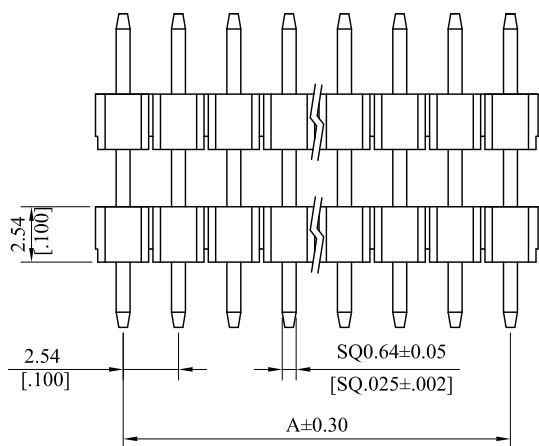
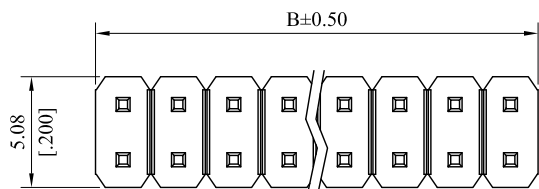


RoHS COMPLIANT

CUSTOMER DRAWING			
REV.	ECO. NO.	DESCRIPTION	DATE
A	DWG REL		
B	ES140318	ADD PIN LENGTH	
C	ES140330	MODIFY PIN LENGTH	
D	ES180323	Material: PBT→PA6T	2018.03.29



Material:  
 Insulator: PA6T, UL94V-0,Black  
 Contact: Brass

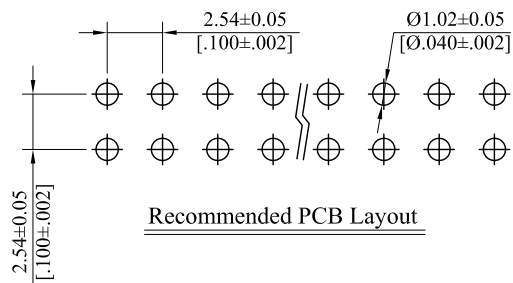
General Part Number:  
 $2666P \frac{**}{1} * \frac{L}{2} **$

- No. of circuits (02~80)
- Plating

T= Tin plated 120µ" min. over 30µ" min. Nickel underplating overall  
 U= Gold flash over 30µ" min. Nickel underplating overall  
 W= 15µ" min. Gold over 30µ" min. Nickel underplating overall  
 Z= 30µ" min. Gold over 30µ" min. Nickel underplating overall  
 F= Selective Gold flash on contact area over 30µ" min. Nickel underplating overall, Tin plated on solder tails  
 J= 15µ" min. Selective Gold on contact area over 30µ" min. Nickel underplating overall, Tin plated on solder tails  
 K= 30µ" min. Selective Gold on contact area over 30µ" min. Nickel underplating overall, Tin plated on solder tails

- Pin Length options:

$A = 2.54mm * \text{No. of spaces}$   
 $B = A + 2.54mm$



TOLERANCE UNLESS OTHERWISE SPECIFIED		LEOCO CORPORATION	
mm	inch	<a href="http://www.leoco.com.tw">http://www.leoco.com.tw</a>	
[inch]	mm	APPROVED BY:	DATE:
1 PLACES	± 0.30	Chard	2018.03.29
2 PLACES	± 0.20	CHECKED BY:	DATE:
3 PLACES	± 0.10	Shirley	2018.03.29
4 PLACES	± --	DRAWN BY:	DATE:
		Spring	2018.03.29
ANGULAR ±1°		SIZE:	SCALE:
		A3	1:1
		TITLE:	
		2.54 Pitch Pin Header	
		PART NO.:	
		2666P***L**	
		DRAWING NO.:	REV.:
		266603S	D
		SHEET:	
		1 OF 2	

RoHS COMPLIANT

CUSTOMER DRAWING

REV.	ECO. NO.	DESCRIPTION	DATE
A	DWG REL		
B	ES140318	ADD PIN LENGTH	
C	ES140330	MODIFY PIN LENGTH	
D	ES180323	Material: PBT→PA6T	2018.03.29

No.	Part No.	Dim.C	Dim.D	Dim.E
1	2666P***L01	9.00(.354)	3.20(.126)	16.80(.661)
2	2666P***L02	3.00(.118)	4.50(.177)	7.10(.280)
3	2666P***L03	8.00(.315)	3.20(.126)	8.50(.335)
4	2666P***L04	5.50(.217)	2.00(.079)	7.00(.276)
5	2666P***L05	7.00(.267)	3.60(.142)	7.40(.291)
6	2666P***L06	6.30(.248)	3.00(.118)	20.7(.815)
7	2666P***L07	3.00(.118)	8.60(.339)	18.20(.717)
8	2666P***L08	2.60(.102)	2.60(.102)	26.80(1.06)
9	2666P***L09	5.80(.228)	3.50(.138)	16.00(.630)
10	2666P***L10	5.80(.228)	3.50(.138)	10.00(.394)
11	2666P***L11	10.00(.394)	10.00(.394)	9.90(.390)
12	2666P***L12	6.00(.236)	4.00(.157)	22.00(.866)
13	2666P***L13	5.40(.213)	4.20(.165)	22.40(.882)
14	2666P***L14	6.26(.246)	5.08(.200)	3.00(.118)
15	2666P***L15	7.00(.276)	3.00(.118)	11.00(.433)
16	2666P***L16	3.05(.120)	2.80(.110)	5.08(.200)
17	2666P***L17	6.30(.248)	3.40(.134)	22.30(.878)
18	2666P***L18	5.50(.217)	2.00(.079)	5.80(.228)
19	2666P***L19	2.80(.110)	2.80(.110)	17.02(.670)
20	2666P***L20	8.00(.315)	5.59(.220)	25.40(1.000)
21	2666P***L21	4.30(.163)	2.54(.100)	6.60(.260)
22	2666P***L22	10.67(.420)	2.80(.110)	12.70(.500)
23	2666P***L23	6.10(.240)	2.80(.110)	11.60(.457)
24	2666P***L24	10.00(.394)	5.00(.197)	33.00(.130)
25	2666P***L25	2.50(.984)	6.00(.236)	7.50(.295)
26	2666P***L26	2.60(.102)	4.50(.177)	20.30(.787)
27	2666P***L27	7.37(.290)	15.88(.625)	2.79(.110)
28	2666P***L28	8.13(.320)	3.15(.124)	19.20(.756)
29	2666P***L29	2.80(.110)	2.80(.110)	18.40(.724)
30	2666P***L30	8.00(.315)	3.39(.133)	20.96(.825)
31	2666P***L31	8.00(.315)	3.39(.133)	9.30(.366)
32	2666P***L32	3.00(.118)	6.00(.236)	6.50(.256)
33	2666P***L33	3.05(.120)	5.67(.223)	6.28(.247)
34	2666P***L34	5.00(.197)	5.00(.197)	5.00(.197)

No.	Part No.	Dim.C	Dim.D	Dim.E
35	2666P***L35	7.70(.303)	3.50(.138)	19.70(.773)
36	2666P***L36	12.70(.500)	3.18(.125)	25.40(1.00)
37	2666P***L37	3.50(.138)	8.50(.335)	5.80(.228)
38	2666P***L38	7.90(.311)	2.60(.102)	9.00(.354)
39	2666P***L39	7.50(.295)	2.60(.102)	18.20(.716)
40	2666P***L40	8.13(.320)	2.79(.109)	17.78(.700)
41	2666P***L41	6.00(.236)	3.30(.130)	14.00(.551)
42	2666P***L42	8.50(.335)	3.00(.118)	10.40(.409)
43	2666P***L43	6.00(.236)	3.00(.118)	13.00(.512)
44	2666P***L44	2.54(.100)	5.08(.200)	24.38(.960)
45	2666P***L45	5.08(.200)	2.54(.100)	33.00(1.300)
46	2666P***L46	8.46(.333)	8.46(.333)	10.54(.415)
47	2666P***L47	2.77(.109)	2.77(.109)	12.70(.500)
48	2666P***L48	8.00(.315)	4.00(.157)	28.00(1.102)
49	2666P***L49	4.00(.157)	3.00(.118)	16.00(.630)
50	2666P***L50	4.83(.190)	4.83(.190)	11.43(.450)
51	2666P***L51	6.35(.250)	3.50(.138)	6.35(.250)
52	2666P***L52	9.30(.366)	9.30(.366)	18.50(.728)
53	2666P***L53	8.90(.350)	3.10(.122)	14.50(.571)
54	2666P***L54	10.00(.394)	3.00(.118)	16.00(.630)
55	2666P***L55	6.10(.240)	3.20(.126)	15.70(.618)
56	2666P***L56	6.10(.240)	3.20(.126)	20.70(.815)
57	2666P***L57	6.60(.260)	3.30(.130)	7.80(.307)
58	2666P***L58	3.05(.120)	3.05(.120)	17.40(.685)
59	2666P***L59	5.20(.205)	2.80(.110)	23.24(.915)
60	2666P***L60	6.30(.249)	2.71(.107)	29.64(1.167)
61	2666P***L61	5.72(.225)	2.54(.100)	13.97(.550)
62	2666P***L62	6.00(.236)	3.00(.118)	5.08(.200)
63	2666P***L63	3.00(.118)	3.00(.118)	6.40(.252)
64	2666P***L64	5.08(.200)	2.91(.115)	12.70(.500)
65	2666P***L65	6.00(.236)	3.00(.118)	22.20(.874)
66	2666P***L66	5.90(.232)	2.60(.102)	8.30(.327)
67	2666P***L67	3.00(.118)	7.50(.295)	36.50(1.437)
68	2666P***L68	7.00(.276)	3.00(.118)	15.00(.590)

No.	Part No.	Dim.C	Dim.D	Dim.E
69	2666P***L69	11.00(.433)	3.00(.118)	12.00(.472)
70	2666P***L70	8.38(.330)	10.16(.400)	12.70(.500)
71	2666P***L71	7.00(.276)	7.00(.276)	9.00(.354)
72	2666P***L72	2.70(.106)	11.50(.453)	11.90(.469)
73	2666P***L73	3.00(.118)	11.00(.433)	11.90(.469)
74	2666P***L74	3.50(.138)	3.50(.138)	9.50(.374)
75	2666P***L75	5.86(.231)	3.00(.118)	14.00(.551)
76	2666P***L76	3.00(.118)	6.00(.236)	10.40(.409)
77	2666P***L77	3.30(.130)	6.00(.236)	9.70(.382)
78	2666P***L78	6.35(.250)	3.05(.120)	6.35(.250)
79	2666P***L79	6.05(.238)	2.80(.110)	17.27(.680)
80	2666P***L80	8.50(.335)	3.00(.118)	8.50(.335)
81	2666P***L81	6.60(.260)	3.00(.118)	5.00(.197)
82	2666P***L82	3.00(.118)	6.00(.236)	6.20(.244)
83	2666P***L84	3.00(.118)	4.00(.157)	7.00(.276)
84	2666P***L86	15.0(.590)	6.50(.256)	9.90(.390)
85	2666P***L87	6.00(.236)	2.60(.102)	16.5(.650)
86	2666P***L88	6.00(.236)	3.00(.118)	25.4(1.000)
87	2666P***L89	4.00(.157)	3.00(.118)	5.08(.200)
88	2666P***L90	6.30(.248)	3.00(.118)	18.2(.717)
89	2666P***L91	7.50(.295)	2.54(.100)	17.5(.689)
90	2666P***L93	3.00(.118)	6.00(.236)	38.4(1.512)

TOLERANCE UNLESS OTHERWISE SPECIFIED			 <b>LEOCO CORPORATION</b> <a href="http://www.leoco.com.tw">http://www.leoco.com.tw</a>		
mm			APPROVED BY:	DATE:	TITLE:  2.54 Pitch Pin Header
[inch]	mm	inch	Chard	2018.03.29	
1 PLACES	± 0.30	± --	CHECKED BY:	DATE:	PART NO.: 2666P***L**
2 PLACES	± 0.20	± .012	Shirley	2018.03.29	
3 PLACES	± 0.10	± .008	DRAWN BY:	DATE:	DRAWING NO.: 266603S
4 PLACES	± --	± .004	Spring	2018.03.29	
ANGULAR ±1°			SIZE:	SCALE:	REV.: D
			A3	1:1	
					SHEET: 2 OF 2