

Ordering Information :

3558 P \*\*\*\* \*\*  
1 2 3 4

\*\*\* 3558 Series \*\*\*

RoHS COMPLIANT

Material :

- \* Insulator : Glass filled polyester, UL 94V-0
- \* Contact : Brass

1. No. of circuits

2. Plating :

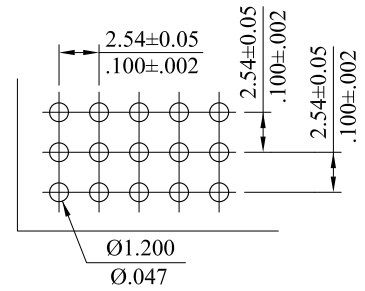
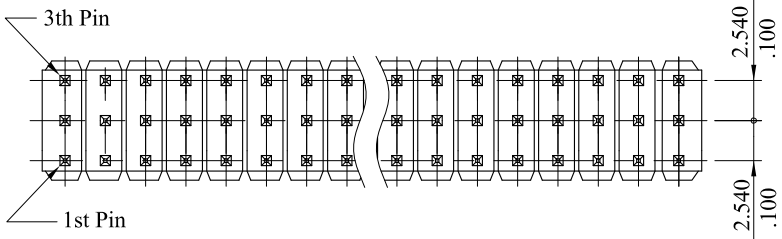
- T= Tin plated 120µ" min over 30µ" min. nickel overall
- U= Gold flash over 30µ" min. nickel overall
- J= 15µ" min. Selective gold on contact area over 30µ" min. nickel overall, Tin plated on solder or other area
- K= 30µ" min. Selective gold on contact area over 30µ" min. nickel overall, Tin plated on solder or other area

3. Options :

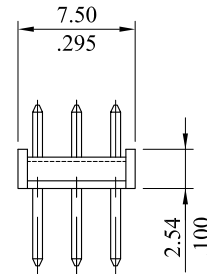
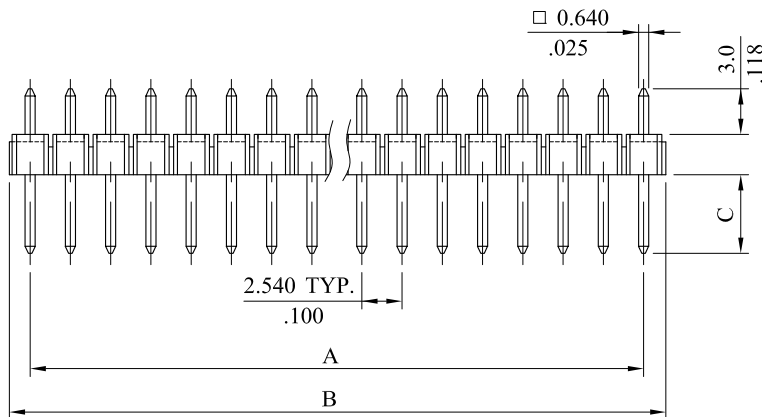
- A: Dim.C=6.26mm    B: Dim.C=7.26mm
- C: Dim.C=8.86mm    D: Dim.C=5.86mm

4. Pin empty options :

- 00= all pin(standed)
- 01= empty 2nd pin



Recommended Hole Pattern



A = 2.54mm(.100") × No. of Spaces  
 B = A + 2.54mm(.100")

				LEOCO CORPORATION	APPROVED:		PART NO.:					
					GENERAL TOLERANCES: (UNLESS SPECIFIED)		DATE:		3558P*****			
D	ES110331			mm	inch	CHECKED:		TITLE:				
C	ES101227					DATE:		HEADER				
B	ES071217			1 PLACE	± 0.30	± --	DRAWN:		DRAWING NO.:			
A	DWG REL			2 PLACES	± 0.20	± .012	DATE:		355803S			
REV.	ECO. NO.	CHG.	APP.	3 PLACES	± 0.10	± .008		UNITS	SCALE	SIZE	SHEET	REV.
				4 PLACES	± --	± .004		$\frac{mm}{inch}$	2:1	A4	1/1	D
				ANGULAR ± ( 1° )								