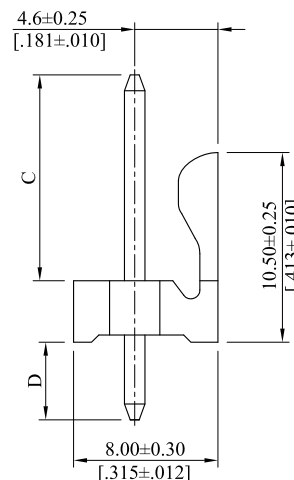
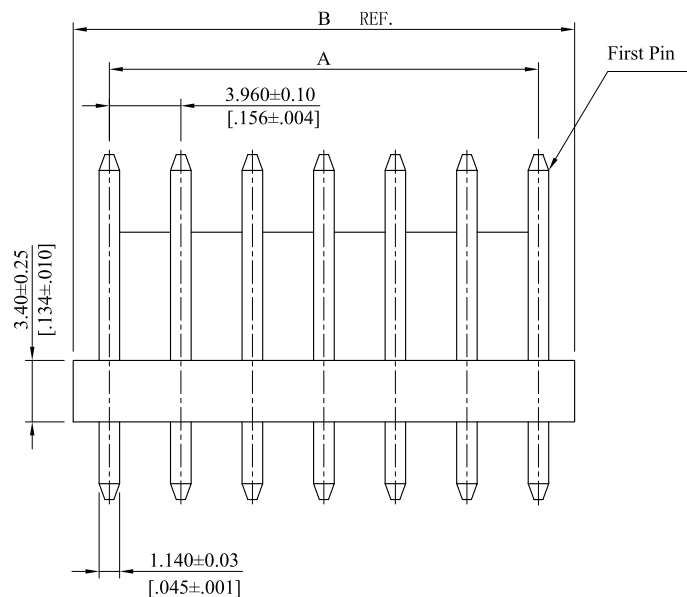


RoHS COMPLIANT

CUSTOMER DRAWING

REV.	ECO. NO.	DESCRIPTION	DATE
B	ES110213		
C	ES180315	Correct A4:1.85→4.6	2018.03.20

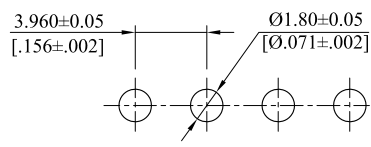


Note:
 Material:
 Insulator: Nylon66, UL94 V-0, Black
 Contact: Brass
 Plating: Tin plated

General Part Number:

3943P ** V ** *
 I 2 3 4

- No. of circuits(02~15)
- Length of Pin
 - 0: Dim.C=10.15mm, Dim.D=3.40mm
 - A: Dim.C=10.15mm, Dim.D=4.00mm
 - B: Dim.C=11.40mm, Dim.D=3.40mm
 - C: Dim.C=7.80mm, Dim.D=3.40mm
 - D: Dim.C=11.40mm, Dim.D=4.30mm
 - E: Dim.C=7.62mm, Dim.D=3.20mm
- Empty Circuits
 - 00: Full Circuits
 - 01: Empty 2nd Pin



PCB LAYOUT

8	27.72±0.20	31.68±0.25	15	55.44±0.30	59.40±0.35
7	23.76±0.20	27.72±0.25	14	51.48±0.25	55.44±0.30
6	19.80±0.15	23.76±0.20	13	47.52±0.25	51.48±0.30
5	15.84±0.15	19.80±0.20	12	43.56±0.25	47.52±0.30
4	11.88±0.15	15.84±0.20	11	39.60±0.25	43.56±0.30
3	7.92±0.10	11.88±0.20	10	35.64±0.25	39.60±0.30
2	3.96±0.10	7.92±0.20	9	31.68±0.20	35.64±0.25
CIRCUITS	DIM. A	DIM. B	CIRCUITS	DIM. A	DIM. B

TOLERANCE UNLESS OTHERWISE SPECIFIED			LEOCO CORPORATION http://www.leoco.com.tw		
mm					
[inch]	mm	inch	APPROVED BY:	DATE:	TITLE:
	± 0.30	± ---	Chard	2018.03.20	3.96mm (.156") Wafer
1 PLACE	± 0.20	± .012	CHECKED BY:	DATE:	
2 PLACES	± 0.10	± .008	Angel	2018.03.20	
3 PLACES	± ---	± .004	DRAWN BY:	DATE:	PART NO.:
4 PLACES			Shirley	2018.03.20	3943P**V***
ANGULAR ±1°			SIZE:	SCALE:	DRAWING NO.:
			A3	1:1	394304S
					REV.:
					C
					SHEET:
					1 OF 1