

*** 3968 H Series ***

RoHS COMPLIANT

Material :

* Insulator : Nylon 6/6 UL94V-0

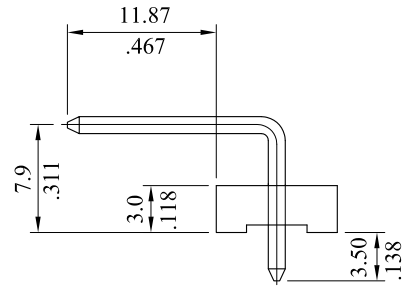
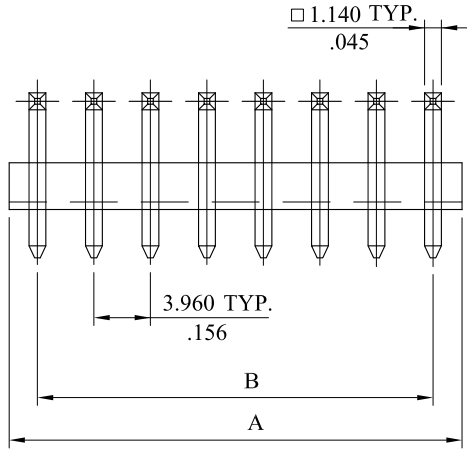
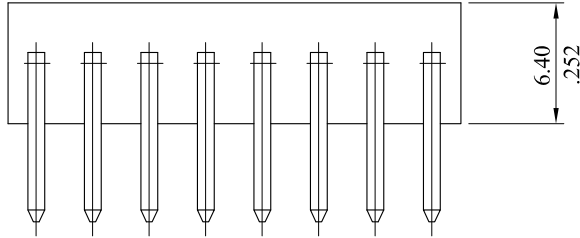
* Contact : Brass

* Plating : Tin plated 120μ” min over 30μ” min. nickel overall

3968P**H000

1

1. No. of circuits



Part No.	DIM. A	DIM. B	Part No.	DIM. A	DIM. B
3968P02H000	7.920(.312)	3.960(.156)	3968P12H000	47.52(1.871)	43.56(1.715)
3968P03H000	11.880(.468)	7.920(.312)	3968P13H000	51.48(2.027)	47.52(1.871)
3968P04H000	15.84(.624)	11.88(.468)	3968P14H000	55.44±0.25(2.183±.010)	51.48(2.027)
3968P05H000	19.80(.780)	15.84(.624)	3968P15H000	59.40±0.25(2.339±.010)	55.44(2.183)
3968P06H000	23.76(.935)	19.80(.780)	3968P16H000	63.36±0.25(2.494±.010)	59.40(2.339)
3968P07H000	27.72(1.091)	23.76(.935)	3968P17H000	67.32±0.30(2.650±.012)	63.36(2.494)
3968P08H000	31.68(1.247)	27.72(1.091)	3968P18H000	71.28±0.30(2.806±.012)	67.32(2.650)
3968P09H000	35.64(1.403)	31.68(1.247)	3968P19H000	75.24±0.30(2.962±.012)	71.28(2.806)
3968P10H000	39.60(1.559)	35.64(1.403)	3968P20H000	79.20±0.30(3.118±.012)	75.24(2.962)
3968P11H000	43.56(1.715)	39.60(1.559)			

				LECO CORPORATION	APPROVED:		PART NO.:					
					GENERAL TOLERANCES: (UNLESS SPECIFIED)		DATE:		3968P**H000			
						CHECKED:		TITLE:				
						DATE:		HEADER				
						DRAWN:		DRAWING NO.:				
						DATE:		396803S				
B	ES101224			1 PLACE	± 0.30	± --		UNITS	SCALE	SIZE	SHEET	REV.
A	DWG REL			2 PLACES	± 0.20	± .012						
				3 PLACES	± 0.10	± .008						
				4 PLACES	± --	± .004						
REV.	ECO. NO.	CHG.	APP.	ANGULAR ± (1°)				$\frac{mm}{inch}$	2:1	A4	1/1	B