

Material:

* Insulator : NYLON 6/6, UL94V-0

* Contact : Brass

* Plating : Tin plated 120µ " min over 30µ " min. nickel overall

3968P $\frac{**}{1} \frac{V}{2} \frac{*}{3} \frac{**}{3}$

RoHS COMPLIANT

1. No. of circuits

2. Pin length options:

0:Dim.C=9.95mm

A:Dim.C=12.90mm

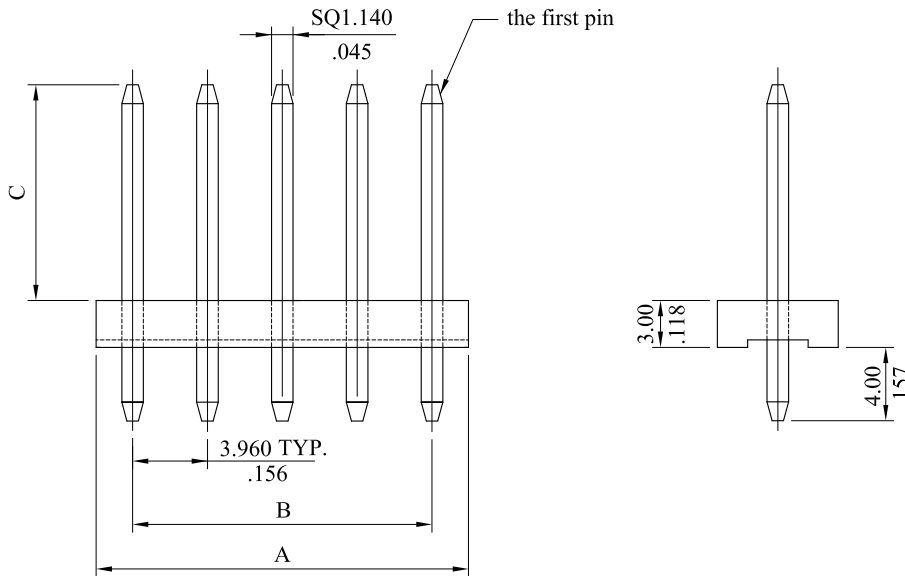
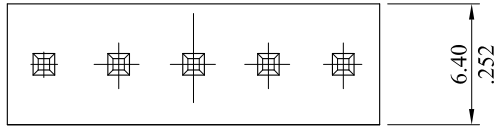
B:Dim.C=22.00mm

P=Empty circuits and Dim.C=9.95mm

3. Special options

00=Standard

01=Empty 2 circuits



Part No.	DIM. A	DIM. B	Part No.	DIM. A	DIM. B
3968P02H000	7.920(.312)	3.960(.156)	3968P12H000	47.5(1.870)	43.56(1.715)
3968P03H000	11.880(.468)	7.920(.312)	3968P13H000	51.5(2.028)	47.52(1.871)
3968P04H000	15.84(.624)	11.88(.468)	3968P14H000	55.4(2.181)	51.48(2.027)
3968P05H000	19.80(.780)	15.84(.624)	3968P15H000	59.4(2.339)	55.44(2.183)
3968P06H000	23.76(.935)	19.80(.780)	3968P16H000	63.4(2.496)	59.40(2.339)
3968P07H000	27.72(1.091)	23.76(.935)	3968P17H000	67.3(2.650)	63.36(2.494)
3968P08H000	31.7(1.248)	27.72(1.091)	3968P18H000	71.3(2.807)	67.32(2.650)
3968P09H000	35.6(1.402)	31.68(1.247)	3968P19H000	75.2(2.961)	71.28(2.806)
3968P10H000	39.6(1.559)	35.64(1.403)	3968P20H000	79.2(3.118)	75.24(2.962)
3968P11H000	43.6(1.717)	39.60(1.559)			

LECO CORPORATION				APPROVED:		PART NO.:																		
				DATE:		3968P**V***																		
GENERAL TOLERANCES: (UNLESS SPECIFIED)				CHECKED:		TITLE:																		
				DATE:		HEADER																		
<table border="1"> <thead> <tr> <th></th> <th>mm</th> <th>inch</th> </tr> </thead> <tbody> <tr> <td>1 PLACE</td> <td>± 0.30</td> <td>± --</td> </tr> <tr> <td>2 PLACES</td> <td>± 0.20</td> <td>± .012</td> </tr> <tr> <td>3 PLACES</td> <td>± 0.10</td> <td>± .008</td> </tr> <tr> <td>4 PLACES</td> <td>± --</td> <td>± .004</td> </tr> </tbody> </table>					mm	inch	1 PLACE	± 0.30	± --	2 PLACES	± 0.20	± .012	3 PLACES	± 0.10	± .008	4 PLACES	± --	± .004	DRAWN:		DRAWING NO.:			
					mm	inch																		
1 PLACE	± 0.30	± --																						
2 PLACES	± 0.20	± .012																						
3 PLACES	± 0.10	± .008																						
4 PLACES	± --	± .004																						
DATE:		396801S																						
REV.	ECO. NO.	CHG.	APP.		UNITS	SCALE	SIZE	SHEET	REV.															
					mm inch	2:1	A4	1/2	C															
				ANGULAR ± (1°)																				

A

A

No.	Empty circuits	No.	Empty circuits	No.	Empty circuits	No.	Empty circuits
01	2	41	2,4,6,8,10,12,14,16	81	2,3,4,5,6,8,10,11,13,15,17,19,21,22,23,25	C1	25,27,28
02	2,4	42	32	82	8,12	C2	1,2,11
03	2,4,6	43	1,14	83	1,2,4,12	C3	2,15
04	3	44	7,10	84	An even number	C4	16
05	2,4,6,8,10,12,14	45	3,6,9	85	Singular	C5	5,12,15
06	2,4,6,8,10,12,14,16,18	46	1,4,7,10	86	7,31	C6	3,5,8
07	3,5,7,9,11	47	7	87	8,32	C7	2,4,6,7,8,10
08	2,4,6,8,10	48	4,6	88	4,5,13,14	C8	2,4,6,7,8,9,10
09	1	49	11	89	4,5,13	C9	7,8,9,10,11,13,15,17,19
10	2,3,5,6	50	2,3,5,6,7	90	3,4,6,7,8,10,12,14,15	D0	
11	4	51	2,5,7	91	2,3,12,13,14	D1	2,3,4,5,6
12	10	52	11,12	92	2,3,4,17,18,19,20,25,26,31,32,34	D2	9,10
13	2,3,4	53	2,5,7,9	93	1,4	D3	3,8,11
14	5	54	4,6,8,10,12	94	2,4,6,9	D4	1,6
15	2,4,6,8,10,12	55	17,18,20,21	95	5,6,7,9,12,13,16,17	D5	6,7,10
16	8	56	3,4	96	21,37	D6	1,6,7,10
17	6	57	1,4,5,7	97	35,37	D7	9,10,13
18	9	58	13	98	25	D8	6,7
19	4,5,8	59	4,7	99	26	D9	2,4,7
20	3,7,11	60	3,6	A0	21	E0	2,4,7,9,11
21	9,16	61	15	A1	1,3,4,6,7,9,16,17,20,22	E1	1,7,10
22	2,4,5	62	12	A2	2,5,7,9,10,11,13,14	E2	5,9
23	2,5	63	3,4,5	A3	2,5,6,7,9,12,13,16,17	E3	4,7,8
24	14	64	3,5,7,8,9	A4	1,2,3,4,6,7,9,16,17,20,22	E4	2,5,7
25	2,5,7,9,10	65	2,4,6,7,9,10,11	A5	2,3,6,7,10,12,13,14	E5	2,3,4, 6
26	2,3,5	66	2,6,8	A6	3,5,8,9,16,18,19,21,22,24	E6	2,4,5, 6
27	2,4,6,8,10,13	67	5,6	A7	3,5,8,9,16,18,19,21,22,23,24	E7	3,5,7, 11
28	2,4,6,8	68	24	A8	27,28	E8	
29	3,5,7,9	69	12,14	A9	10,11,16,17,22,23,24	E9	
30	1,3	70	2,3,4,5	B0	4,17	F0	
31	2,3	71	2,4,5,6,7,8	B1	1,16		
32	2,5,7,9,11	72	2,3,4,5,6,8	B2	4,6,7		
33	5,7	73	2,4,5,6,8,10,12,14,16,17,19,21,22,23,25	B3	4,5,6		
34	4,9	74	18	B4	6,11,14,17,20		
35	2,3,5,6,8,9,11,12	75	3,4,5,6	B5	7,13,16,19,25,30		
36	2,3,4,6,7,8	76	4,5	B6	14,25,27		
37	2,3,4,6,7,8,10,11,12,14,15,16	77	3,5,6	B7	22		
38	11,13	78	4,10	B8	17,18		
39	3,5	79	3,6,10	B9	29		
40	2,3,5,7,9,10,11,13,14	80	20	C0	9,18		

B

B

C


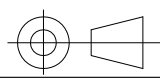
C

D

D

E

E

				 LEOCO CORPORATION			APPROVED:		PART NO.:									
				GENERAL TOLERANCES: (UNLESS SPECIFIED)			DATE:		3968P**V***									
							CHECKED:		TITLE:									
							DATE:		HEADER									
							DRAWN:		DRAWING NO.:									
							DATE:		396801S									
C	ES101224								UNITS		SCALE		SIZE		SHEET		REV.	
B	ES061203								mm		2:1		A4		2/2		C	
A	DWG REL								inch									
REV.	ECO. NO.	CHG.	APP.	ANGULAR ± (1°)														