

Ordering Information:

3969S
 1 2 3

RoHS COMPLIANT

1. No. of circuits (02 through 15)

2. Color:

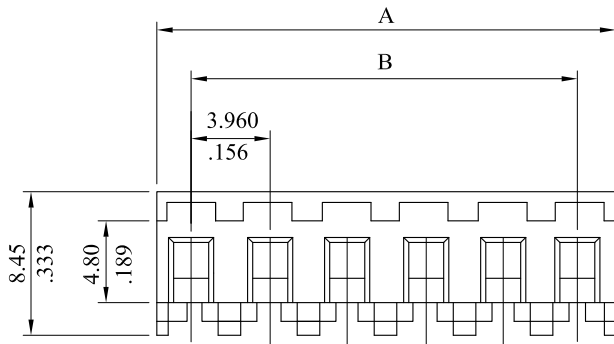
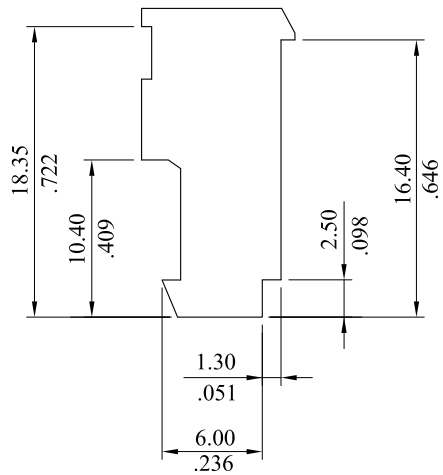
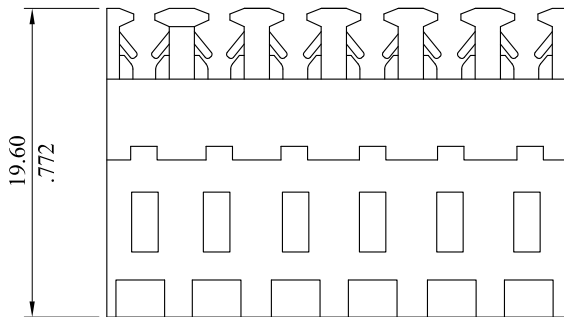
00=White 30=Red
 60=Green 70=Blue

3. Wire Gauge:

18 = 18AWG 20 = 20AWG
 22 = 22AWG 24 = 24AWG 26 = 26AWG

Material:

* Insulator: Nylon 6/6,UL94V-2
 * Contact: Brass



$A = 2.54(.100") \times \text{No. of circuits}$

$B = 2.54(.100") \times \text{No. of spaces}$

E	ES101224			LEOCO CORPORATION	APPROVED:	PART NO.:					
D	ES071039				GENERAL TOLERANCES: (UNLESS SPECIFIED)	DATE:	3969S*****				
C	ES050907			mm		inch	CHECKED:	TITLE:			
B	ES050775			1 PLACE	± 0.30	± --	DATE:	3.96mm CENTER MASS TERMINATED CONNECTORS			
A	DWG REL			2 PLACES	± 0.20	± .012	DRAWN:	DRAWING NO.:			
REV.	ECO. NO.	CHG.	APP.	3 PLACES	± 0.10	± .008	DATE:	396901S			
				4 PLACES	± --	± .004	UNITS mm inch	SCALE	SIZE	SHEET	REV.
				ANGULAR ± (1°)				2:1	A4	1/1	E