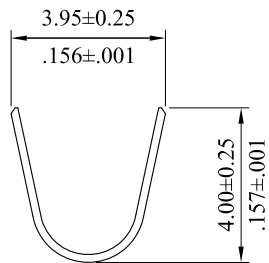
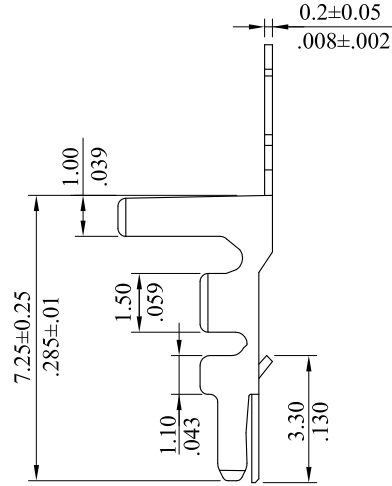
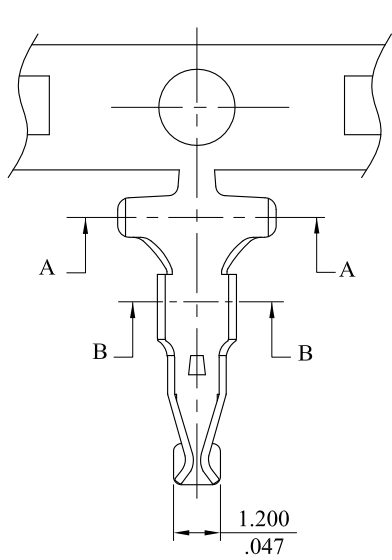
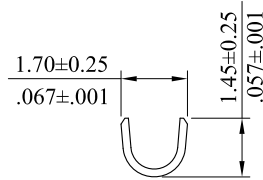


RoHS COMPLIANT

- \* Material : Phosphor Bronze
- \* Wire Ranges : AWG 22~28
- \* Plating : Tin plated 120μ " min over 30μ " min. nickel overall



SEC:A-A



SEC:B-B

				<b>leoco</b> LEOCO CORPORATION		APPROVED:		PART NO.: 4004TPB0000				
				GENERAL TOLERANCES: (UNLESS SPECIFIED)		DATE:		TITLE: TERMINAL				
						CHECKED:		DRAWING NO.: 400401S				
						DATE:						
B	ES101224			1 PLACE	± 0.30	± --	DRAWN:					
A	DWG REL			2 PLACES	± 0.20	± .012	DATE:					
				3 PLACES	± 0.10	± .008	UNITS		SCALE	SIZE	SHEET	REV.
REV.	ECO. NO.	CHG.	APP.	4 PLACES	± --	± .004	mm / inch		5:1	A4	1/1	B
				ANGULAR ± ( 1° )								