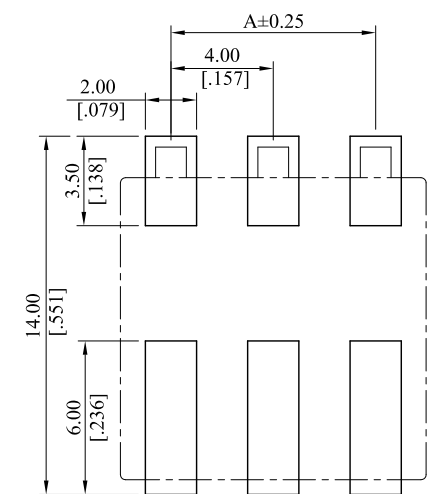
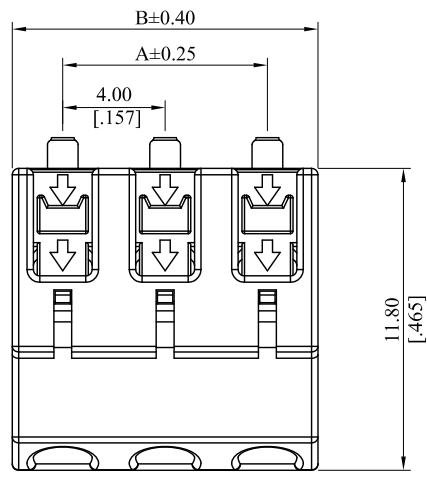


RoHS COMPLIANT

CUSTOMER DRAWING			
REV.	ECO. NO.	DESCRIPTION	DATE
A	DWG.REL	APPROVED	2017.09.11



Recommended P.C.B Layout  
General Tolerance:  $\pm 0.05$

Note:

Material:

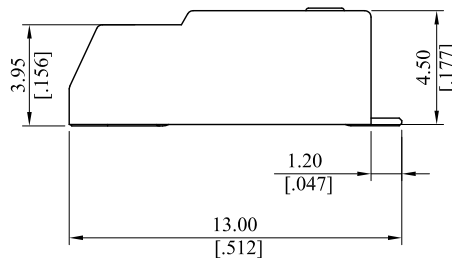
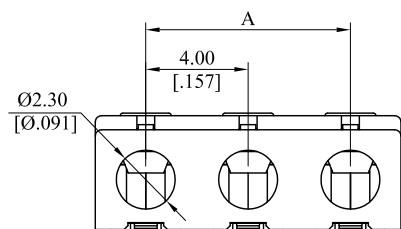
Insulator: High Temperature Thermoplastic, UL94 V-0, Cream  
Contact: Copper Alloy  
Plating: Tin plated over Nickel

General Part Number:

4035P\*\*MT0\*  
1 2

- 1. No. of circuits (1~3)
- 2. 0: Right Angle SMT Type No Push Button
- A: Right Angle SMT Type

A =  $4.00\text{mm} (.157\text{inch}) \times \text{No. of spaces}$   
B =  $A + 3.95\text{mm} (.156\text{inch})$



TOLERANCE UNLESS OTHERWISE SPECIFIED			LEOCO CORPORATION <a href="http://www.leoco.com.tw">http://www.leoco.com.tw</a>		
mm	mm	inch	APPROVED BY:	DATE:	TITLE:
[inch]			Chard	2017.09.11	4.00 Pitch SMT Type Wafer
1 PLACE	$\pm 0.30$	$\pm \text{---}$	CHECKED BY:	DATE:	
2 PLACES	$\pm 0.20$	$\pm .012$	Angel	2017.09.11	PART NO.: 4035P**MT0*
3 PLACES	$\pm 0.10$	$\pm .008$	DRAWN BY:	DATE:	
4 PLACES	$\pm \text{---}$	$\pm .004$	Brian	2017.09.11	DRAWING NO.: 403501S
ANGULAR $\pm 1^\circ$			SIZE:	SCALE:	
			A3	1:1	A
			SHEET: 1 OF 1		