

L-HK ONLY

Note:

- Material: Insulator: See note 2  
Terminal: Copper alloy
- Contact:  
5011TCBTVA\* :  
Tin Plated 120 u" over Ni 30 u" min  
5011TCBSVA\* :  
Silver Plated 80~120 u" over Ni 30 u" min
- Compliant IEC 60695-2-11 and IEC 60335-1  
(750°C ,Flamme<2S)

Ordering Information:

5011P \*\* V \* \*\*  
1 2 3 4

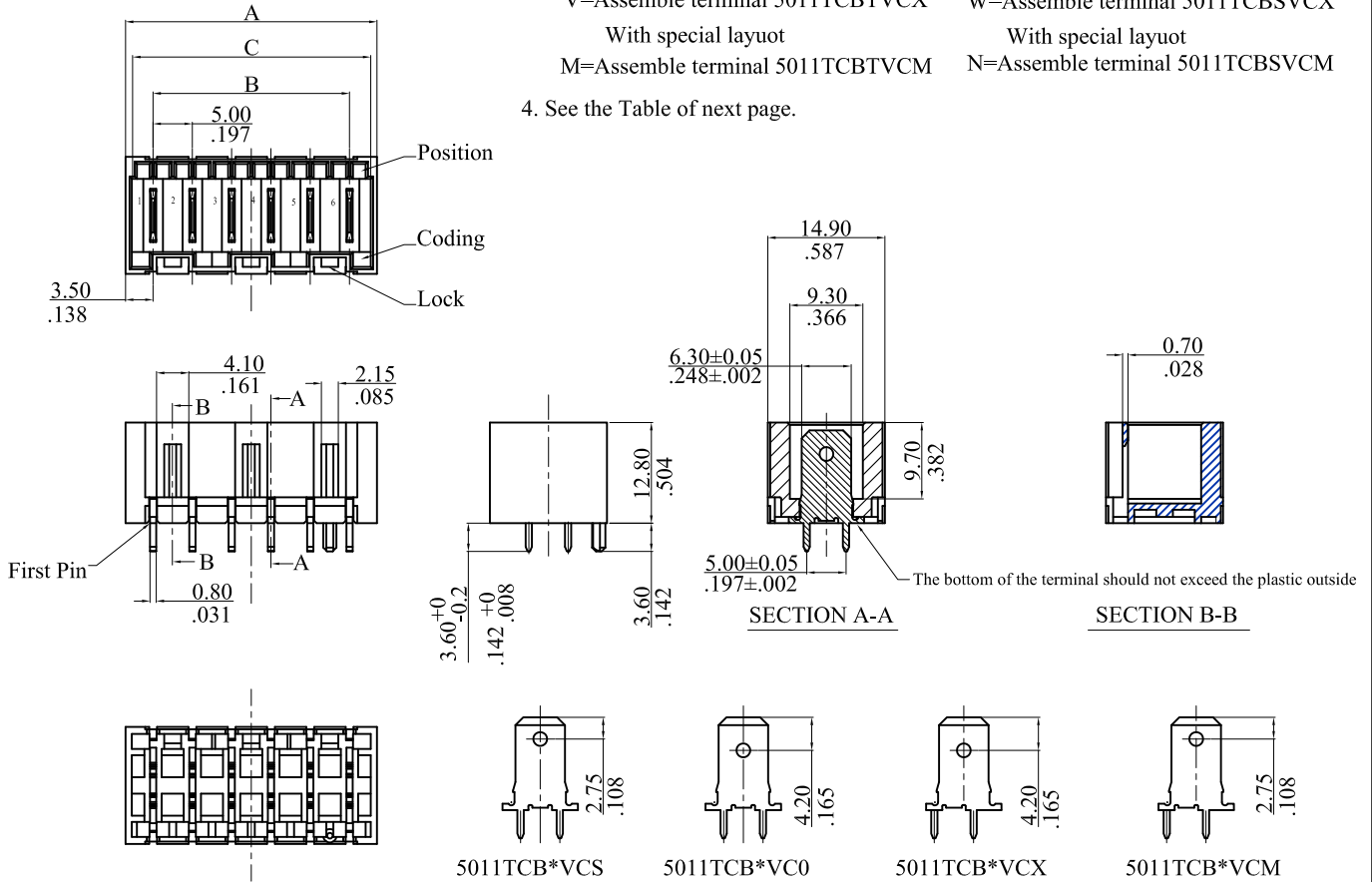
- No. of circuits
- Material for plastic:  
V=Insulator: PA66+30% G/F UL94V-0
- Terminal:  
T=Assemble terminal 5011TCBTVC0  
S=Assemble terminal 5011TCBTVC S  
X=Assemble terminal 5011TCBTVC X  
V=Assemble terminal 5011TCBTVC X  
With special layout  
M=Assemble terminal 5011TCBTVC M

Color: Nature

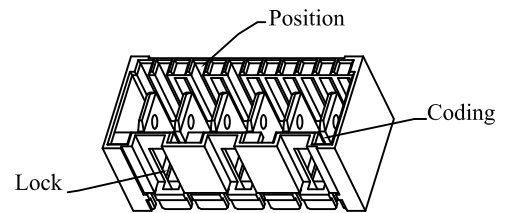
- P=Assemble terminal 5011TCBSVC0  
Q=Assemble terminal 5011TCBSVC S  
Y=Assemble terminal 5011TCBSVC X  
W=Assemble terminal 5011TCBSVC X  
With special layout  
N=Assemble terminal 5011TCBSVC M

4. See the Table of next page.

RoHS COMPLIANT



12	62.0(2.441)	55.0(2.165)	60.2(2.370)
11	57.0(2.244)	50.0(1.969)	55.2(2.173)
10	52.0(2.047)	45.0(1.712)	50.2(1.975)
9	47.0(1.850)	40.0(1.575)	45.2(1.780)
8	42.0(1.654)	35.0(1.378)	40.2(1.583)
7	37.0(1.457)	30.0(1.181)	35.2(1.386)
6	32.0(1.260)	25.0(.984)	30.2(1.189)
5	27.0(1.063)	20.0(.787)	25.2(.992)
4	22.0(.886)	15.0(.591)	20.2(.795)
3	17.0(.669)	10.0(.394)	15.2(.598)
2	12.0(.472)	5.0(.197)	10.2(.402)
CIRCUITS	DIM.A	DIM.B	DIM.C



**leoco** LEOCO CORPORATION

GENERAL TOLERANCES:  
(UNLESS SPECIFIED)

	mm	inch
1 PLACE	± 0.30	± --
2 PLACES	± 0.20	± .012
3 PLACES	± 0.10	± .008
4 PLACES	± --	± .004

ANGULAR ± ( 1° )

APPROVED:

Chard

DATE: 11/25/13

CHECKED:

Topmoon

DATE: 11/25/13

DRAWN:

Chaos

DATE: 11/25/13

PART NO.:

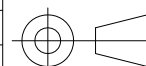
5011P\*\*V\*\*\*

TITLE:

Wafer

DRAWING NO.:

501112S



UNITS  
mm  
inch

SCALE  
1:1

SIZE  
A4

SHEET  
1/5

REV.  
A

REV.	ECO. NO.	DISCRIPTION
A	DWG REL	

L-HK ONLY

RoHS COMPLIANT

\* See from top side

TYPE	0A	0B	0C	0D	0E	0F	0G	0H	0I	0J	0K	0L	0M	0N
KEY/LOCK 2-way														
	0P	0Q	0R	0S	0T	0U	0X	0Z	09	10	11	48	80	86

TYPE	0A	0B	0C	0D	0E	0F	0G	0H	0I	0K	0L
KEY/LOCK 3-way											
	0M	0N	0Q	0W	01	02	03	05	08	10	11
	12	13	1A	2N	2P	32	38	39	40	44	53
	65	80	81	98							

TYPE	0A	0B	0C	0D	0E	0F	0G	0H	0I
KEY/LOCK 4-way									
	0J	0K	0L	0M	0W	01	02	03	04
	05	06	12	17	19	37	43	63	65
	80	81	82	84	86	PA	PB		

			<b>LEOCO CORPORATION</b>		APPROVED: Chard		PART NO.: <b>5011P**V***</b>					
			GENERAL TOLERANCES: (UNLESS SPECIFIED)		DATE: 11/25/13		TITLE: Wafer					
				mm	inch	CHECKED: Topmoon		DRAWING NO.: <b>501112S</b>				
			1 PLACE	± 0.30	± --	DATE: 11/25/13		SCALE				
			2 PLACES	± 0.20	± .012	DRAWN: Chaos		SIZE				
			3 PLACES	± 0.10	± .008	DATE: 11/25/13		SHEET				
			4 PLACES	± --	± .004	UNITS		REV.				
<b>A</b>	DWG REL		ANGULAR ± ( 1° )					mm inch	1:1	A4	2/5	A
REV.	ECO. NO.	DISCRIPTION										

L-HK ONLY

RoHS COMPLIANT

\* See from top side

TYPE	0A	0B	0C	0D	0E	0F	0G	0L
KEY/LOCK 5-way								
	01	02	03	04	05	06	07	08
	09	11	12	13	14	17	18	20
	21	22	23	24	25	26	27	28
	29	30	31	32	33	34	35	36
	43	45	49	50	51	64	69	73
	80	81	82	83	84	85	86	87
	88	PB						

TYPE	0A	0B	0C	0D	0E	0I
KEY/LOCK 6-way						
	04	06	14	15	21	29
	30	50	51	71	73	80
	81					

			<b>LEOCO CORPORATION</b>		APPROVED: Chard		PART NO.: <b>5011P**V***</b>			
			GENERAL TOLERANCES: (UNLESS SPECIFIED)		DATE: 11/25'13		TITLE: <b>Wafer</b>			
					CHECKED: Topmoon					
					DATE: 11/25'13		DRAWING NO.: <b>501112S</b>			
					DRAWN: Chaos					
					DATE: 11/25'13					
<b>A</b>	DWG REL					UNITS	SCALE	SIZE	SHEET	REV.
REV.	ECO. NO.	DISCRIPTION				$\frac{\text{mm}}{\text{inch}}$	1:1	A4	3/5	A
			ANGULAR $\pm (1^\circ)$							

L-HK ONLY

RoHS COMPLIANT

\* See from top side

TYPE	0A	0B	1B	0C	0E	03
KEY/LOCK 7-way						
	04	14	22	23	27	30
	31	32	34	35	38	40
	41	42	43	45	48	51
	59	69	76	80	81	83

TYPE	0A	0C	0D	0E	0F	08
KEY/LOCK 8-way						
	10	16	21	30	33	41
	44	45	46	48	49	57
	58	62	63	77	80	81

TYPE	0A	0B	0C	0D	08
KEY/LOCK 9-way					
	31	42	43	48	49
	52	53	57	58	
	80	81			

LEOCO CORPORATION

GENERAL TOLERANCES:  
(UNLESS SPECIFIED)

	mm	inch
--	----	------

1 PLACE	± 0.30	± --
---------	--------	------

2 PLACES	± 0.20	± .012
----------	--------	--------

3 PLACES	± 0.10	± .008
----------	--------	--------

4 PLACES	± --	± .004
----------	------	--------

ANGULAR ± ( 1° )

APPROVED:

Chard

DATE: 11/25/13

CHECKED:

Topmoon

DATE: 11/25/13

DRAWN:

Chaos

DATE: 11/25/13

PART NO.:

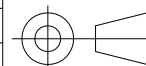
5011P\*\*V\*\*\*

TITLE:

Wafer

DRAWING NO.:

501112S



UNITS

mm  
inch

SCALE

1:1

SIZE

A4

SHEET

4/5

REV.

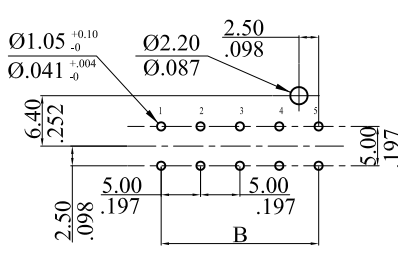
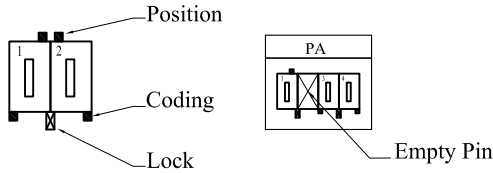
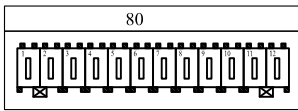
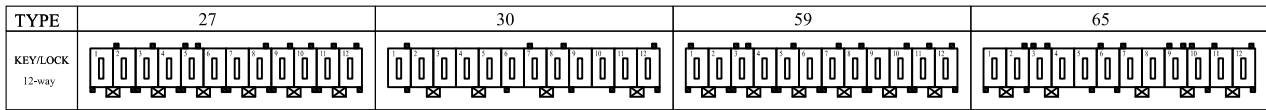
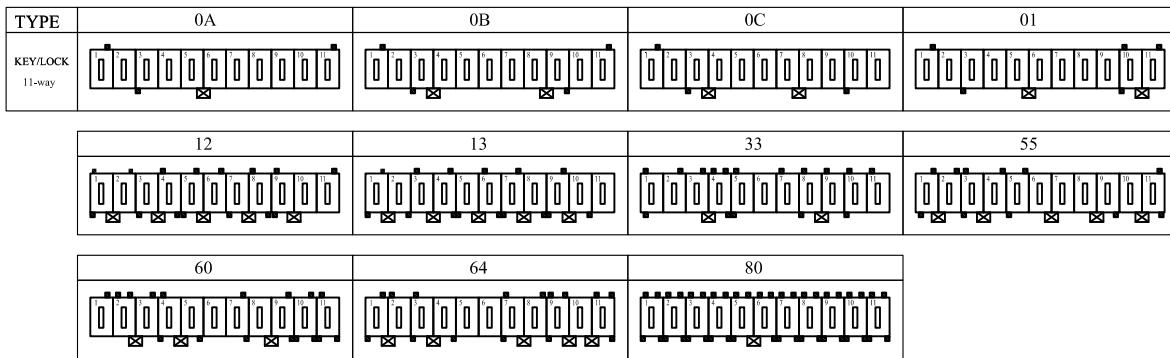
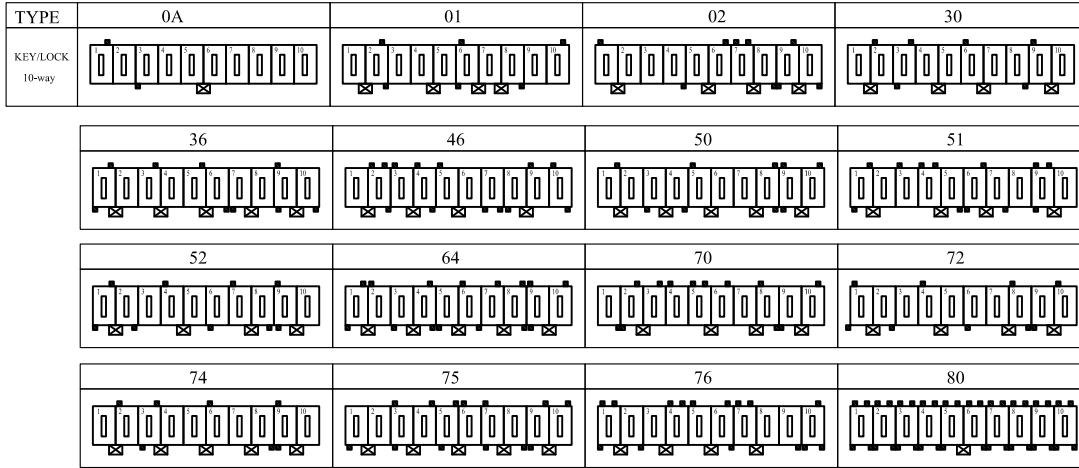
A

A	DWG REL	
REV.	ECO. NO.	DISCRIPTION

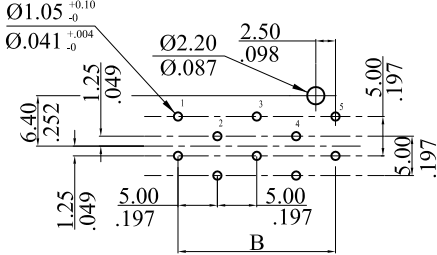
L-HK ONLY

RoHS COMPLIANT

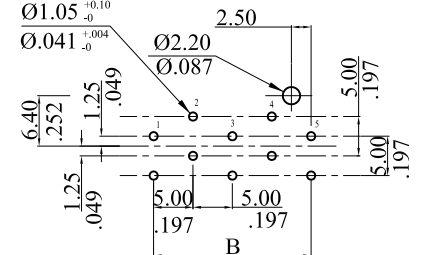
\* See from top side



PCB layout for 5011P\*\*VT(S)\*\*



PCB layout for 5011P\*\*VX(M)\*\*



PCB special layout for 5011P\*\*VV(W)\*\*

LECO CORPORATION		
GENERAL TOLERANCES: (UNLESS SPECIFIED)		
	mm	inch
1 PLACE	± 0.30	± --
2 PLACES	± 0.20	± .012
3 PLACES	± 0.10	± .008
4 PLACES	± --	± .004
ANGULAR ± ( 1° )		

APPROVED:	Chard		PART NO.:			
DATE:	11/25'13		5011P**V***			
CHECKED:	Topmoon		TITLE:			
DATE:	11/25'13		Wafer			
DRAWN:	Chaos		DRAWING NO.:			
DATE:	11/25'13		501112S			
	UNITS	SCALE	SIZE	SHEET	REV.	
	mm inch	1:1	A4	5/5	A	

A	DWG REL	
REV.	ECO. NO.	DISCRIPTION