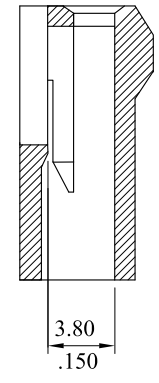
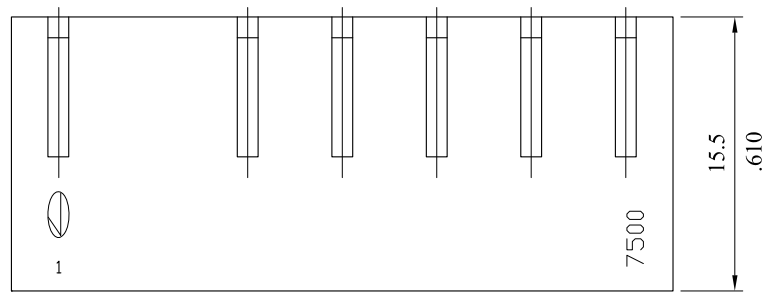
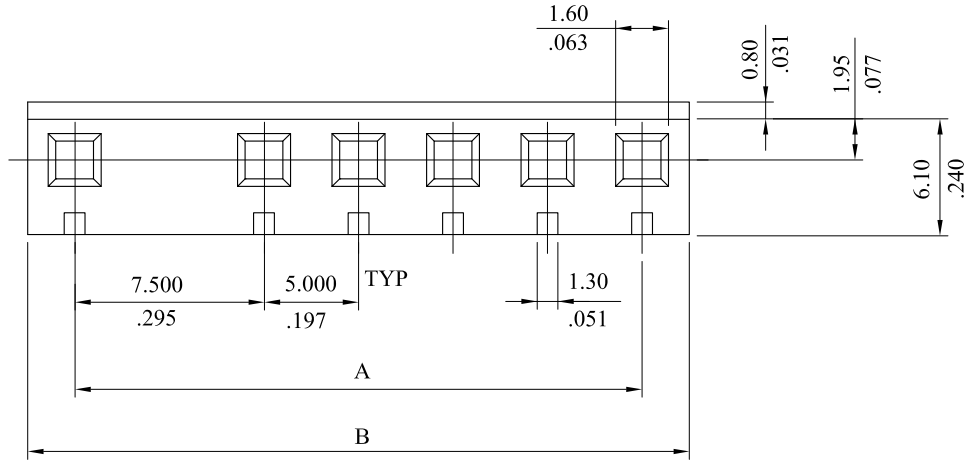


*** 7500 Series ***

Material : UL 94V-0 Nylon 6/6

RoHS COMPLIANT



Circuits	part NO.	Dimension	
		Dim.A	Dim.B
2	7500S020013	7.500(.295)	12.5(.492)
3	7500S030013	12.500(.492)	17.5(.689)
4	7500S040013	17.500(.689)	22.5(.886)
5	7500S050013	22.500(.886)	27.5(1.083)
6	7500S060013	27.500(1.083)	32.5(1.280)
7	7500S070013	32.50(1.280)	37.5(1.476)
8	7500S080013	37.50(1.476)	42.5(1.673)
9	7500S090013	42.50(1.673)	47.5(1.870)
10	7500S100013	47.50(1.871)	52.5(2.067)
11	7500S110013	52.50(2.067)	57.5(2.264)
12	7500S120013	57.5(2.264)	62.5(2.461)
13	7500S130013	62.5(2.461)	67.5(2.657)
14	7500S140013	67.5(2.657)	72.5(2.854)
15	7500S150013	72.5(2.854)	77.5(3.051)
16	7500S160013	77.5(3.051)	82.5(3.248)

LEOCO CORPORATION				APPROVED:		PART NO.:																		
				DATE:		7500S**0013																		
GENERAL TOLERANCES: (UNLESS SPECIFIED)				CHECKED:		TITLE:																		
				DATE:		HOUSING																		
<table border="1"> <thead> <tr> <th></th> <th>mm</th> <th>inch</th> </tr> </thead> <tbody> <tr> <td>1 PLACE</td> <td>± 0.30</td> <td>± --</td> </tr> <tr> <td>2 PLACES</td> <td>± 0.20</td> <td>± .012</td> </tr> <tr> <td>3 PLACES</td> <td>± 0.10</td> <td>± .008</td> </tr> <tr> <td>4 PLACES</td> <td>± --</td> <td>± .004</td> </tr> </tbody> </table>					mm	inch	1 PLACE	± 0.30	± --	2 PLACES	± 0.20	± .012	3 PLACES	± 0.10	± .008	4 PLACES	± --	± .004	DRAWN:		DRAWING NO.:			
					mm	inch																		
1 PLACE	± 0.30	± --																						
2 PLACES	± 0.20	± .012																						
3 PLACES	± 0.10	± .008																						
4 PLACES	± --	± .004																						
DATE:		750001S																						
REV.	ECO. NO.	CHG.	APP.		UNITS	SCALE	SIZE	SHEET	REV.															
					mm/inch	2:1	A4	1/1	C															
				ANGULAR ± (1°)																				