

\*\*\* 7502 Series \*\*\*

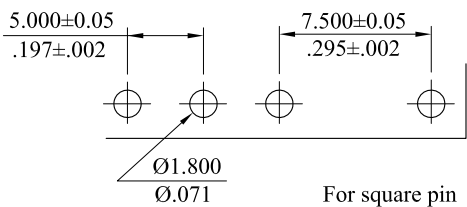
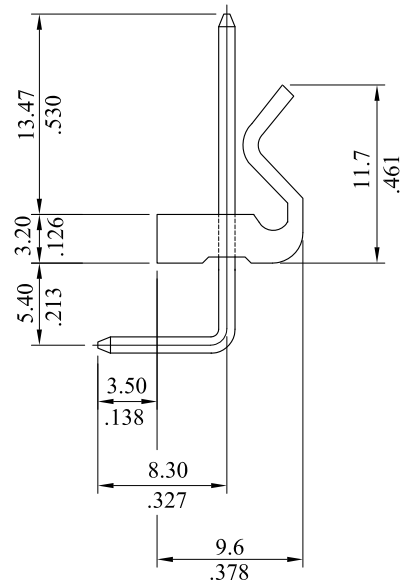
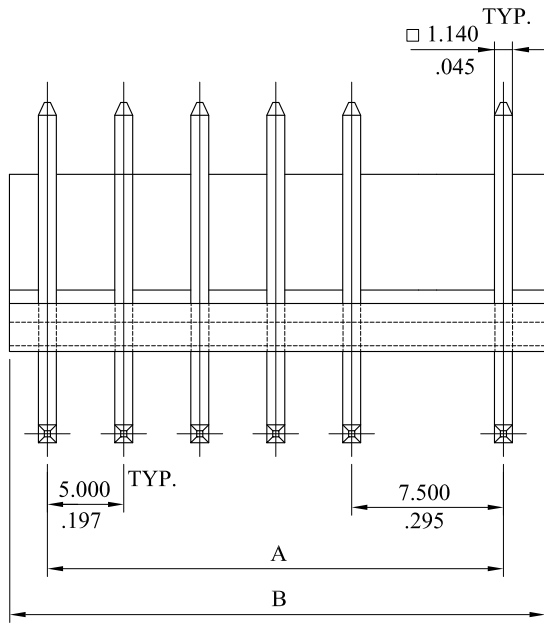
Material :

\* Insulator : Nylon 6/6., UL 94V-0

\* Contact : Brass

\* Plating : Tin plated 120μ" min over 30μ" min. nickel overall

RoHS COMPLIANT



Recommended hole pattern

CIRCUITS	PART NO.	DIMENSION	
		SQUARE PIN	A
2	7502P020013	7.50(.295)	12.5(.492)
3	7502P030013	12.50(.492)	17.5(.689)
4	7502P040013	17.50(.689)	22.5(.886)
5	7502P050013	22.50(.886)	27.5(1.083)
6	7502P060013	27.50(1.083)	32.5(1.280)
7	7502P070013	32.50(1.280)	37.5(1.476)
8	7502P080013	37.50(1.476)	42.5(1.673)
9	7502P090013	42.50(1.673)	47.5(1.870)
10	7502P100013	47.50(1.870)	52.5(2.067)
11	7502P110013	52.5(2.067)	57.5(2.264)
12	7502P120013	57.5(2.264)	62.5(2.461)
13	7502P130013	62.5(2.461)	67.5(2.657)
14	7502P140013	67.5(2.657)	72.5(2.854)
15	7502P150013	72.5(2.854)	77.5(3.051)

				LEOCO CORPORATION	APPROVED:		PART NO.:					
					GENERAL TOLERANCES: (UNLESS SPECIFIED)		DATE:		7502P**0013			
C	ES101238				mm	inch	CHECKED:		TITLE:			
B	ES071028			1 PLACE	± 0.30	± --	DATE:		HEADER			
A	DWG REL			2 PLACES	± 0.20	± .012	DRAWN:		DRAWING NO.:			
REV.	ECO. NO.	CHG.	APP.	3 PLACES	± 0.10	± .008	DATE:		750201S			
				4 PLACES	± --	± .004		UNITS	SCALE	SIZE	SHEET	REV.
				ANGULAR ± ( 1° )		mm inch		2:1	A4	1/1	C	