

*** 7556 Series ***

Material :

* Insulator : Thermoplastic UL 94V-0

* Contact : Brass

* Plating : Tin Plated 120u" min. Over 30u" min . Nickel Overall.

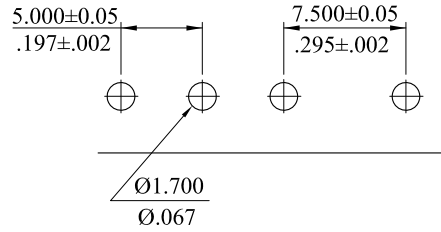
RoHS COMPLIANT

7556P ** 00 01
 1 2 3

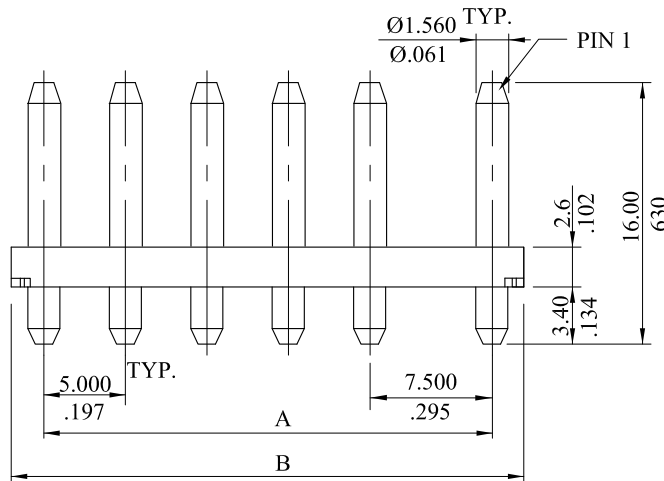
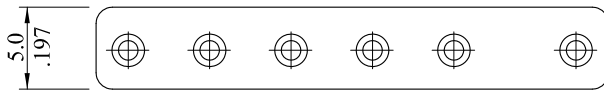
1. Series No.

2. No. of circuits

3. Color: 01=Black



Recommended Hole Pattern



CIRCUITS	PART NO.	A	B
2	7556P**0001	7.500 (.295)	11.5 (.453)
3	7556P**0001	12.500 (.492)	16.5 (.650)
4	7556P**0001	17.500 (.689)	21.5 (.846)
5	7556P**0001	22.500 (.886)	26.5 (1.043)
6	7556P**0001	27.500 (1.083)	31.5 (1.240)

F	ES120924			LECO CORPORATION GENERAL TOLERANCES: (UNLESS SPECIFIED) <table border="1"> <thead> <tr> <th></th> <th>mm</th> <th>inch</th> </tr> </thead> <tbody> <tr> <td>1 PLACE</td> <td>± 0.30</td> <td>± ---</td> </tr> <tr> <td>2 PLACES</td> <td>± 0.20</td> <td>± .012</td> </tr> <tr> <td>3 PLACES</td> <td>± 0.10</td> <td>± .008</td> </tr> <tr> <td>4 PLACES</td> <td>± ---</td> <td>± .004</td> </tr> </tbody> </table> ANGULAR ± (1°)		mm	inch	1 PLACE	± 0.30	± ---	2 PLACES	± 0.20	± .012	3 PLACES	± 0.10	± .008	4 PLACES	± ---	± .004	APPROVED:	PART NO.:			
	mm	inch																						
1 PLACE	± 0.30	± ---																						
2 PLACES	± 0.20	± .012																						
3 PLACES	± 0.10	± .008																						
4 PLACES	± ---	± .004																						
E	ES101211			DATE:	CHARD	7556P**0001																		
D	ES070803			CHECKED:	ANGEL	TITLE:																		
C	ES031004			DATE:		HEADER																		
B	ES020149			DRAWN:	RICE	DRAWING NO.:																		
REV.	ECO. NO.	CHG.	APP.	DATE:	12.09.26	755603S																		
						UNITS	SCALE	SIZE	SHEET	REV.														
						mm inch	2:1	A4	1/1	F														