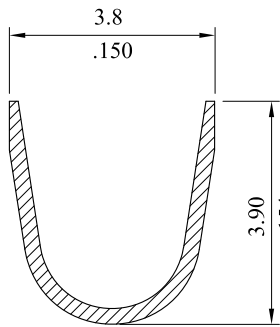
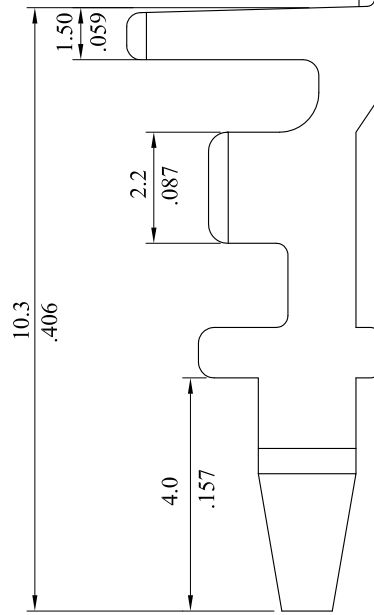
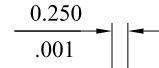
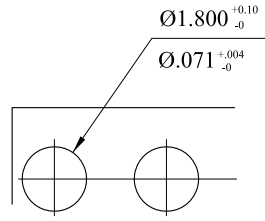
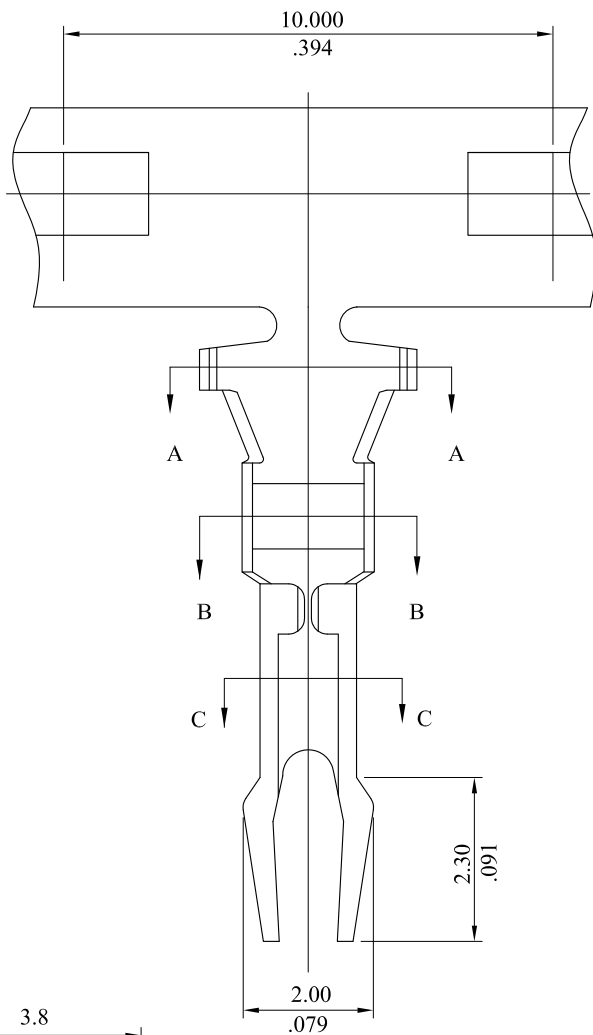


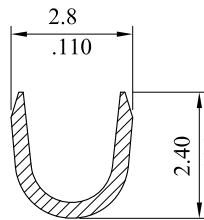
Notes:

- 1. Material : Phosphor Bronze
- 2. Plating : Tin plated

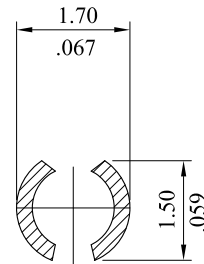
RoHS COMPLIANT



SECTION A-A



SECTION B-B



SECTION C-C

				leoco LEOCO CORPORATION		APPROVED:		PART NO.: 9193TPBOV1A				
				GENERAL TOLERANCES: (UNLESS SPECIFIED)		DATE:		TITLE: TERMINAL				
						CHECKED:						
C	ES101204					DATE:		DRAWING NO.: 919301S				
B	ES080369					DRAWN:						
A	DWG REL					DATE:						
REV.	ECO. NO.	CHG.	APP.			DATE:		UNITS	SCALE	SIZE	SHEET	REV.
						ANGULAR $\pm (1^\circ)$		$\frac{\text{mm}}{\text{inch}}$	6:1	A4	1/1	C