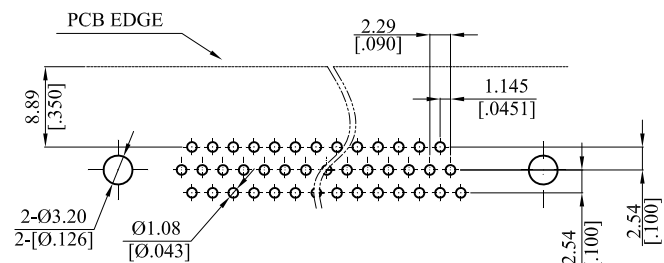
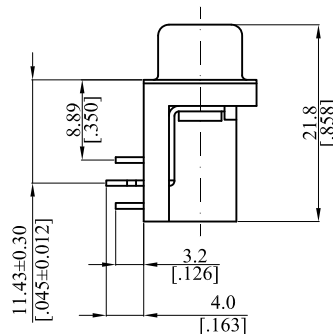
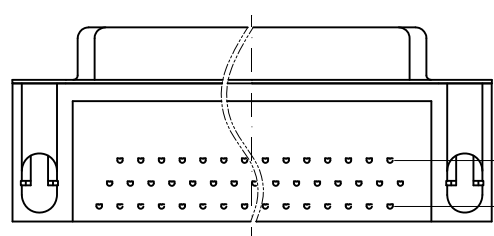
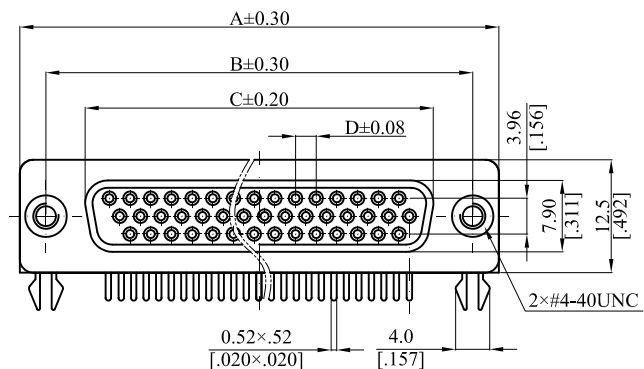


RoHS COMPLIANT

CUSTOMER DRAWING			
REV	ECO. NO.	DESCRIPTION	DATE
A	DWG. REL.	APPROVED	2017.03.30



Recommended P.C.B Layout
 General Tolerance ± 0.05

Note:
 Material:
 Insulator: PBT, UL94V-0, Black;
 Contact: Copper Alloy;
 Shell: SPCC—SD.

Ordering Information:

DHSL—***RL2
 1 2

1. No. of circuits

15=15p

26=26p

44=44p

62=62p

2. Plating:

F=Selective Gold flash on contact area over
 30 μ "min. Nickel underplating overall, Tin
 plated on solder tails.

No. of circuits	Dim A	Dim B	Dim C	Dim D
15	30.80(1.213)	25.00(.984)	16.30(.064)	2.29(.090)
26	39.20(1.543)	33.33(1.312)	24.60(.969)	2.29(.090)
44	53.00(2.087)	47.00(1.850)	38.35(1.510)	2.29(.090)
62	69.40(2.732)	63.50(2.500)	54.90(2.161)	2.41(.095)

TOLERANCE UNLESS OTHERWISE SPECIFIED

	mm	inch
1 PLACE	± 0.30	$\pm \text{---}$
2 PLACES	± 0.20	$\pm .012$
3 PLACES	± 0.10	$\pm .008$
4 PLACES	$\pm \text{---}$	$\pm .004$



LECO CORPORATION

<http://www.leoco.com.tw>

APPROVED BY: Chard
 DATE: 2017.04.01

CHECKED BY: Angel
 DATE:

DRAWN BY: Kaka
 DATE: 2017.03.30

TITLE:
 High Density D—SUB
 Reseplacle

PART NO.:
 DHSL—***RL2

SIZE: A3
 SCALE: 1:1



DRAWING NO.: DHSL07S
 REV.: A
 SHEET: 1 OF 1

ANGULAR $\pm 1^\circ$